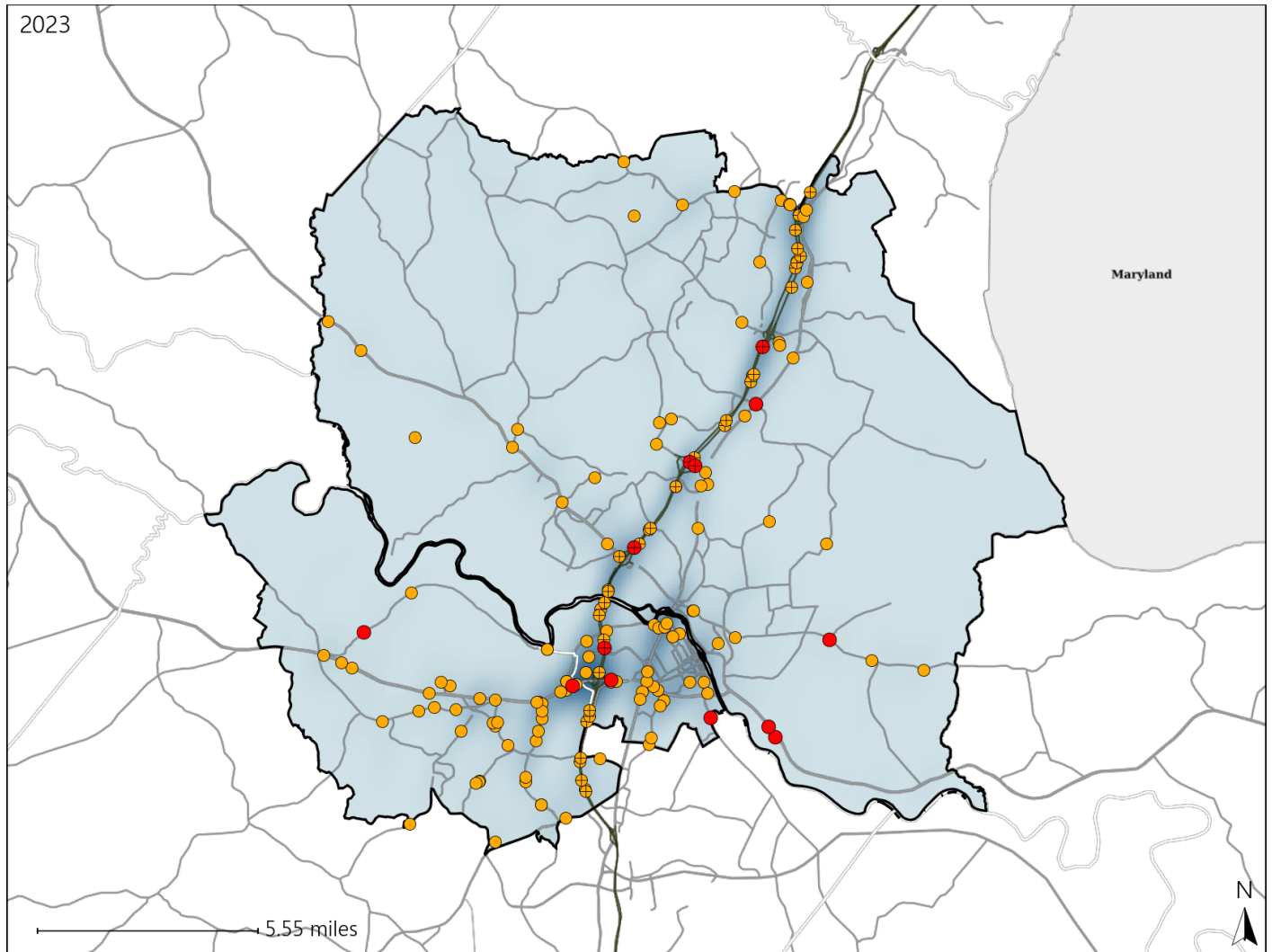


# Virginia Senate District 27 Crash Statistics

Report Generated May, 2024

	Count	Highest Time Period(s)	Highest Day(s)	Highest Month(s)
<b>Fatal Crashes</b>	<b>13</b>	<b>6:00pm - 8:59pm</b>	<b>Saturday - Thursday</b>	<b>April - December</b>
<b>Resulting Fatalities</b>	<b>16</b>	(23%)	(62%)	(46%)
<b>Serious Injury Crashes</b>	<b>144</b>	<b>3:00pm - 5:59pm</b> <b>6:00pm - 8:59pm</b>	<b>Saturday</b>	<b>May</b>
		(38%)	(19%)	(13%)



### Senate District 27 Crashes

Interstate Crashes

- Fatal
- Serious Injury

Non-interstate Crashes

- Fatal
- Serious Injury

The blue gradient represents the density of all crashes.

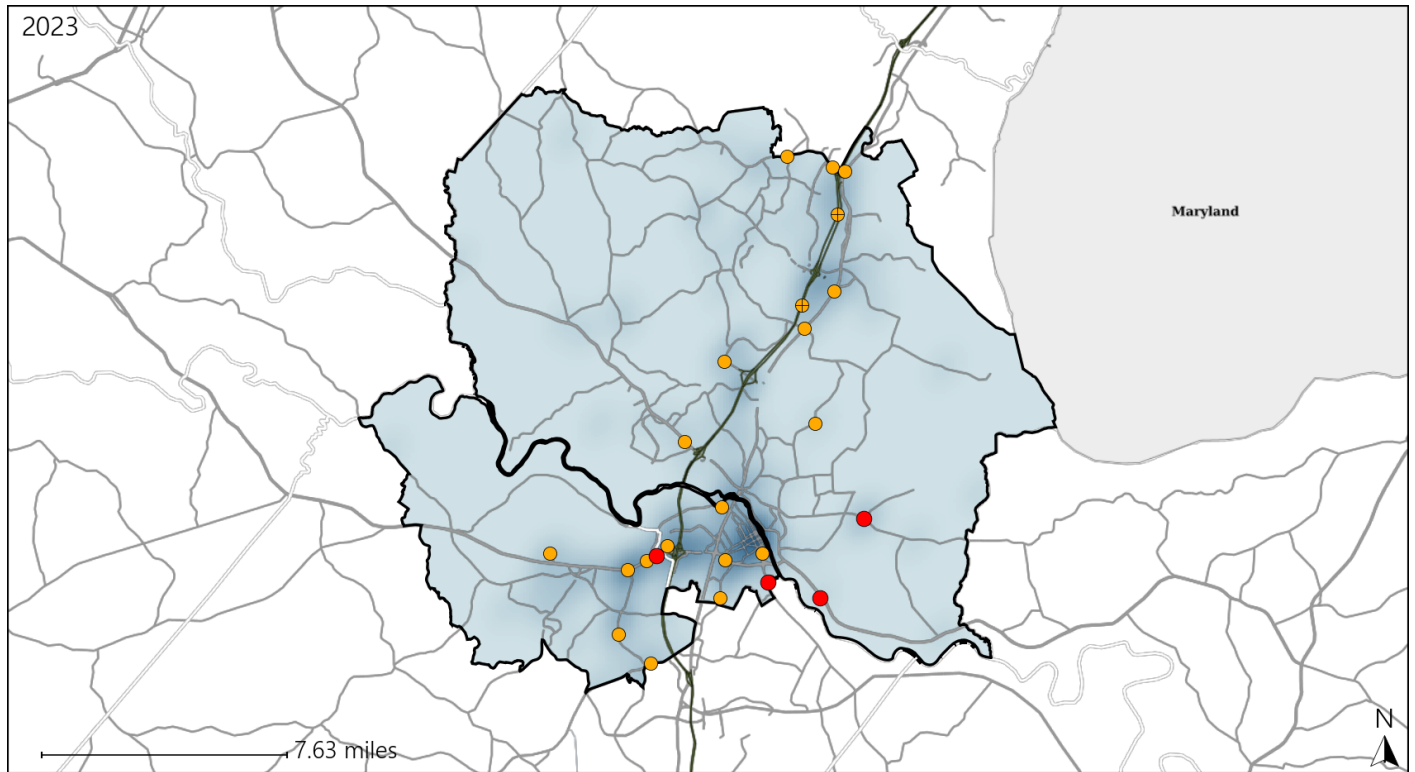


Available Crash Data - Calendar Year (CY)	CY 2020	CY 2021	CY 2022	CY 2023
Total Crashes	2885	3460	3310	3532
Fatal Crashes	11	17	20	13
Injury Crashes	899	1107	1002	1218

# Virginia Senate District 27 Alcohol Crash Statistics

Report Generated May, 2024

	Count	Highest Time Period(s)	Highest Day(s)	Highest Month(s)
<b>Fatal Crashes</b>	<b>4</b>	<b>6:00pm - 8:59pm</b>	<b>Thursday</b>	<b>April</b>
<b>Resulting Fatalities</b>	<b>5</b>	(75%)	(50%)	(50%)
<b>Serious Injury Crashes</b>	<b>20</b>	<b>9:00pm - 11:59pm</b> <b>Midnight - 2:59am</b>	<b>Saturday</b>	<b>January</b>
		(60%)	(40%)	(20%)



### Senate District 27 Alcohol-Related Crashes

Interstate Crashes

Non-interstate Crashes

● Fatal

● Fatal

⊕ Serious Injury

● Serious Injury

The blue gradient represents the density of all alcohol-related crashes.

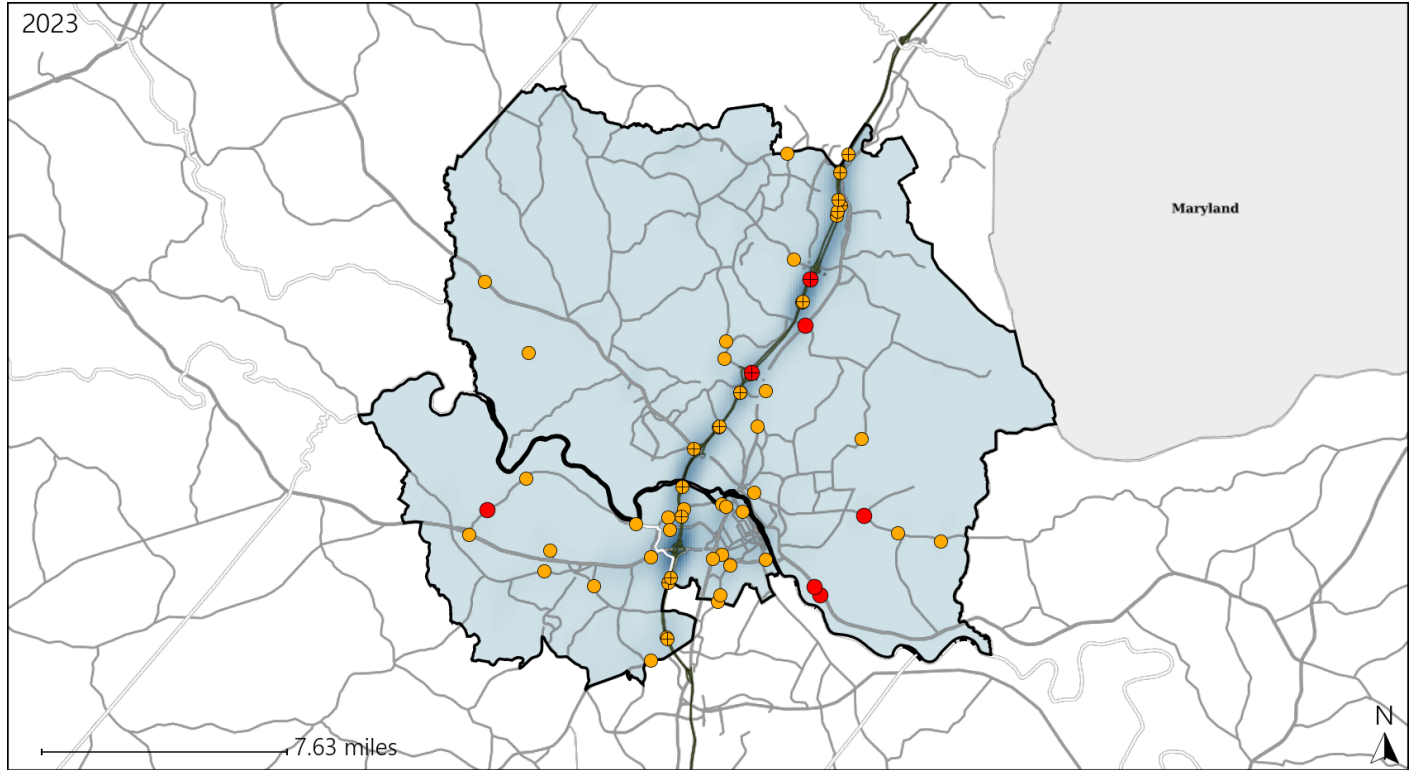


Available Crash Data - Calendar Year (CY)	CY 2020	CY 2021	CY 2022	CY 2023
Total Crashes	2885	3460	3310	3532
Fatal Crashes	11	17	20	13
Injury Crashes	899	1107	1002	1218
Alcohol-Related Fatal Crashes	1	7	4	4
Percent of Alcohol-Related Fatal Crashes to Total Fatal Crashes	9%	41%	20%	31%
Alcohol-Related Injury Crashes	62	68	73	67
Percent of Alcohol-Related Injury Crashes to Total Injury Crashes	7%	6%	7%	6%

# Virginia Senate District 27 Speed Crash Statistics

Report Generated May, 2024

	Count	Highest Time Period(s)	Highest Day(s)	Highest Month(s)
<b>Fatal Crashes</b>	<b>7</b>	<b>6:00pm - 8:59pm</b>	<b>Saturday - Tuesday</b>	<b>March</b>
<b>Resulting Fatalities</b>	<b>10</b>	(29%)	(58%)	(29%)
<b>Serious Injury Crashes</b>	<b>52</b>	<b>6:00pm - 8:59pm</b>	<b>Saturday</b>	<b>December</b>
		(19%)	(23%)	(17%)



### Senate District 27 Speed-Related Crashes

Interstate Crashes                      Non-interstate Crashes  
 ● Fatal                                      ● Fatal  
 ● Serious Injury                          ● Serious Injury

The blue gradient represents the density of all speed-related crashes.

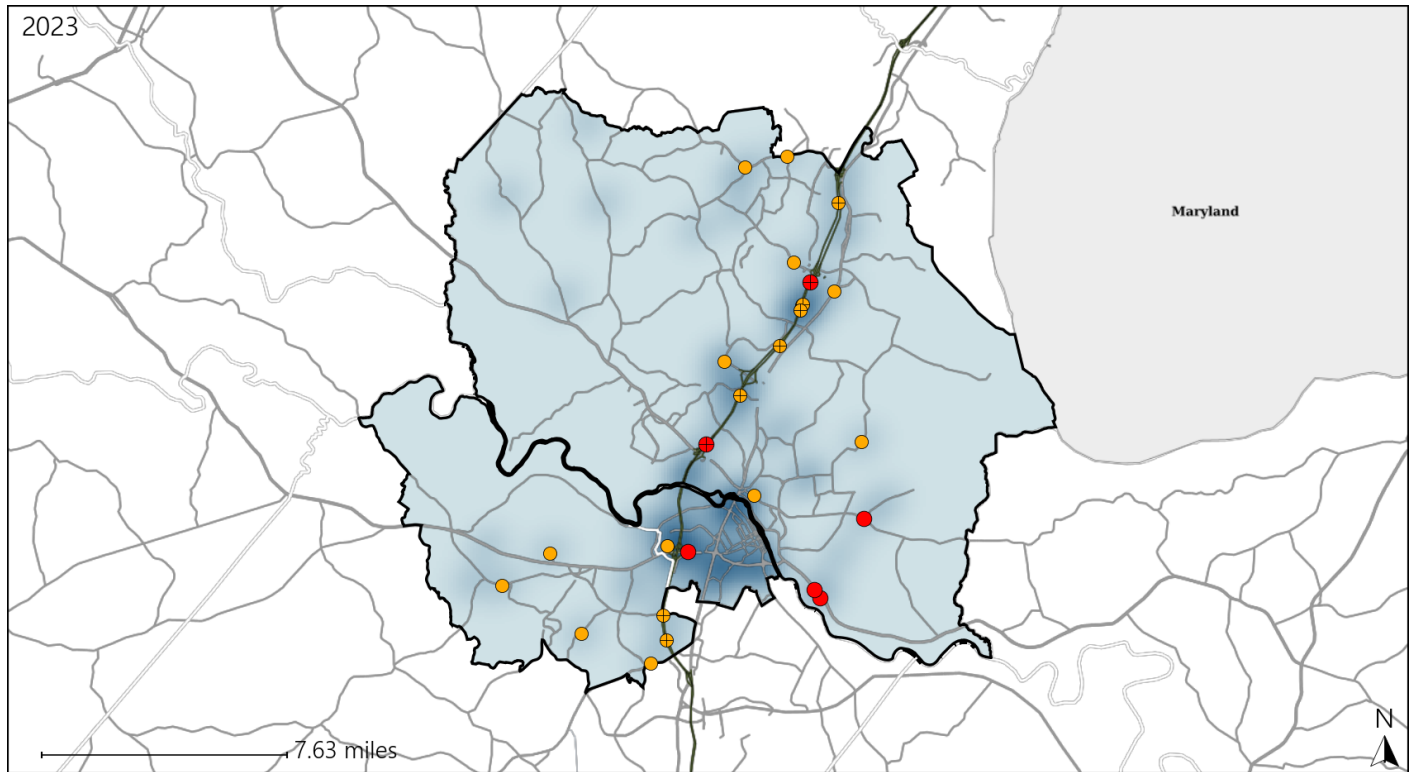


Available Crash Data - Calendar Year (CY)	CY 2020	CY 2021	CY 2022	CY 2023
Total Crashes	2885	3460	3310	3532
Fatal Crashes	11	17	20	13
Injury Crashes	899	1107	1002	1218
Speed-Related Fatal Crashes	8	8	10	7
Percent of Speed-Related Fatal Crashes to Total Fatal Crashes	73%	47%	50%	54%
Speed-Related Injury Crashes	212	271	251	282
Percent of Speed-Related Injury Crashes to Total Injury Crashes	24%	24%	25%	23%

# Virginia Senate District 27 Unrestrained Crash Statistics

Report Generated May, 2024

	Count	Highest Time Period(s)	Highest Day(s)	Highest Month(s)
<b>Fatal Crashes</b>	<b>6</b>	<b>6:00pm - 8:59pm</b>	<b>Monday • Saturday</b>	<b>December</b>
<b>Unrestrained Fatalities</b>	<b>7</b>	(33%)	(66%)	(33%)
<b>Serious Injury Crashes</b>	<b>20</b>	<b>3:00pm - 5:59pm Midnight - 2:59am</b>	<b>Saturday</b>	<b>April • August</b>
		(40%)	(25%)	(30%)



### Senate District 27 Unrestrained-Related Crashes

Interstate Crashes

Non-interstate Crashes

● Fatal

● Fatal

⊕ Serious Injury

● Serious Injury

The blue gradient represents the density of all unrestrained-related crashes.

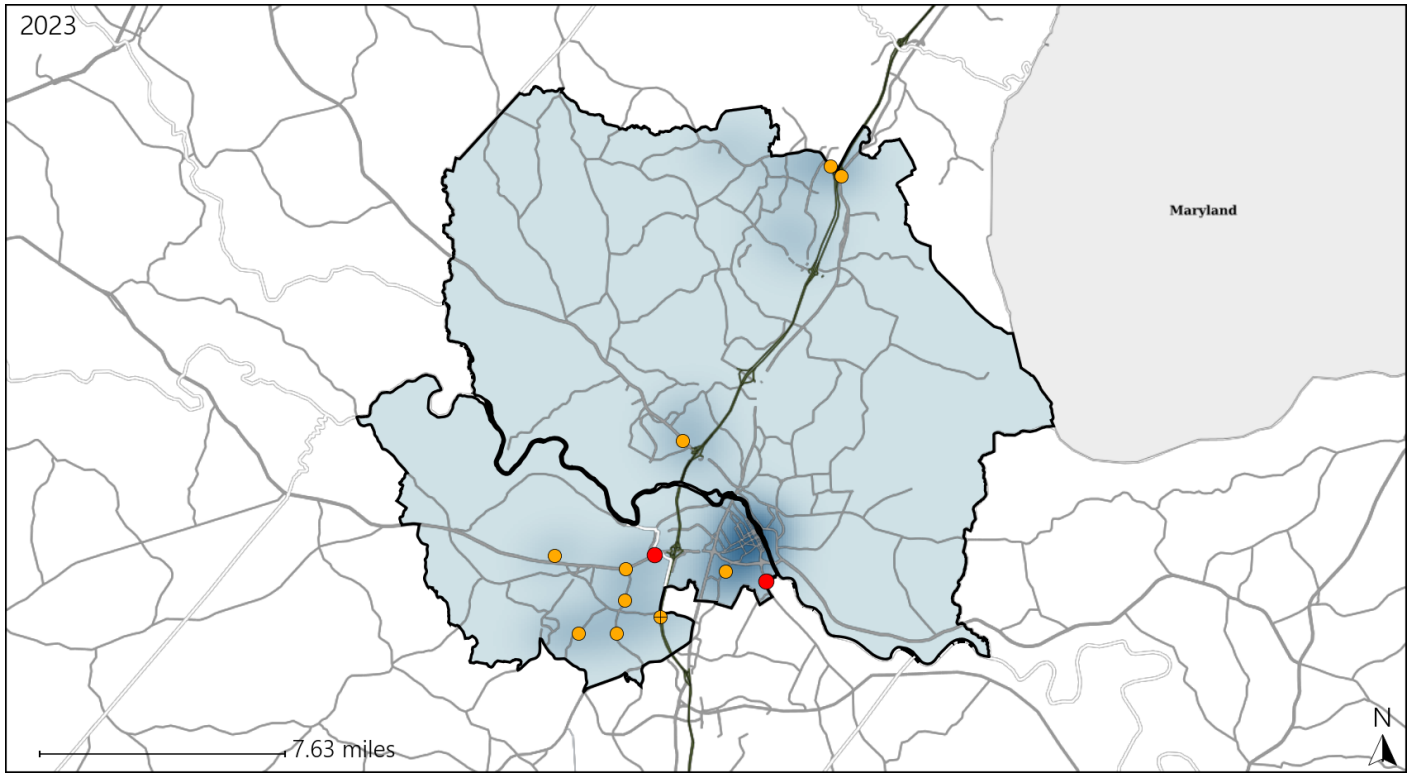


Available Crash Data - Calendar Year (CY)	CY 2020	CY 2021	CY 2022	CY 2023
Total Crashes	2885	3460	3310	3532
Fatalities	12	18	25	16
Injuries	1480	1761	1643	1998
Unrestrained Fatalities	3	3	6	7
Percent of Unrestrained Fatalities to Total Fatalities	25%	17%	24%	44%
Unrestrained Injuries	63	83	89	99
Percent of Unrestrained Injuries to Total Injuries	4%	5%	5%	5%

# Virginia Senate District 27 Pedestrian Crash Statistics

Report Generated May, 2024

	Count	Highest Time Period(s)	Highest Day(s)	Highest Month(s)
<b>Fatal Crashes</b>	<b>2</b>	6:00pm - 8:59pm	Thursday	April • December
<b>Pedestrian Fatalities</b>	<b>2</b>	9:00pm - 11:59pm (100%)	(100%)	(100%)
<b>Serious Injury Crashes</b>	<b>10</b>	6:00pm - 8:59pm 9:00pm - 11:59pm (60%)	Saturday (30%)	November (30%)



### Senate District 27 Pedestrian-Related Crashes

Interstate Crashes                      Non-interstate Crashes  
 ● Fatal                                      ● Fatal  
 ⊕ Serious Injury                          ⊕ Serious Injury

The blue gradient represents the density of all pedestrian-related crashes.



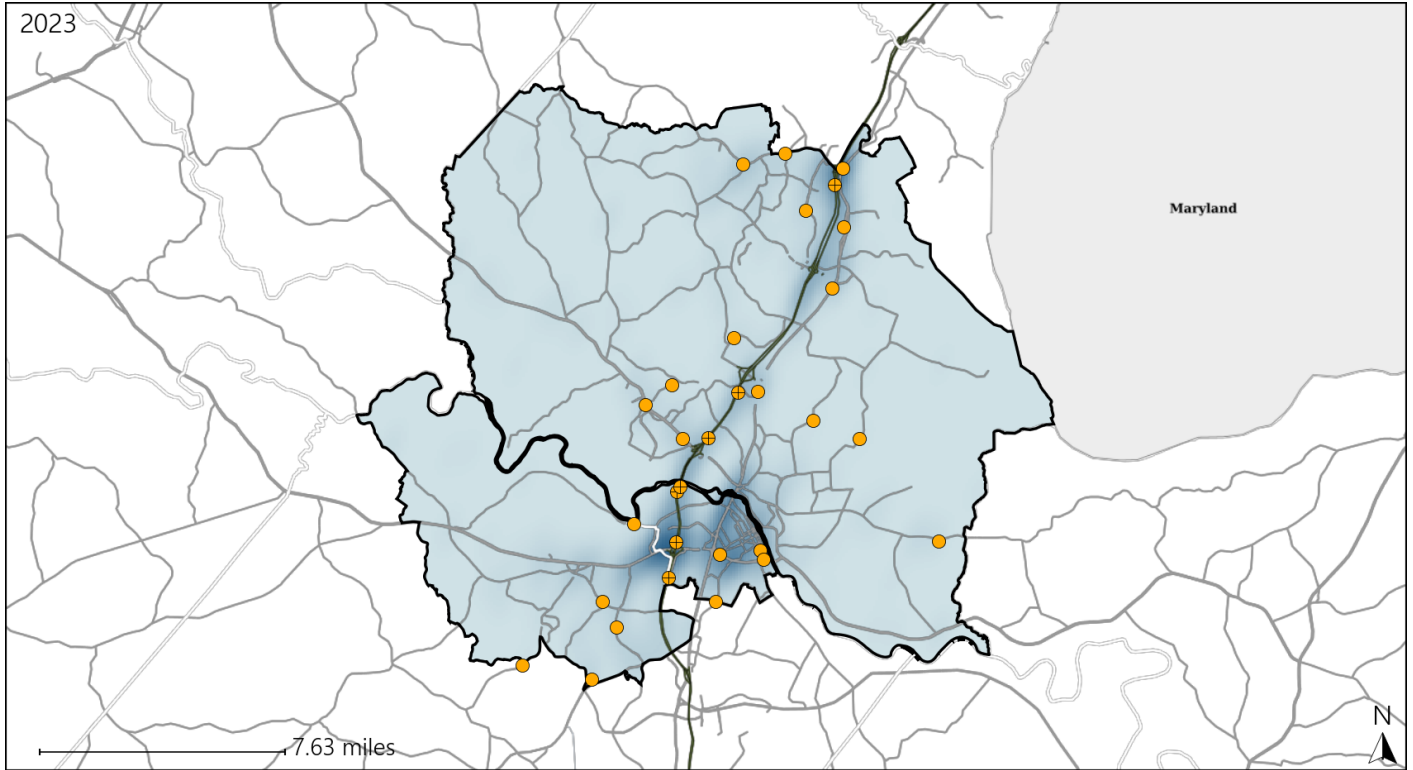
Available Crash Data - Calendar Year (CY)	CY 2020	CY 2021	CY 2022	CY 2023
Total Crashes	2885	3460	3310	3532
Fatal Crashes	11	17	20	13
Injury Crashes	899	1107	1002	1218
Pedestrian-Related Fatal Crashes	4	4	5	2
Percent of Pedestrian-Related Fatal Crashes to Total Fatal Crashes	36%	24%	25%	15%
Pedestrian-Related Injury Crashes	19	26	27	28
Percent of Pedestrian-Related Injury Crashes to Total Injury Crashes	2%	2%	3%	2%



# Virginia Senate District 27 Distracted Driving Crash Statistics

Report Generated May, 2024

	Count	Highest Time Period(s)	Highest Day(s)	Highest Month(s)
<b>Fatal Crashes</b>	<b>0</b>	-	-	-
<b>Resulting Fatalities</b>	<b>0</b>	-	-	-
<b>Serious Injury Crashes</b>	<b>30</b>	<b>6:00pm - 8:59pm</b> (20%)	<b>Saturday</b> (27%)	<b>October</b> (20%)



## Senate District 27 Distracted Driving-Related Crashes

- |                    |                        |
|--------------------|------------------------|
| Interstate Crashes | Non-interstate Crashes |
| ● Fatal            | ● Fatal                |
| ⊕ Serious Injury   | ● Serious Injury       |

The blue gradient represents the density of all distracted driving-related crashes.



Available Crash Data - Calendar Year (CY)	CY 2020	CY 2021	CY 2022	CY 2023
Total Crashes	2885	3460	3310	3532
Fatal Crashes	11	17	20	13
Injury Crashes	899	1107	1002	1218
Distracted Driving-Related Fatal Crashes	3	3	3	0
Percent of Distracted Driving-Related Fatal Crashes to Total Fatal Crashes	27%	18%	15%	0%
Distracted Driving-Related Injury Crashes	228	265	241	303
Percent of Distracted Driving-Related Injury Crashes to Total Injury Crashes	25%	24%	24%	25%