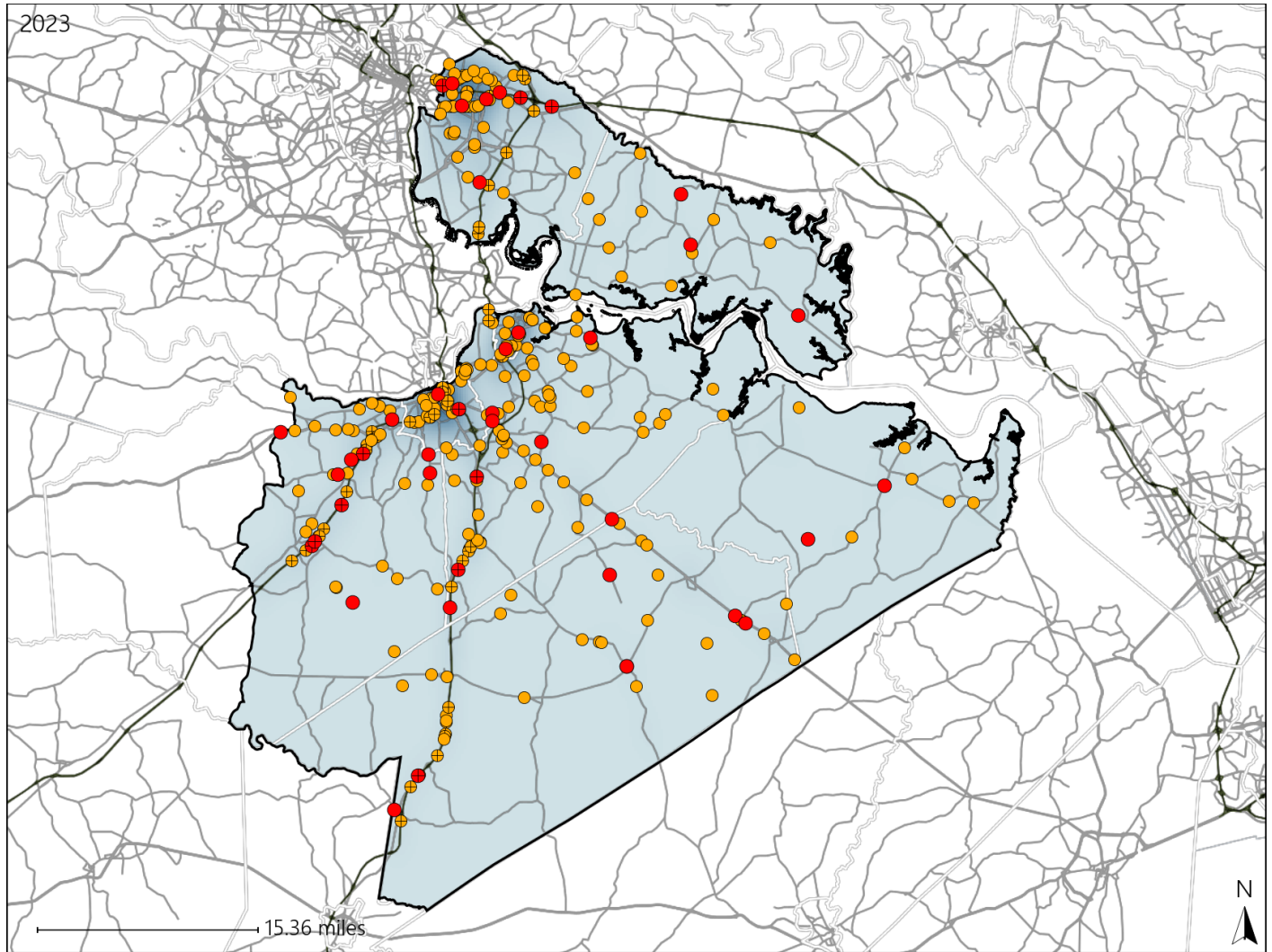


Virginia Senate District 13 Crash Statistics

Report Generated May, 2024

	Count	Highest Time Period(s)	Highest Day(s)	Highest Month(s)
Fatal Crashes	43	6:00pm - 8:59pm	Thursday	July - May
Resulting Fatalities	47	(23%)	(26%)	(32%)
Serious Injury Crashes	277	3:00pm - 5:59pm	Friday - Sunday	April - March
		(20%)	(34%)	(20%)



Senate District 13 Crashes

Interstate Crashes

- Fatal
- Serious Injury

Non-interstate Crashes

- Fatal
- Serious Injury

The blue gradient represents the density of all crashes.

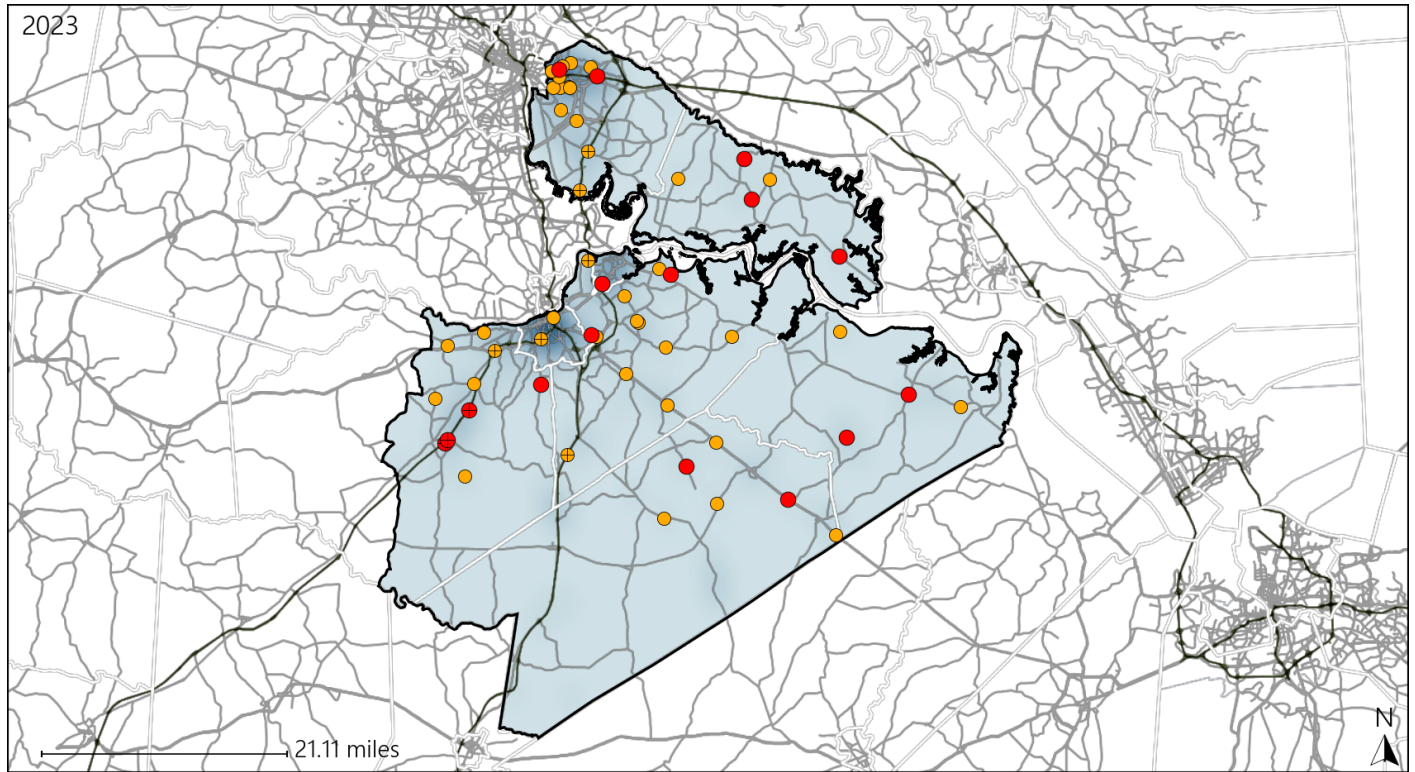


Available Crash Data - Calendar Year (CY)	CY 2020	CY 2021	CY 2022	CY 2023
Total Crashes	3673	4080	4206	4041
Fatal Crashes	38	43	44	43
Injury Crashes	1465	1442	1554	1534

Virginia Senate District 13 Alcohol Crash Statistics

Report Generated May, 2024

	Count	Highest Time Period(s)	Highest Day(s)	Highest Month(s)
Fatal Crashes	16	6:00pm - 8:59pm	Sunday	July • May
Resulting Fatalities	17	(38%)	(31%)	(62%)
Serious Injury Crashes	41	9:00pm - 11:59pm	Sunday	April • February
		(39%)	(32%)	(34%)



Senate District 13 Alcohol-Related Crashes

Interstate Crashes

Non-interstate Crashes

- Fatal
- Serious Injury

- Fatal
- Serious Injury

The blue gradient represents the density of all alcohol-related crashes.

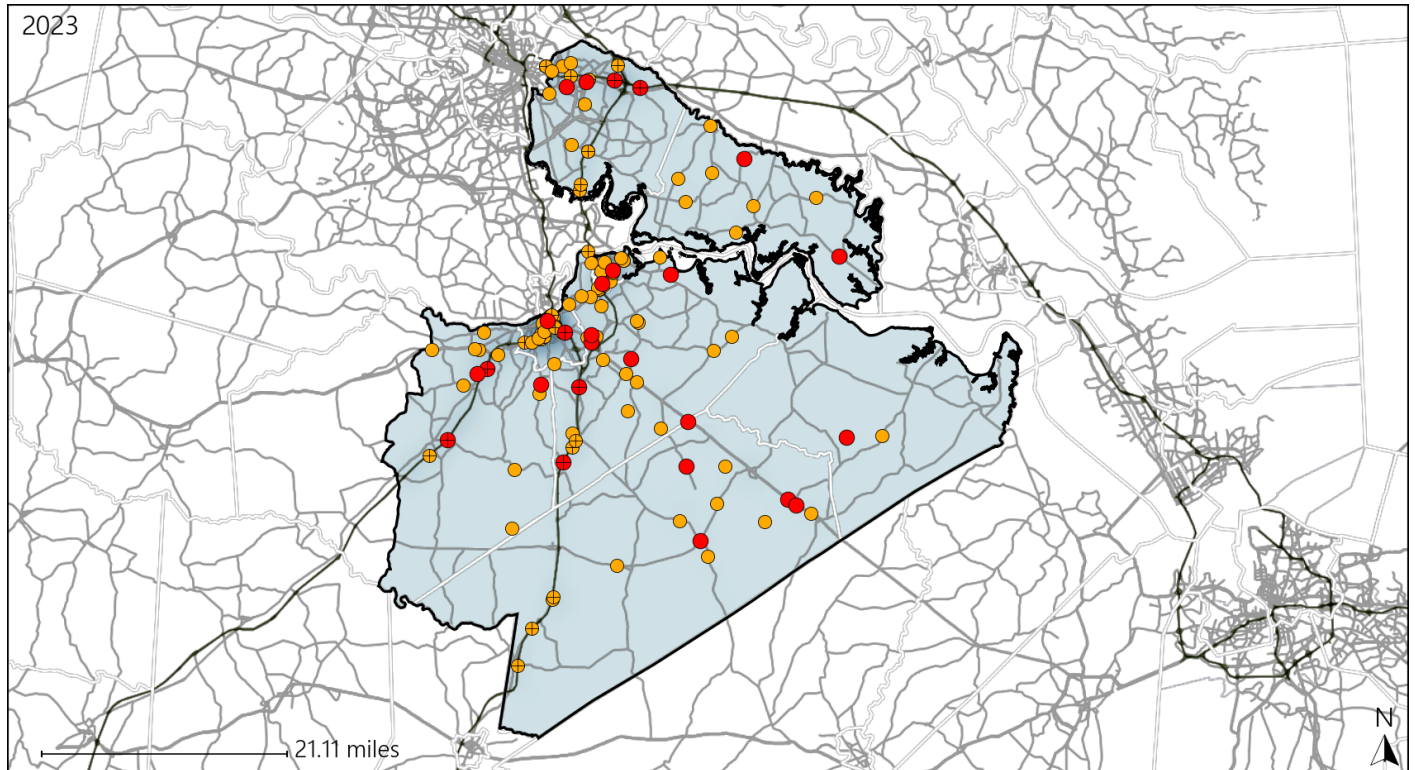


Available Crash Data - Calendar Year (CY)	CY 2020	CY 2021	CY 2022	CY 2023
Total Crashes	3673	4080	4206	4041
Fatal Crashes	38	43	44	43
Injury Crashes	1465	1442	1554	1534
Alcohol-Related Fatal Crashes	8	11	16	16
Percent of Alcohol-Related Fatal Crashes to Total Fatal Crashes	21%	26%	36%	37%
Alcohol-Related Injury Crashes	118	122	103	112
Percent of Alcohol-Related Injury Crashes to Total Injury Crashes	8%	8%	7%	7%

Virginia Senate District 13 Speed Crash Statistics

Report Generated May, 2024

	Count	Highest Time Period(s)	Highest Day(s)	Highest Month(s)
Fatal Crashes	26	6:00pm - 8:59pm	Sunday • Thursday	July • March
Resulting Fatalities	29	(23%)	(54%)	(46%)
Serious Injury Crashes	97	6:00pm - 8:59pm	Friday • Saturday	February • October
		(21%)	(38%)	(20%)



Senate District 13 Speed-Related Crashes

Interstate Crashes Non-interstate Crashes
 ● Fatal ● Fatal
 ⊕ Serious Injury ⊕ Serious Injury

The blue gradient represents the density of all speed-related crashes.

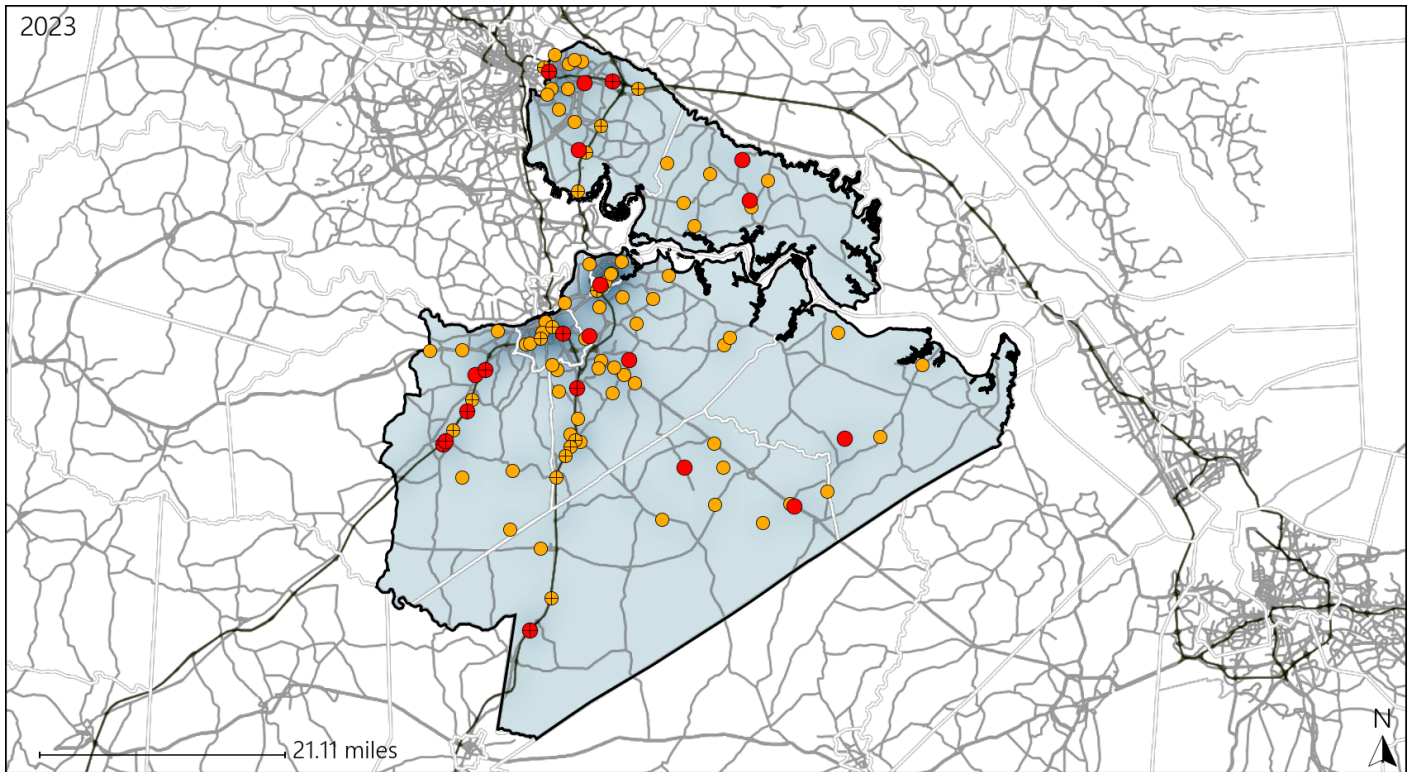


Available Crash Data - Calendar Year (CY)	CY 2020	CY 2021	CY 2022	CY 2023
Total Crashes	3673	4080	4206	4041
Fatal Crashes	38	43	44	43
Injury Crashes	1465	1442	1554	1534
Speed-Related Fatal Crashes	17	16	18	26
Percent of Speed-Related Fatal Crashes to Total Fatal Crashes	45%	37%	41%	60%
Speed-Related Injury Crashes	283	293	290	288
Percent of Speed-Related Injury Crashes to Total Injury Crashes	19%	20%	19%	19%

Virginia Senate District 13 Unrestrained Crash Statistics

Report Generated May, 2024

	Count	Highest Time Period(s)	Highest Day(s)	Highest Month(s)
Fatal Crashes	20	9:00am - 11:59am	Thursday	July
Unrestrained Fatalities	21	(25%)	(30%)	(25%)
Serious Injury Crashes	79	3:00pm - 5:59pm 9:00pm - 11:59pm	Saturday	January • June
		(36%)	(20%)	(20%)



Senate District 13 Unrestrained-Related Crashes

Interstate Crashes

- Fatal
- Serious Injury

Non-interstate Crashes

- Fatal
- Serious Injury

The blue gradient represents the density of all unrestrained-related crashes.

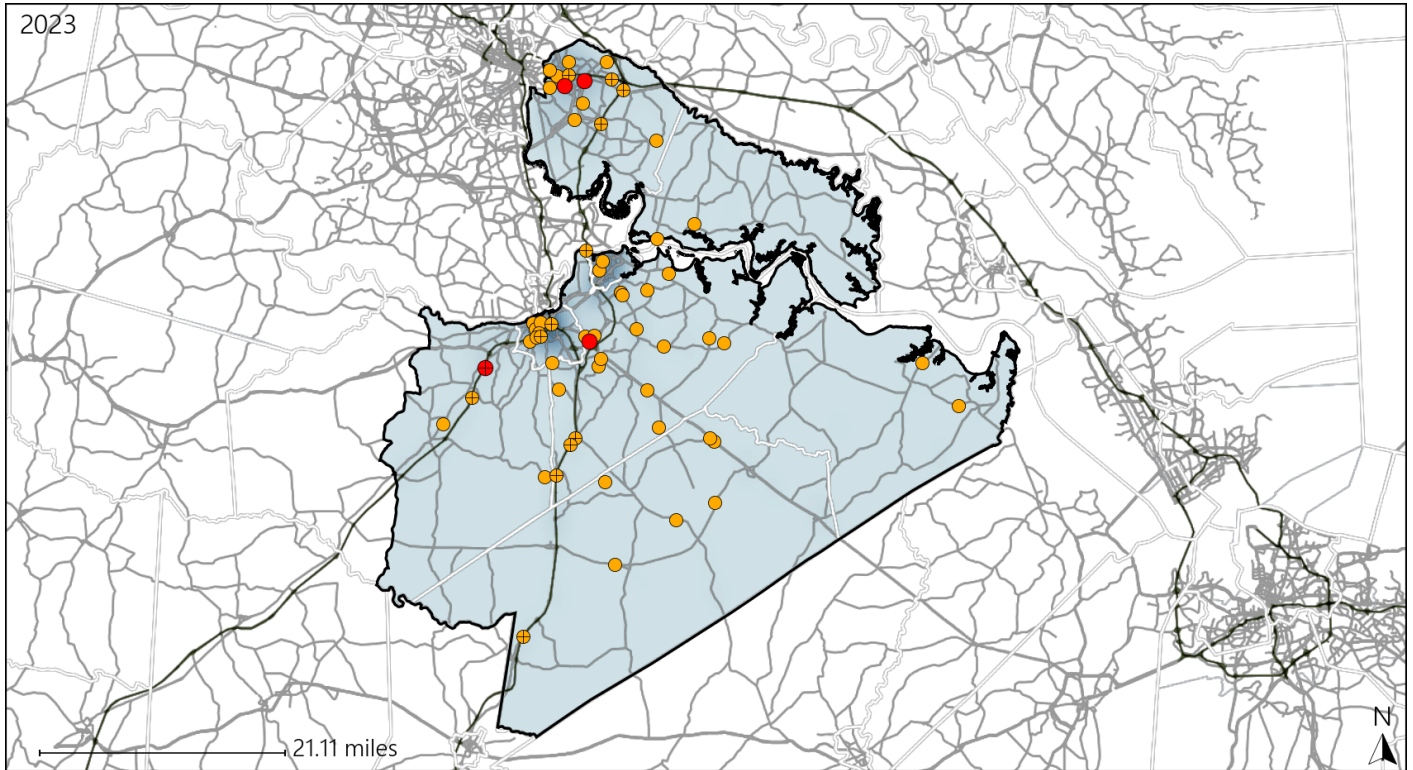


Available Crash Data - Calendar Year (CY)	CY 2020	CY 2021	CY 2022	CY 2023
Total Crashes	3673	4080	4206	4041
Fatalities	44	46	47	47
Injuries	2440	2465	2661	2602
Unrestrained Fatalities	20	15	19	21
Percent of Unrestrained Fatalities to Total Fatalities	45%	33%	40%	45%
Unrestrained Injuries	227	195	200	249
Percent of Unrestrained Injuries to Total Injuries	9%	8%	8%	10%

Virginia Senate District 13 Distracted Driving Crash Statistics

Report Generated May, 2024

	Count	Highest Time Period(s)	Highest Day(s)	Highest Month(s)
Fatal Crashes	4	6:00pm - 8:59pm	Friday • Monday	August • January
Resulting Fatalities	4	9:00am - 11:59am (50%)	(50%)	(50%)
Serious Injury Crashes	58	9:00pm - 11:59pm (19%)	Sunday (19%)	May (16%)



Senate District 13 Distracted Driving-Related Crashes

Interstate Crashes

- Fatal
- ⊕ Serious Injury

Non-interstate Crashes

- Fatal
- Serious Injury

The blue gradient represents the density of all distracted driving-related crashes.



Available Crash Data - Calendar Year (CY)	CY 2020	CY 2021	CY 2022	CY 2023
Total Crashes	3673	4080	4206	4041
Fatal Crashes	38	43	44	43
Injury Crashes	1465	1442	1554	1534
Distracted Driving-Related Fatal Crashes	3	4	7	4
Percent of Distracted Driving-Related Fatal Crashes to Total Fatal Crashes	8%	9%	16%	9%
Distracted Driving-Related Injury Crashes	287	282	282	339
Percent of Distracted Driving-Related Injury Crashes to Total Injury Crashes	20%	20%	18%	22%