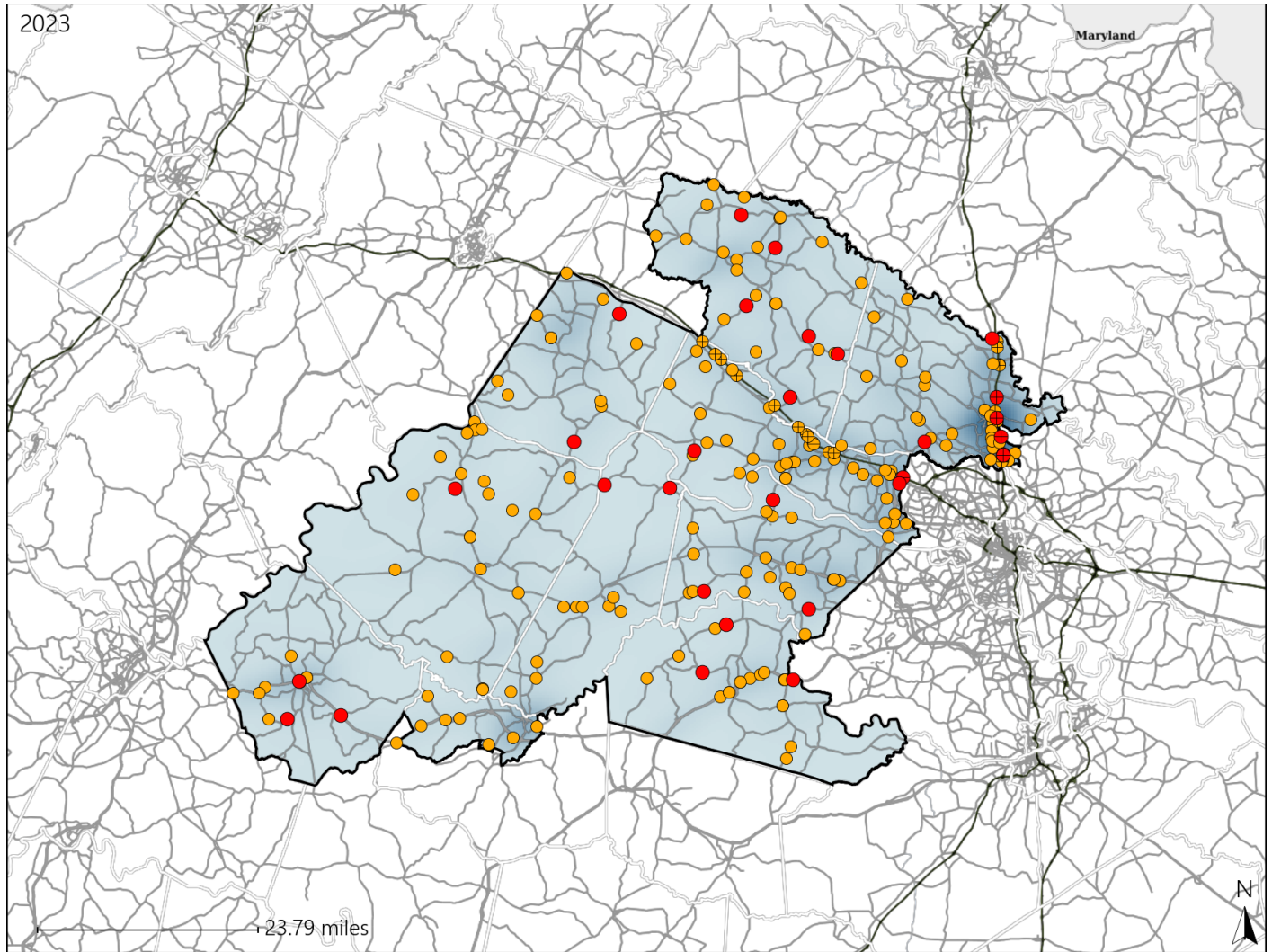


Virginia Senate District 10 Crash Statistics

Report Generated May, 2024

	Count	Highest Time Period(s)	Highest Day(s)	Highest Month(s)
Fatal Crashes	31	Noon - 2:59pm (29%)	Friday • Saturday (46%)	August • June (38%)
Resulting Fatalities	34			
Serious Injury Crashes	197	3:00pm - 5:59pm (21%)	Sunday (21%)	August • May (22%)



Senate District 10 Crashes

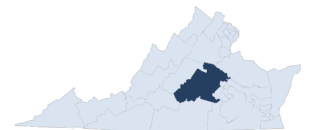
Interstate Crashes

- Fatal
- Serious Injury

Non-interstate Crashes

- Fatal
- Serious Injury

The blue gradient represents the density of all crashes.

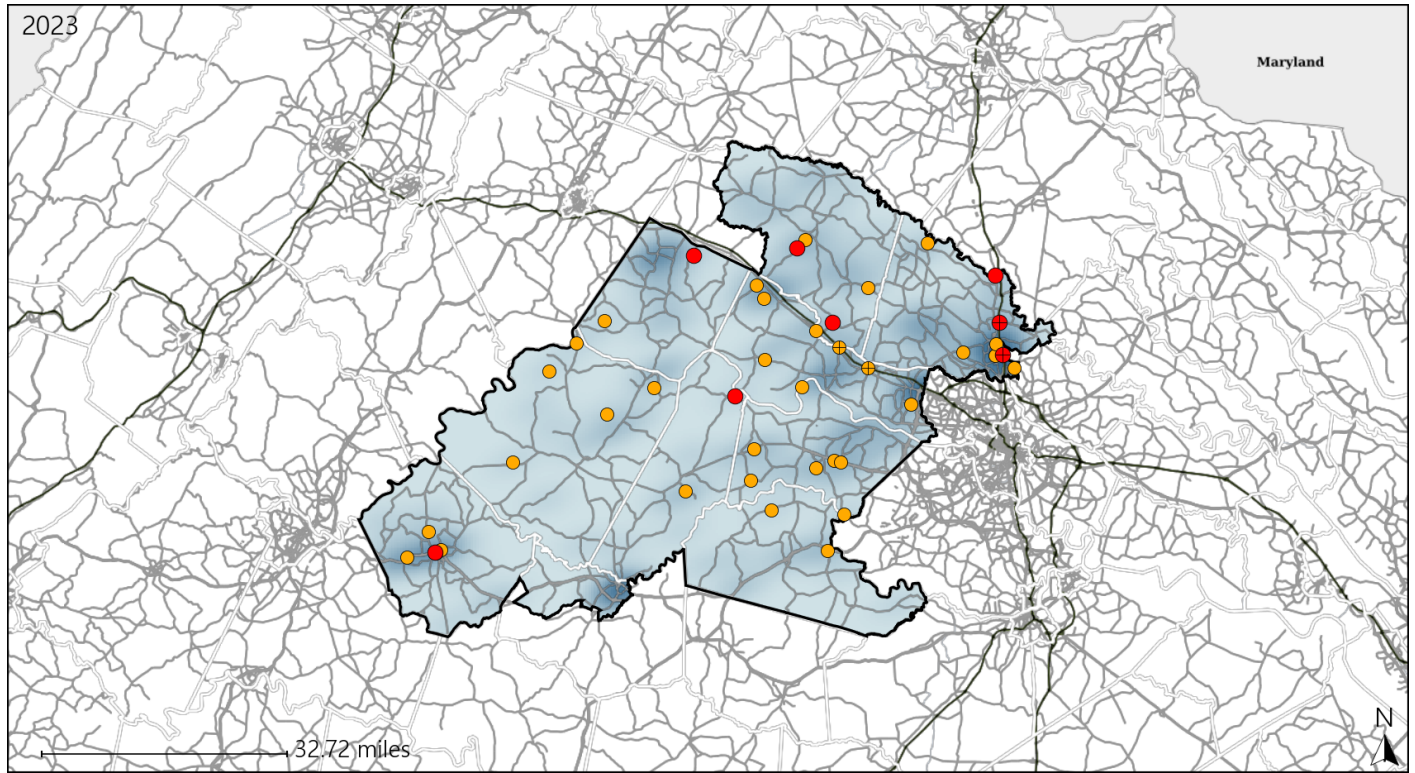


Available Crash Data - Calendar Year (CY)	CY 2020	CY 2021	CY 2022	CY 2023
Total Crashes	2763	3184	3152	3243
Fatal Crashes	40	50	45	31
Injury Crashes	910	966	943	1004

Virginia Senate District 10 Alcohol Crash Statistics

Report Generated May, 2024

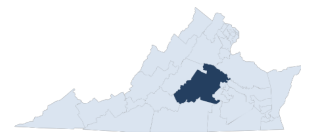
	Count	Highest Time Period(s)	Highest Day(s)	Highest Month(s)
Fatal Crashes	8	3:00pm - 5:59pm	Saturday	April • August
Resulting Fatalities	8	6:00pm - 8:59pm (50%)	(50%)	(50%)
Serious Injury Crashes	34	3:00pm - 5:59pm 9:00pm - 11:59pm (48%)	Wednesday (32%)	February • July (36%)



Senate District 10 Alcohol-Related Crashes

Interstate Crashes Non-interstate Crashes
 ● Fatal ● Fatal
 ⊕ Serious Injury ⊕ Serious Injury

The blue gradient represents the density of all alcohol-related crashes.

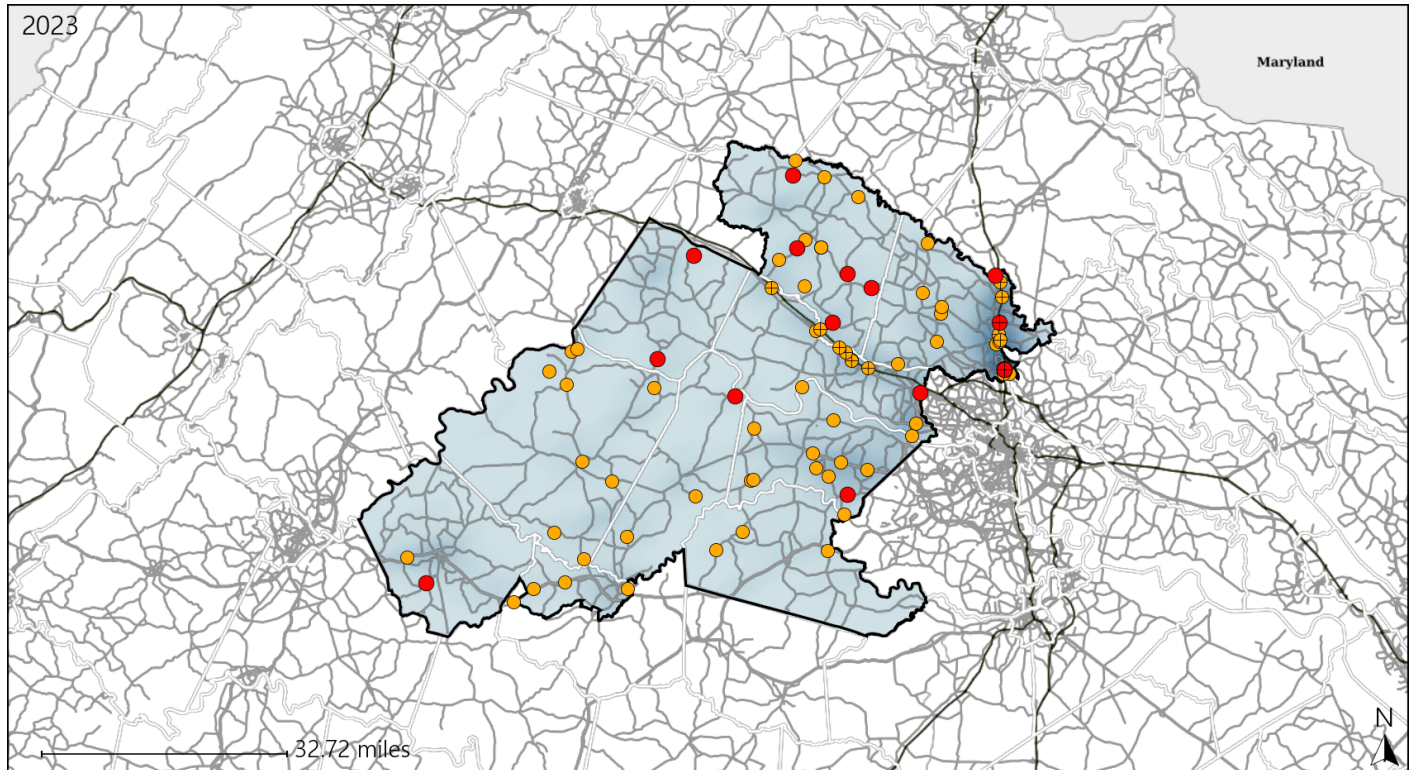


Available Crash Data - Calendar Year (CY)	CY 2020	CY 2021	CY 2022	CY 2023
Total Crashes	2763	3184	3152	3243
Fatal Crashes	40	50	45	31
Injury Crashes	910	966	943	1004
Alcohol-Related Fatal Crashes	14	11	6	8
Percent of Alcohol-Related Fatal Crashes to Total Fatal Crashes	35%	22%	13%	26%
Alcohol-Related Injury Crashes	75	84	68	89
Percent of Alcohol-Related Injury Crashes to Total Injury Crashes	8%	9%	7%	9%

Virginia Senate District 10 Speed Crash Statistics

Report Generated May, 2024

	Count	Highest Time Period(s)	Highest Day(s)	Highest Month(s)
Fatal Crashes	16	3:00pm - 5:59pm	Friday • Saturday	August
Resulting Fatalities	19	(31%)	(62%)	(25%)
Serious Injury Crashes	63	3:00pm - 5:59pm	Sunday	August
		(22%)	(25%)	(16%)



Senate District 10 Speed-Related Crashes

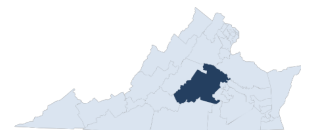
Interstate Crashes

- Fatal
- Serious Injury

Non-interstate Crashes

- Fatal
- Serious Injury

The blue gradient represents the density of all speed-related crashes.

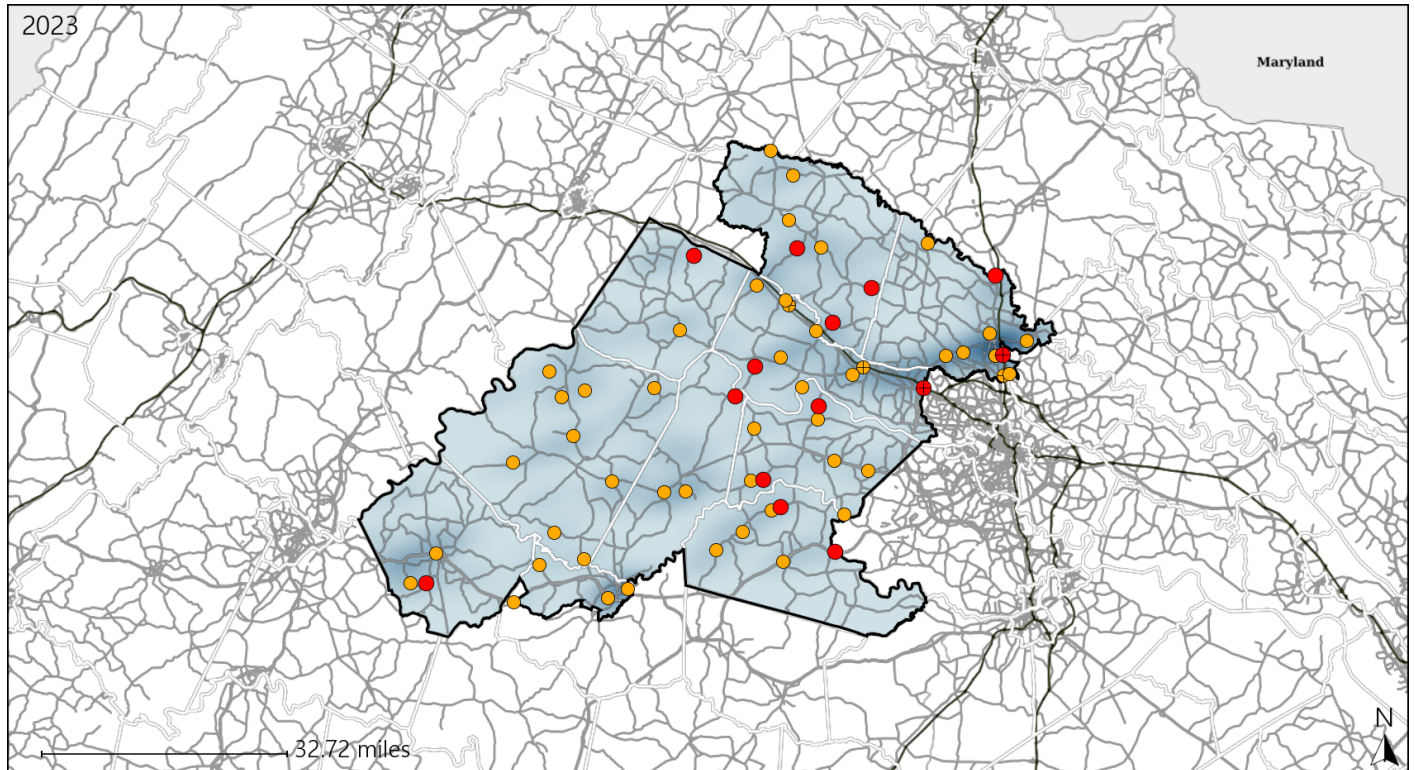


Available Crash Data - Calendar Year (CY)	CY 2020	CY 2021	CY 2022	CY 2023
Total Crashes	2763	3184	3152	3243
Fatal Crashes	40	50	45	31
Injury Crashes	910	966	943	1004
Speed-Related Fatal Crashes	17	24	19	16
Percent of Speed-Related Fatal Crashes to Total Fatal Crashes	43%	48%	42%	52%
Speed-Related Injury Crashes	210	240	227	213
Percent of Speed-Related Injury Crashes to Total Injury Crashes	23%	25%	24%	21%

Virginia Senate District 10 Unrestrained Crash Statistics

Report Generated May, 2024

	Count	Highest Time Period(s)	Highest Day(s)	Highest Month(s)
Fatal Crashes	14	Noon - 2:59pm	Saturday	June • November
Unrestrained Fatalities	14	(36%)	(36%)	(42%)
Serious Injury Crashes	48	Noon - 2:59pm	Wednesday	December • February
		(23%)	(21%)	(34%)



Senate District 10 Unrestrained-Related Crashes

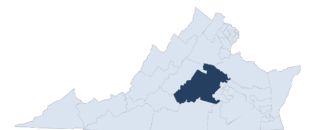
Interstate Crashes

Non-interstate Crashes

- Fatal
- Serious Injury

- Fatal
- Serious Injury

The blue gradient represents the density of all unrestrained-related crashes.

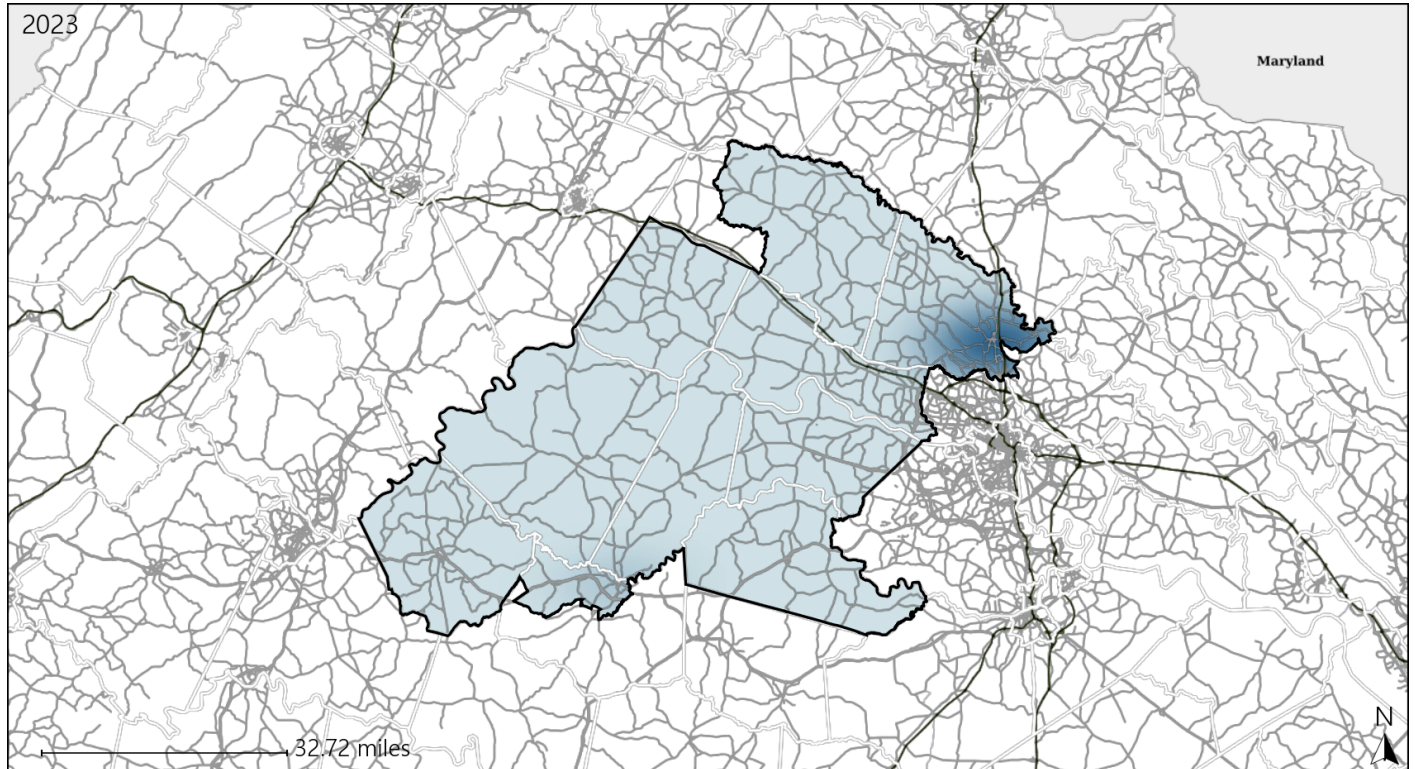


Available Crash Data - Calendar Year (CY)	CY 2020	CY 2021	CY 2022	CY 2023
Total Crashes	2763	3184	3152	3243
Fatalities	42	55	51	34
Injuries	1345	1370	1386	1477
Unrestrained Fatalities	25	21	24	14
Percent of Unrestrained Fatalities to Total Fatalities	60%	38%	47%	41%
Unrestrained Injuries	174	186	166	150
Percent of Unrestrained Injuries to Total Injuries	13%	14%	12%	10%

Virginia Senate District 10 Bicycle Crash Statistics

Report Generated May, 2024

	Count	Highest Time Period(s)	Highest Day(s)	Highest Month(s)
Fatal Crashes	0	-	-	-
Bicycle Fatalities	0	-	-	-
Serious Injury Crashes	0	-	-	-



Senate District 10 Bicycle-Related Crashes

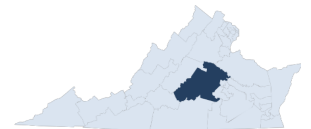
Interstate Crashes

Non-interstate Crashes

- Fatal
- Serious Injury

- Fatal
- Serious Injury

The blue gradient represents the density of all bicycle-related crashes.

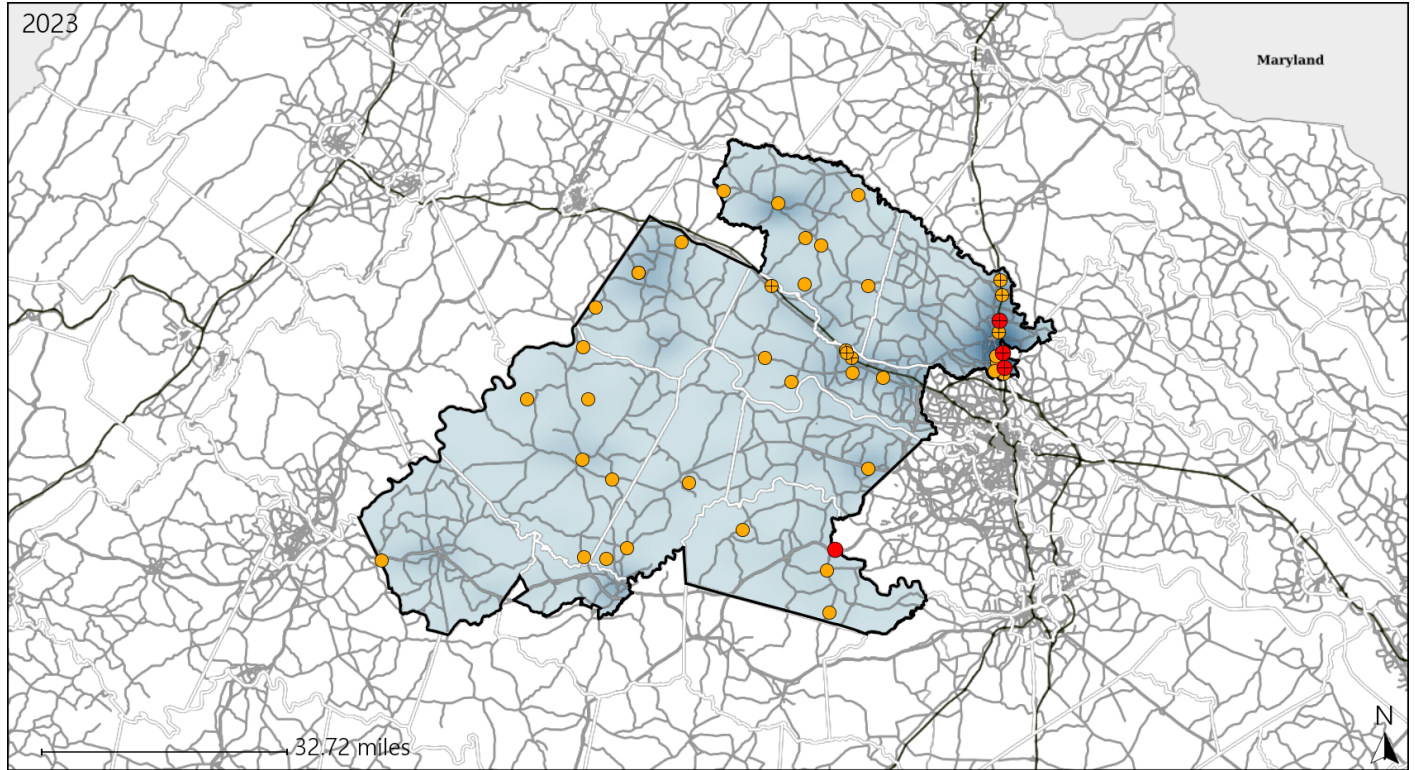


Available Crash Data - Calendar Year (CY)	CY 2020	CY 2021	CY 2022	CY 2023
Total Crashes	2763	3184	3152	3243
Fatal Crashes	40	50	45	31
Injury Crashes	910	966	943	1004
Bicycle-Related Fatal Crashes	0	1	0	0
Percent of Bicycle-Related Fatal Crashes to Total Fatal Crashes	0%	2%	0%	0%
Bicycle-Related Injury Crashes	4	6	2	6
Percent of Bicycle-Related Injury Crashes to Total Injury Crashes	0%	1%	0%	1%

Virginia Senate District 10 Distracted Driving Crash Statistics

Report Generated May, 2024

	Count	Highest Time Period(s)	Highest Day(s)	Highest Month(s)
Fatal Crashes	4	Midnight - 2:59am	Saturday	August
Resulting Fatalities	6	(50%)	(50%)	(50%)
Serious Injury Crashes	40	6:00am - 8:59am	Sunday	October
		(30%)	(20%)	(18%)



Senate District 10 Distracted Driving-Related Crashes

- | | |
|--------------------|------------------------|
| Interstate Crashes | Non-interstate Crashes |
| Fatal | Fatal |
| Serious Injury | Serious Injury |

The blue gradient represents the density of all distracted driving-related crashes.



Available Crash Data - Calendar Year (CY)	CY 2020	CY 2021	CY 2022	CY 2023
Total Crashes	2763	3184	3152	3243
Fatal Crashes	40	50	45	31
Injury Crashes	910	966	943	1004
Distracted Driving-Related Fatal Crashes	4	9	3	4
Percent of Distracted Driving-Related Fatal Crashes to Total Fatal Crashes	10%	18%	7%	13%
Distracted Driving-Related Injury Crashes	155	181	149	154
Percent of Distracted Driving-Related Injury Crashes to Total Injury Crashes	17%	19%	16%	15%