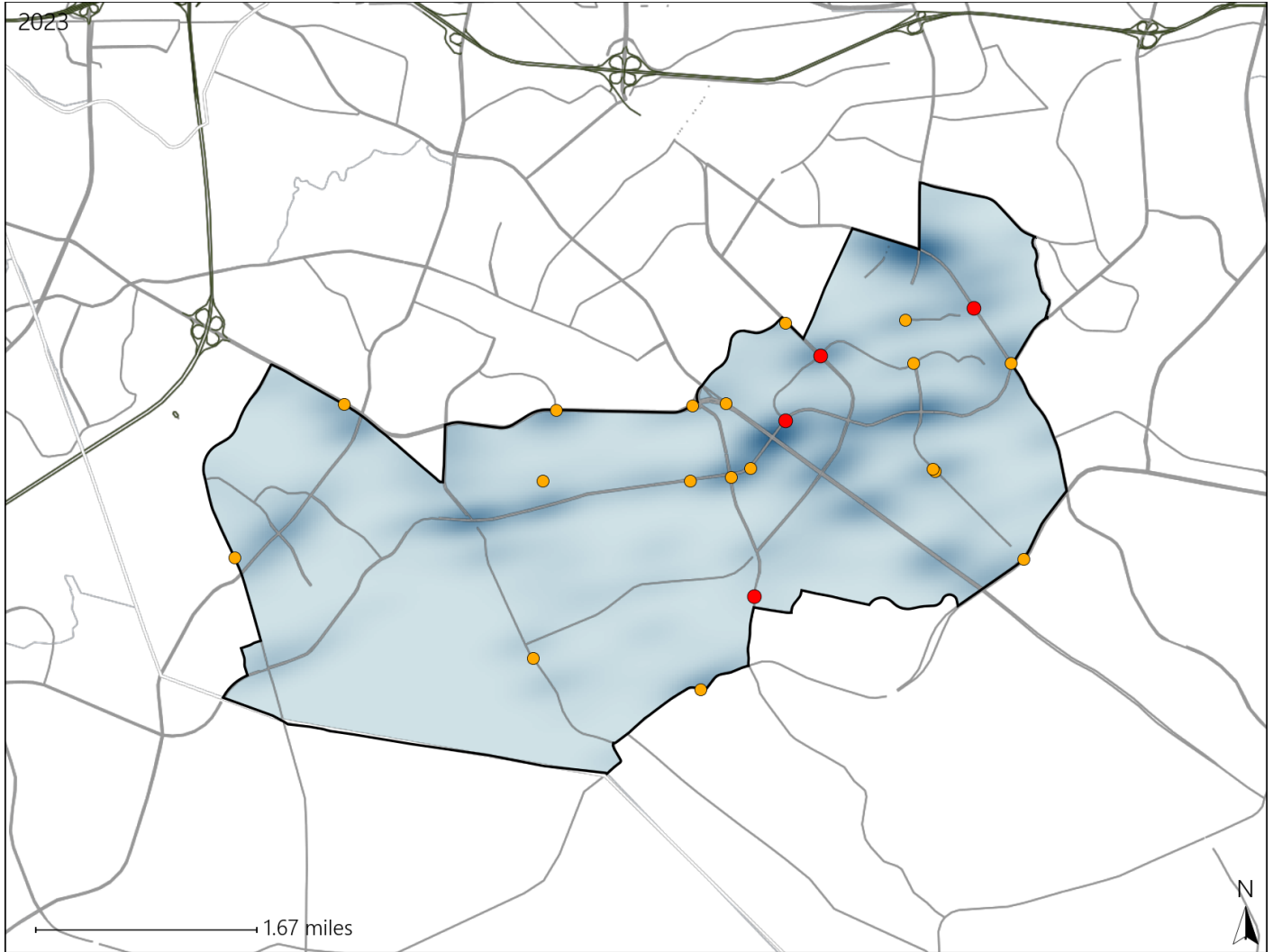


Virginia House District 96 Crash Statistics

Report Generated May, 2024

	Count	Highest Time Period(s)	Highest Day(s)	Highest Month(s)
Fatal Crashes	4	6:00pm - 8:59pm	Monday	September
Resulting Fatalities	4	(50%)	(50%)	(50%)
Serious Injury Crashes	19	Noon - 2:59pm	Saturday	December
		(21%)	(26%)	(21%)



House District 96 Crashes

Interstate Crashes

- Fatal
- Serious Injury

Non-interstate Crashes

- Fatal
- Serious Injury

The blue gradient represents the density of all crashes.

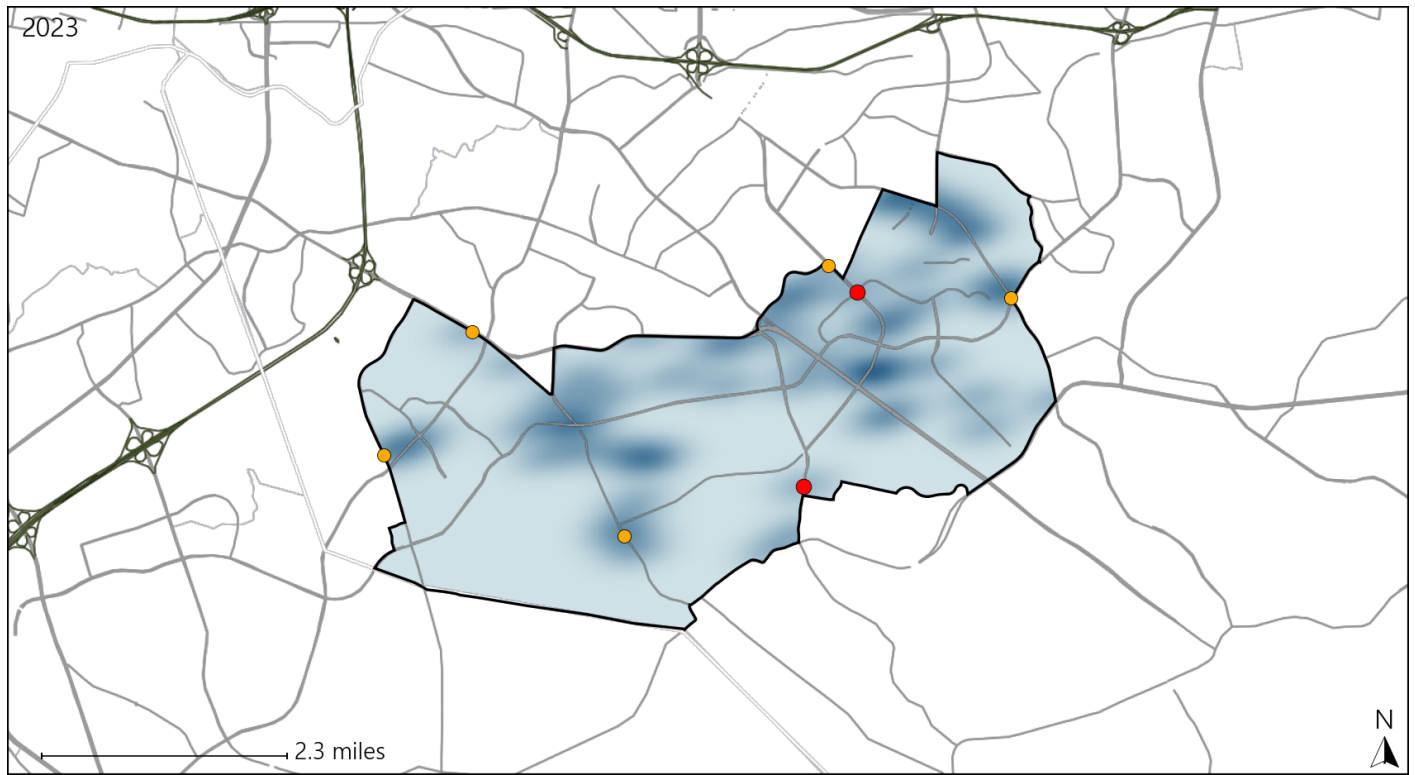


Available Crash Data - Calendar Year (CY)	CY 2020	CY 2021	CY 2022	CY 2023
Total Crashes	680	739	712	682
Fatal Crashes	2	1	3	4
Injury Crashes	198	274	221	239

Virginia House District 96 Alcohol Crash Statistics

Report Generated May, 2024

	Count	Highest Time Period(s)	Highest Day(s)	Highest Month(s)
Fatal Crashes	2	9:00am - 11:59am	Monday • Saturday	September
Resulting Fatalities	2	Midnight - 2:59am (100%)	(100%)	(100%)
Serious Injury Crashes	5	3:00am - 5:59am 6:00pm - 8:59pm (40%)	Friday (40%)	April • December (40%)



House District 96 Alcohol-Related Crashes

Interstate Crashes Non-interstate Crashes
 ● Fatal ● Fatal
 ⊕ Serious Injury ⊕ Serious Injury

The blue gradient represents the density of all alcohol-related crashes.

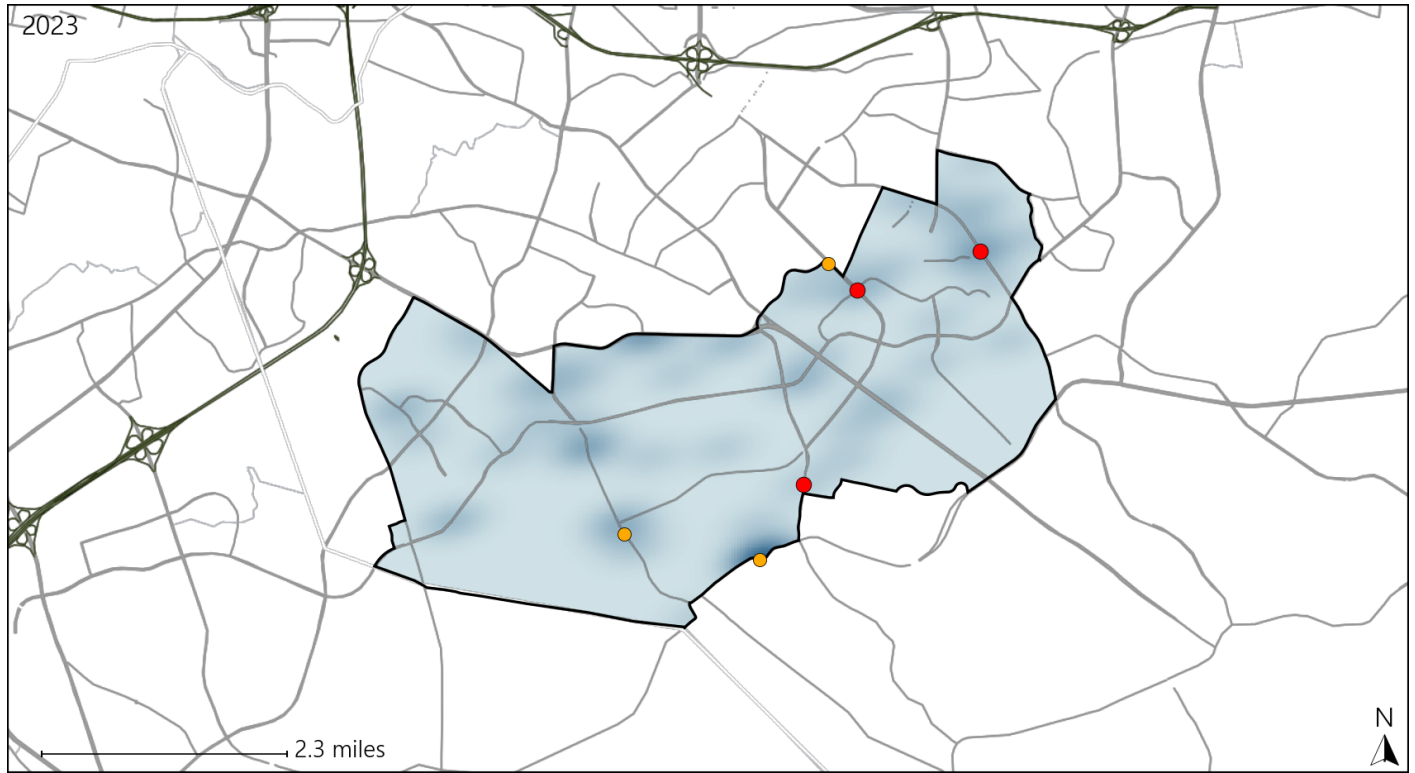


Available Crash Data - Calendar Year (CY)	CY 2020	CY 2021	CY 2022	CY 2023
Total Crashes	680	739	712	682
Fatal Crashes	2	1	3	4
Injury Crashes	198	274	221	239
Alcohol-Related Fatal Crashes	0	0	1	2
Percent of Alcohol-Related Fatal Crashes to Total Fatal Crashes	0%	0%	33%	50%
Alcohol-Related Injury Crashes	19	16	18	19
Percent of Alcohol-Related Injury Crashes to Total Injury Crashes	10%	6%	8%	8%

Virginia House District 96 Speed Crash Statistics

Report Generated May, 2024

	Count	Highest Time Period(s)	Highest Day(s)	Highest Month(s)
Fatal Crashes	3	6:00pm - 8:59pm	Monday • Saturday	September
Resulting Fatalities	3	9:00am - 11:59am (66%)	(66%)	(67%)
Serious Injury Crashes	3	3:00am - 5:59am 3:00pm - 5:59pm (66%)	Friday • Saturday (66%)	April • December (66%)



House District 96 Speed-Related Crashes

Interstate Crashes Non-interstate Crashes
 ● Fatal ● Fatal
 ⊕ Serious Injury ⊕ Serious Injury

The blue gradient represents the density of all speed-related crashes.

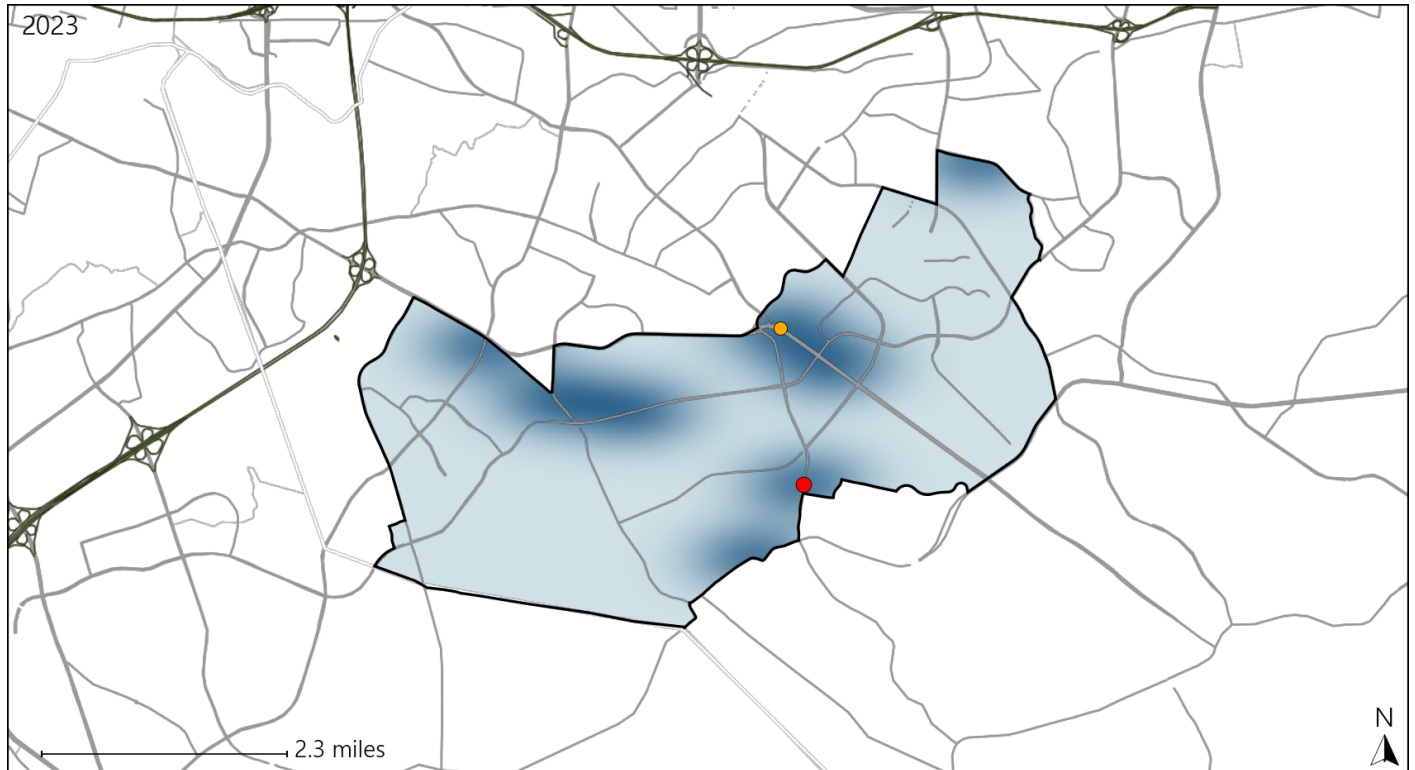


Available Crash Data - Calendar Year (CY)	CY 2020	CY 2021	CY 2022	CY 2023
Total Crashes	680	739	712	682
Fatal Crashes	2	1	3	4
Injury Crashes	198	274	221	239
Speed-Related Fatal Crashes	1	0	2	3
Percent of Speed-Related Fatal Crashes to Total Fatal Crashes	50%	0%	67%	75%
Speed-Related Injury Crashes	23	13	36	24
Percent of Speed-Related Injury Crashes to Total Injury Crashes	12%	5%	16%	10%

Virginia House District 96 Unrestrained Crash Statistics

Report Generated May, 2024

	Count	Highest Time Period(s)	Highest Day(s)	Highest Month(s)
Fatal Crashes	1	Midnight - 2:59am	Saturday	September
Unrestrained Fatalities	1	(100%)	(100%)	(100%)
Serious Injury Crashes	1	3:00am - 5:59am	Saturday	December
		(100%)	(100%)	(100%)



House District 96 Unrestrained-Related Crashes

Interstate Crashes

- Fatal
- Serious Injury

Non-interstate Crashes

- Fatal
- Serious Injury

The blue gradient represents the density of all unrestrained-related crashes.

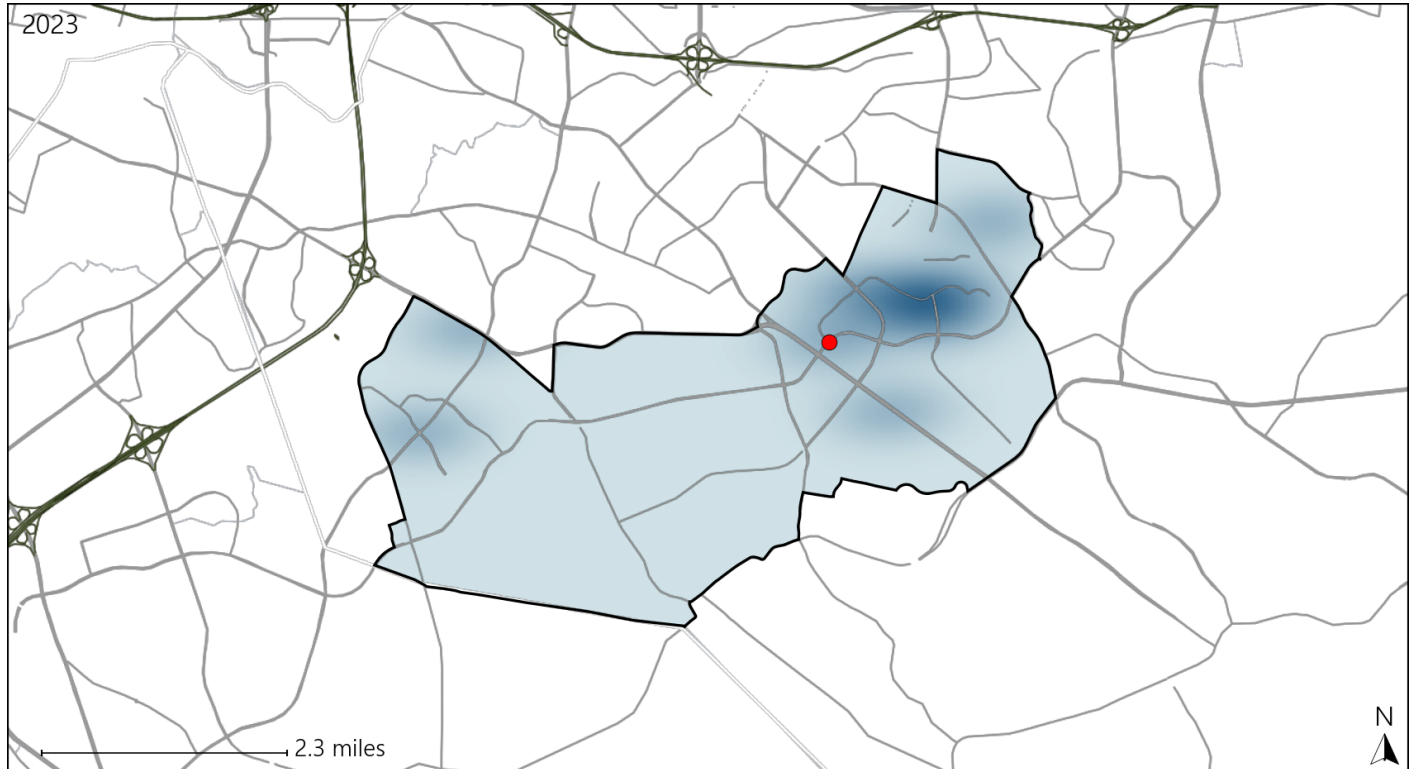


Available Crash Data - Calendar Year (CY)	CY 2020	CY 2021	CY 2022	CY 2023
Total Crashes	680	739	712	682
Fatalities	2	1	3	4
Injuries	353	485	369	397
Unrestrained Fatalities	1	0	1	1
Percent of Unrestrained Fatalities to Total Fatalities	50%	0%	33%	25%
Unrestrained Injuries	15	14	11	7
Percent of Unrestrained Injuries to Total Injuries	4%	3%	3%	2%

Virginia House District 96 Pedestrian Crash Statistics

Report Generated May, 2024

	Count	Highest Time Period(s)	Highest Day(s)	Highest Month(s)
Fatal Crashes	1	6:00pm - 8:59pm	Monday	October
Pedestrian Fatalities	1	(100%)	(100%)	(100%)
Serious Injury Crashes	0	-	-	-



House District 96 Pedestrian-Related Crashes

Interstate Crashes

Non-interstate Crashes

- Fatal
- Serious Injury

- Fatal
- Serious Injury

The blue gradient represents the density of all pedestrian-related crashes.

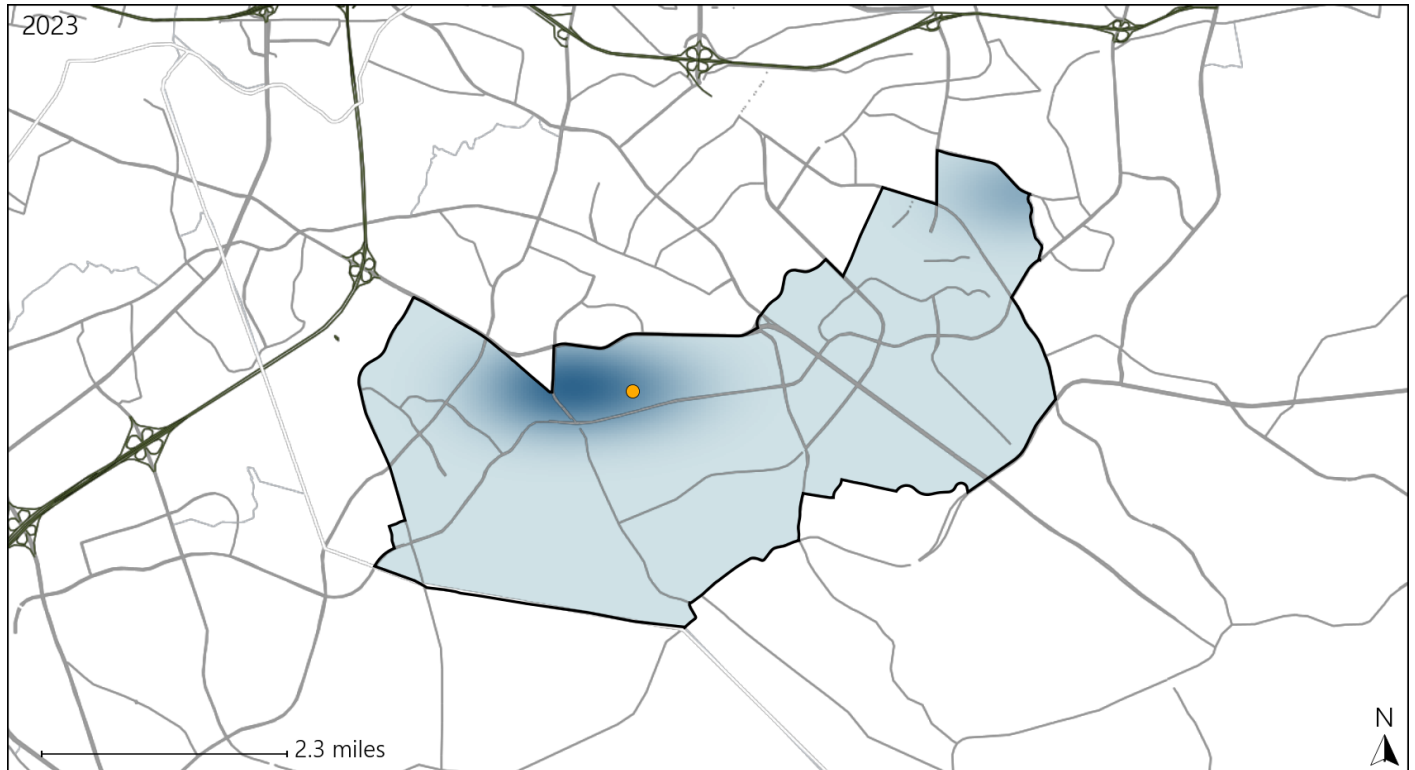


Available Crash Data - Calendar Year (CY)	CY 2020	CY 2021	CY 2022	CY 2023
Total Crashes	680	739	712	682
Fatal Crashes	2	1	3	4
Injury Crashes	198	274	221	239
Pedestrian-Related Fatal Crashes	0	0	0	1
Percent of Pedestrian-Related Fatal Crashes to Total Fatal Crashes	0%	0%	0%	25%
Pedestrian-Related Injury Crashes	5	14	5	8
Percent of Pedestrian-Related Injury Crashes to Total Injury Crashes	3%	5%	2%	3%

Virginia House District 96 Bicycle Crash Statistics

Report Generated May, 2024

	Count	Highest Time Period(s)	Highest Day(s)	Highest Month(s)
Fatal Crashes	0	-	-	-
Bicycle Fatalities	0	-	-	-
Serious Injury Crashes	1	6:00am - 8:59am (100%)	Saturday (100%)	December (100%)



House District 96 Bicycle-Related Crashes

Interstate Crashes

- Fatal
- Serious Injury

Non-interstate Crashes

- Fatal
- Serious Injury

The blue gradient represents the density of all bicycle-related crashes.

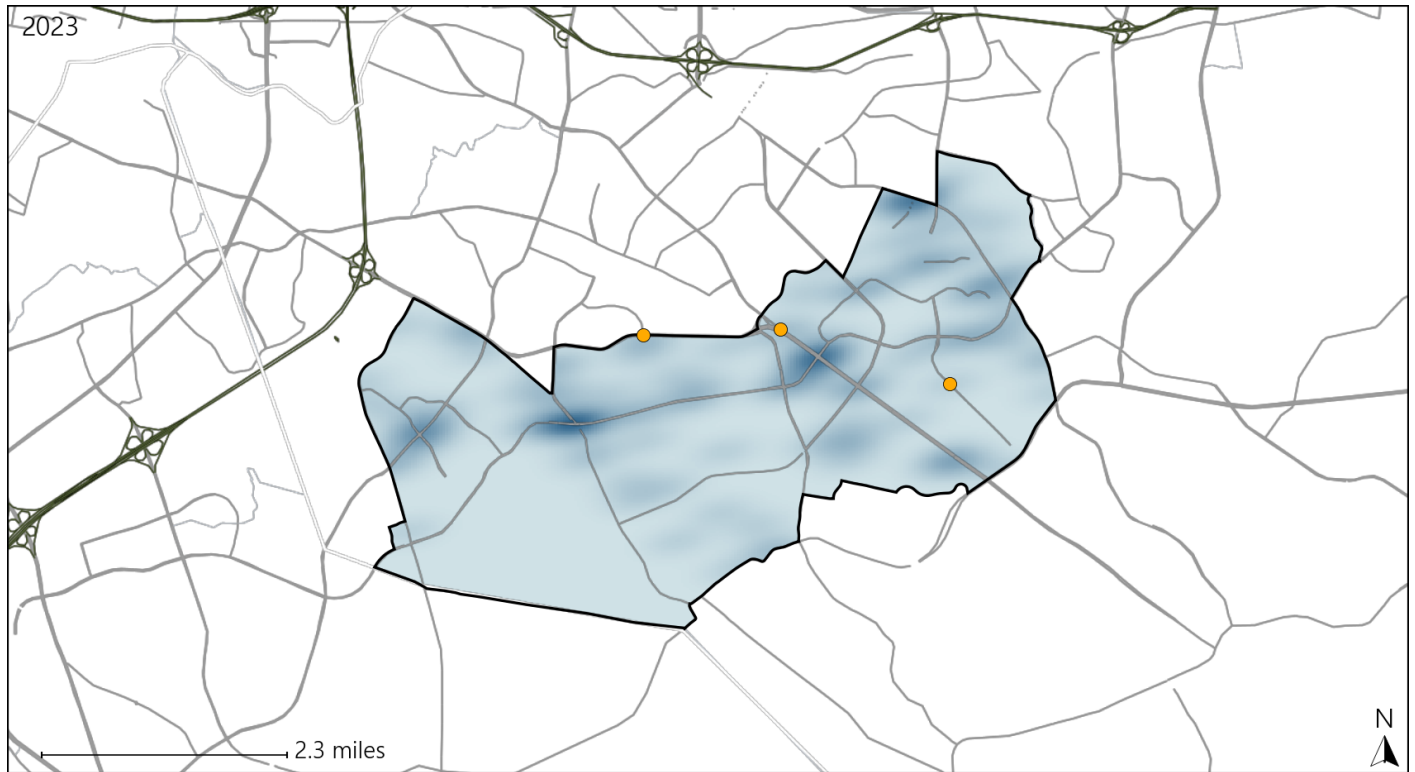


Available Crash Data - Calendar Year (CY)	CY 2020	CY 2021	CY 2022	CY 2023
Total Crashes	680	739	712	682
Fatal Crashes	2	1	3	4
Injury Crashes	198	274	221	239
Bicycle-Related Fatal Crashes	1	0	0	0
Percent of Bicycle-Related Fatal Crashes to Total Fatal Crashes	50%	0%	0%	0%
Bicycle-Related Injury Crashes	3	4	9	4
Percent of Bicycle-Related Injury Crashes to Total Injury Crashes	2%	1%	4%	2%

Virginia House District 96 Distracted Driving Crash Statistics

Report Generated May, 2024

	Count	Highest Time Period(s)	Highest Day(s)	Highest Month(s)
Fatal Crashes	0	-	-	-
Resulting Fatalities	0	-	-	-
Serious Injury Crashes	3	3:00am - 5:59am 9:00am - 11:59am (66%)	Saturday (67%)	December • June (66%)



House District 96 Distracted Driving-Related Crashes

- | | |
|--------------------|------------------------|
| Interstate Crashes | Non-interstate Crashes |
| ● Fatal | ● Fatal |
| ⊕ Serious Injury | ● Serious Injury |

The blue gradient represents the density of all distracted driving-related crashes.



Available Crash Data - Calendar Year (CY)	CY 2020	CY 2021	CY 2022	CY 2023
Total Crashes	680	739	712	682
Fatal Crashes	2	1	3	4
Injury Crashes	198	274	221	239
Distracted Driving-Related Fatal Crashes	0	0	0	0
Percent of Distracted Driving-Related Fatal Crashes to Total Fatal Crashes	0%	0%	0%	0%
Distracted Driving-Related Injury Crashes	40	45	44	38
Percent of Distracted Driving-Related Injury Crashes to Total Injury Crashes	20%	16%	20%	16%