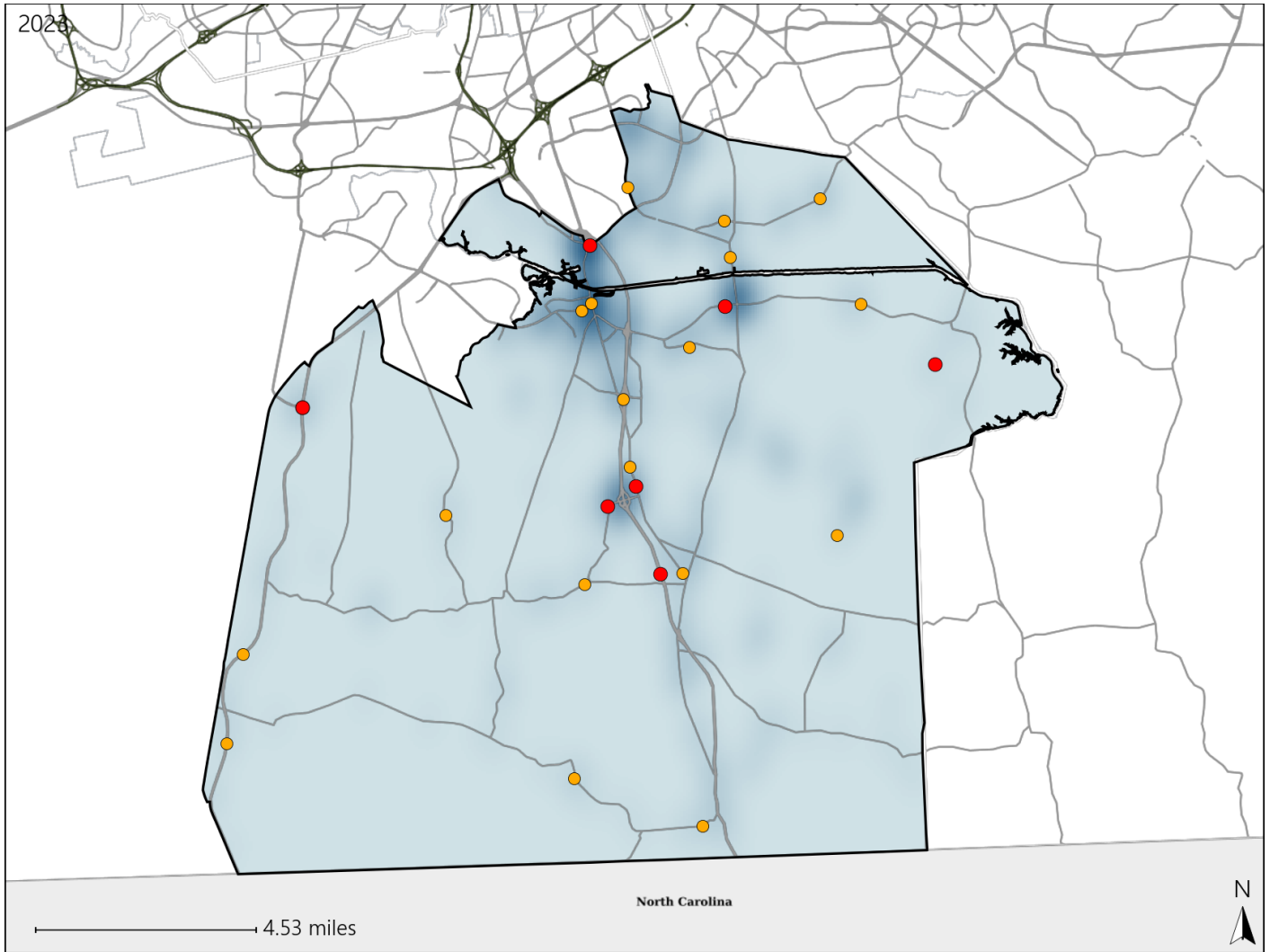


Virginia House District 90 Crash Statistics

Report Generated May, 2024

	Count	Highest Time Period(s)	Highest Day(s)	Highest Month(s)
Fatal Crashes	8	9:00pm - 11:59pm	Monday	October
Resulting Fatalities	8	(38%)	(38%)	(38%)
Serious Injury Crashes	18	3:00pm - 5:59pm	Friday • Wednesday	February
		(39%)	(44%)	(22%)



House District 90 Crashes

Interstate Crashes

- Fatal
- Serious Injury

Non-interstate Crashes

- Fatal
- Serious Injury

The blue gradient represents the density of all crashes.

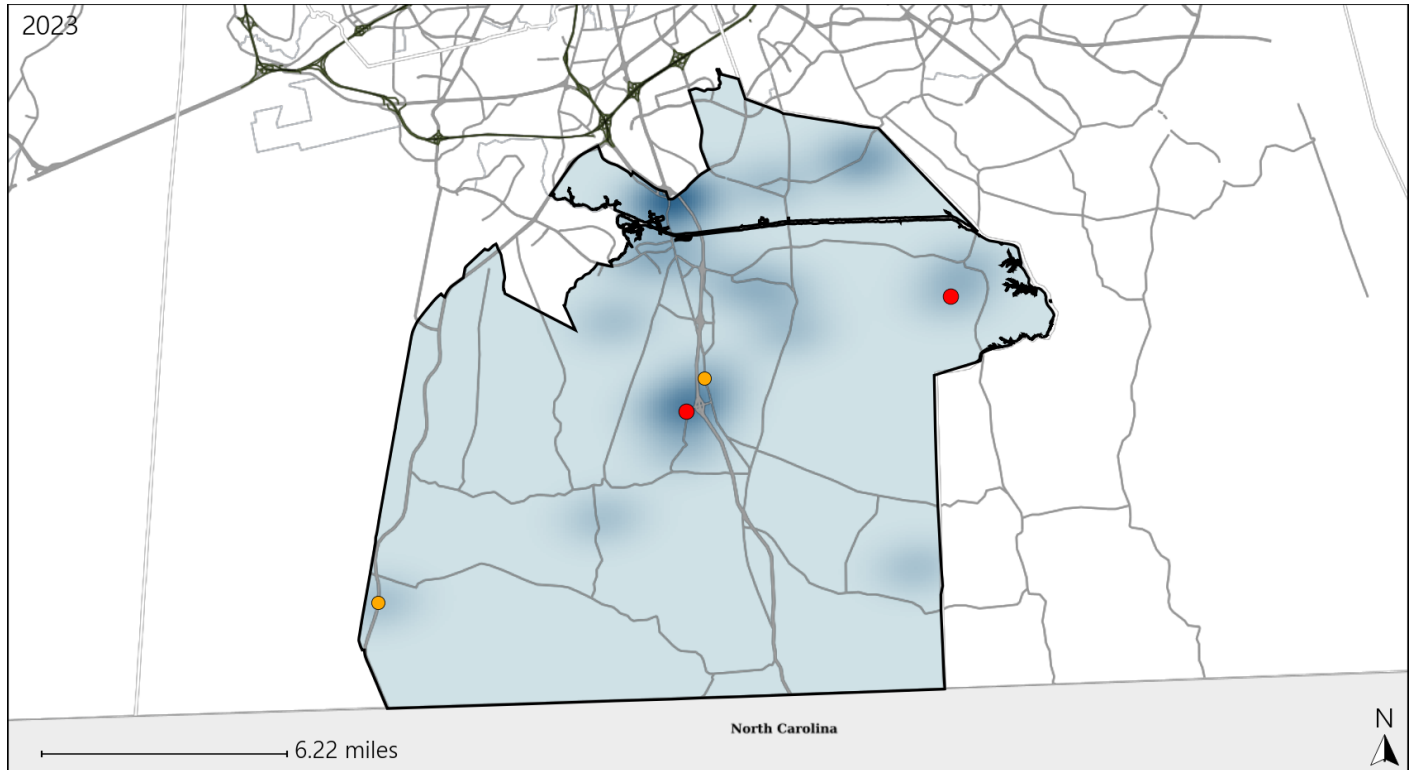


Available Crash Data - Calendar Year (CY)	CY 2020	CY 2021	CY 2022	CY 2023
Total Crashes	418	478	578	517
Fatal Crashes	1	4	2	8
Injury Crashes	155	186	234	199

Virginia House District 90 Alcohol Crash Statistics

Report Generated May, 2024

	Count	Highest Time Period(s)	Highest Day(s)	Highest Month(s)
Fatal Crashes	2	9:00pm - 11:59pm	Saturday • Tuesday	December • October
Resulting Fatalities	2	(100%)	(100%)	(100%)
Serious Injury Crashes	2	9:00pm - 11:59pm	Friday • Thursday	February • July
		(100%)	(100%)	(100%)




House District 90 Alcohol-Related Crashes


Interstate Crashes

Non-interstate Crashes

 Fatal

 Fatal

 Serious Injury

 Serious Injury

The blue gradient represents the density of all alcohol-related crashes.

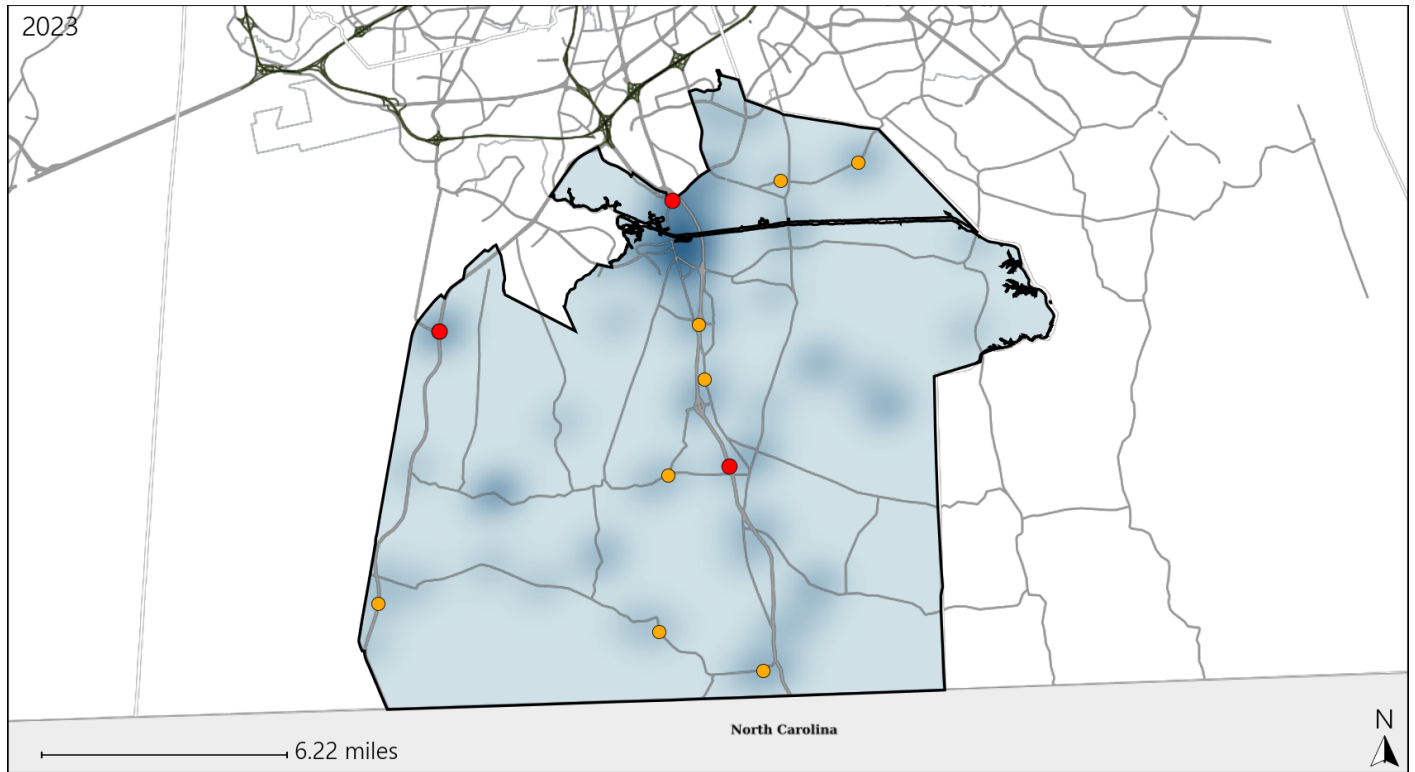


Available Crash Data - Calendar Year (CY)	CY 2020	CY 2021	CY 2022	CY 2023
Total Crashes	418	478	578	517
Fatal Crashes	1	4	2	8
Injury Crashes	155	186	234	199
Alcohol-Related Fatal Crashes	0	2	0	2
Percent of Alcohol-Related Fatal Crashes to Total Fatal Crashes	0%	50%	0%	25%
Alcohol-Related Injury Crashes	11	15	5	11
Percent of Alcohol-Related Injury Crashes to Total Injury Crashes	7%	8%	2%	6%

Virginia House District 90 Speed Crash Statistics

Report Generated May, 2024

	Count	Highest Time Period(s)	Highest Day(s)	Highest Month(s)
Fatal Crashes	4	3:00am - 5:59am	Monday	January • May
Resulting Fatalities	4	(50%)	(50%)	(50%)
Serious Injury Crashes	8	3:00pm - 5:59pm 6:00pm - 8:59pm	Friday • Sunday	February
		(50%)	(50%)	(38%)



House District 90 Speed-Related Crashes

Interstate Crashes

Non-interstate Crashes

● Fatal

● Fatal

⊕ Serious Injury

⊕ Serious Injury

The blue gradient represents the density of all speed-related crashes.

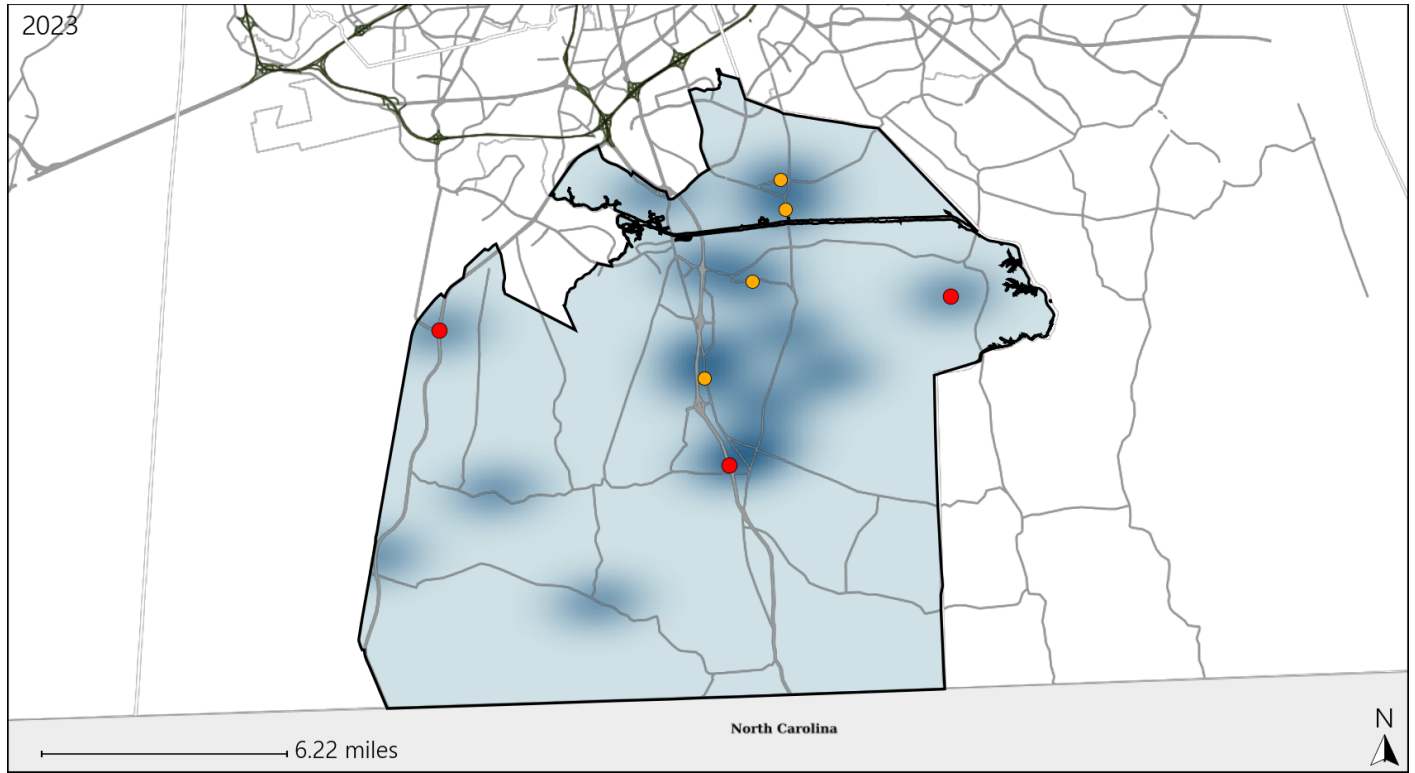


Available Crash Data - Calendar Year (CY)	CY 2020	CY 2021	CY 2022	CY 2023
Total Crashes	418	478	578	517
Fatal Crashes	1	4	2	8
Injury Crashes	155	186	234	199
Speed-Related Fatal Crashes	0	2	1	4
Percent of Speed-Related Fatal Crashes to Total Fatal Crashes	0%	50%	50%	50%
Speed-Related Injury Crashes	32	34	43	31
Percent of Speed-Related Injury Crashes to Total Injury Crashes	21%	18%	18%	16%

Virginia House District 90 Unrestrained Crash Statistics

Report Generated May, 2024

	Count	Highest Time Period(s)	Highest Day(s)	Highest Month(s)
Fatal Crashes	3	3:00am - 5:59am	Friday • Saturday	January • October
Unrestrained Fatalities	3	9:00am - 11:59am (66%)	(66%)	(66%)
Serious Injury Crashes	4	3:00pm - 5:59pm	Friday • Sunday	February
		6:00pm - 8:59pm (50%)	(50%)	(50%)



House District 90 Unrestrained-Related Crashes

Interstate Crashes

Non-interstate Crashes

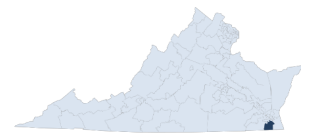
● Fatal

● Fatal

● Serious Injury

● Serious Injury

The blue gradient represents the density of all unrestrained-related crashes.

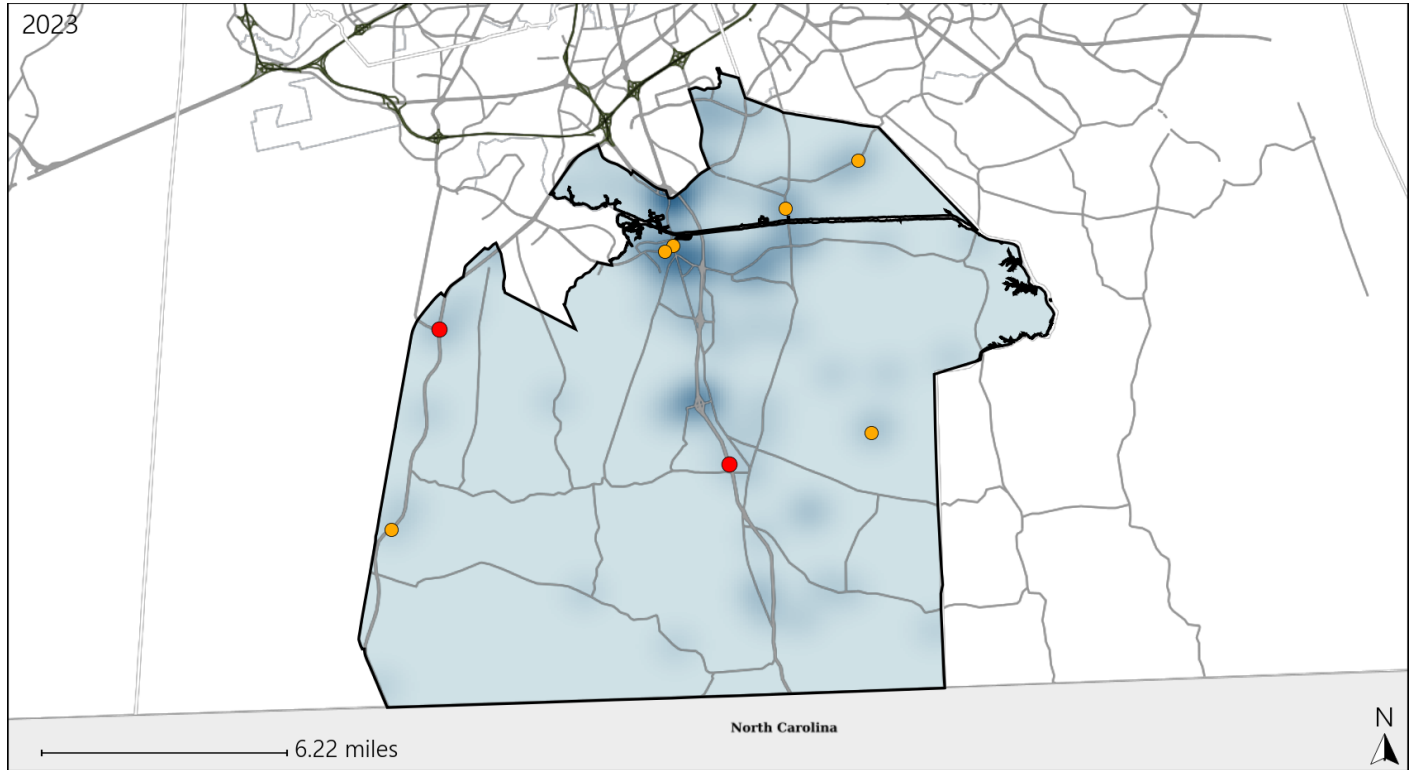


Available Crash Data - Calendar Year (CY)	CY 2020	CY 2021	CY 2022	CY 2023
Total Crashes	418	478	578	517
Fatalities	1	4	2	8
Injuries	233	310	374	312
Unrestrained Fatalities	0	1	0	3
Percent of Unrestrained Fatalities to Total Fatalities	0%	25%	0%	38%
Unrestrained Injuries	17	10	15	17
Percent of Unrestrained Injuries to Total Injuries	7%	3%	4%	5%

Virginia House District 90 Distracted Driving Crash Statistics

Report Generated May, 2024

	Count	Highest Time Period(s)	Highest Day(s)	Highest Month(s)
Fatal Crashes	2	3:00am - 5:59am	Friday - Thursday	January - September
Resulting Fatalities	2	9:00am - 11:59am (100%)	(100%)	(100%)
Serious Injury Crashes	6	3:00pm - 5:59pm (67%)	Wednesday (67%)	February (33%)



House District 90 Distracted Driving-Related Crashes

- | | |
|--|--|
| Interstate Crashes | Non-interstate Crashes |
| ● Fatal | ● Fatal |
| ● Serious Injury | ● Serious Injury |

The blue gradient represents the density of all distracted driving-related crashes.



Available Crash Data - Calendar Year (CY)	CY 2020	CY 2021	CY 2022	CY 2023
Total Crashes	418	478	578	517
Fatal Crashes	1	4	2	8
Injury Crashes	155	186	234	199
Distracted Driving-Related Fatal Crashes	0	0	0	2
Percent of Distracted Driving-Related Fatal Crashes to Total Fatal Crashes	0%	0%	0%	25%
Distracted Driving-Related Injury Crashes	39	45	43	44
Percent of Distracted Driving-Related Injury Crashes to Total Injury Crashes	25%	24%	18%	22%