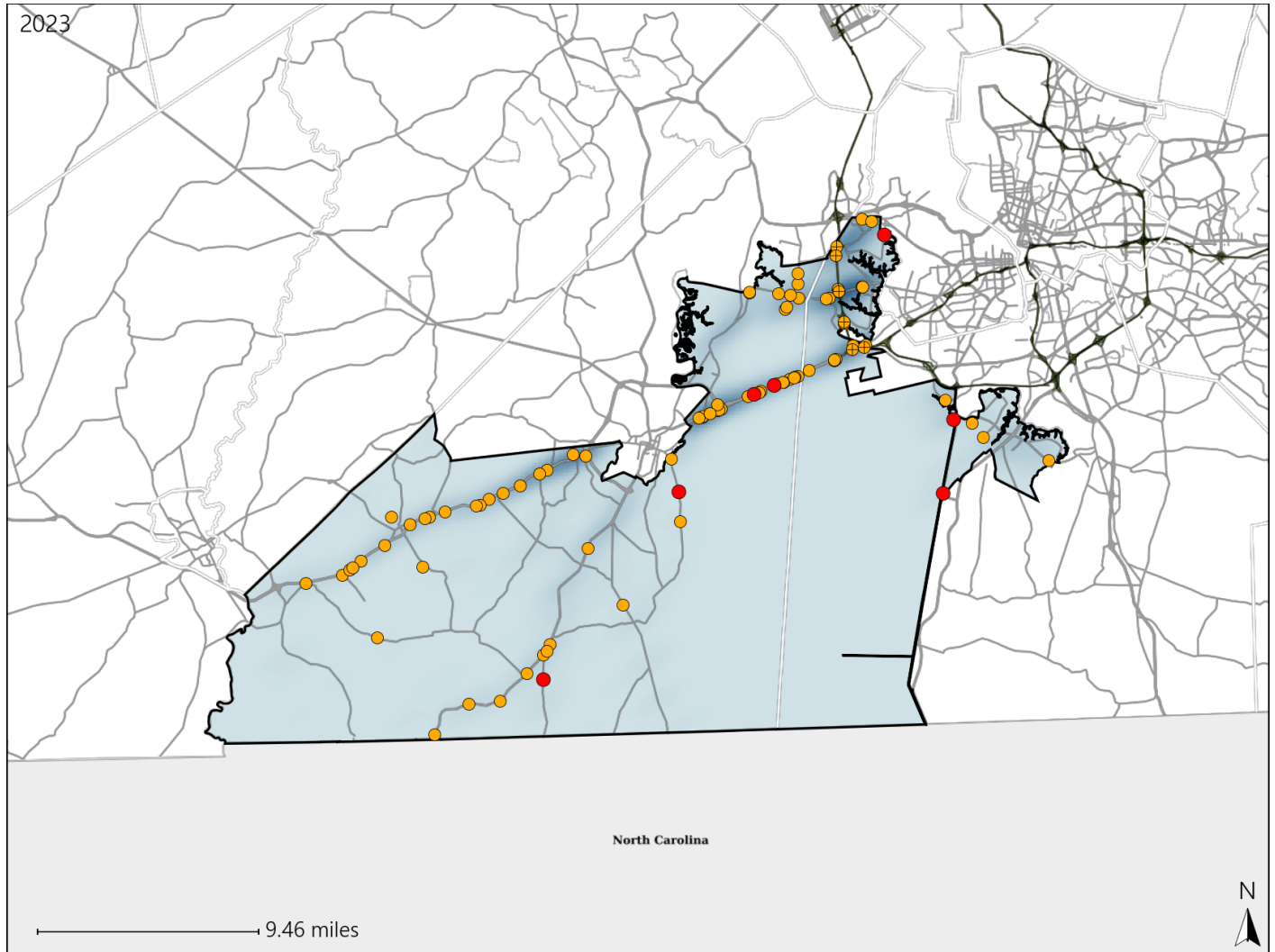


Virginia House District 89 Crash Statistics

Report Generated May, 2024

	Count	Highest Time Period(s)	Highest Day(s)	Highest Month(s)
Fatal Crashes	7	6:00pm - 8:59pm	Sunday	September
Resulting Fatalities	9	(57%)	(43%)	(29%)
Serious Injury Crashes	91	3:00pm - 5:59pm	Friday • Wednesday	May
		(23%)	(32%)	(12%)



House District 89 Crashes

Interstate Crashes

- Fatal
- Serious Injury

Non-interstate Crashes

- Fatal
- Serious Injury

The blue gradient represents the density of all crashes.

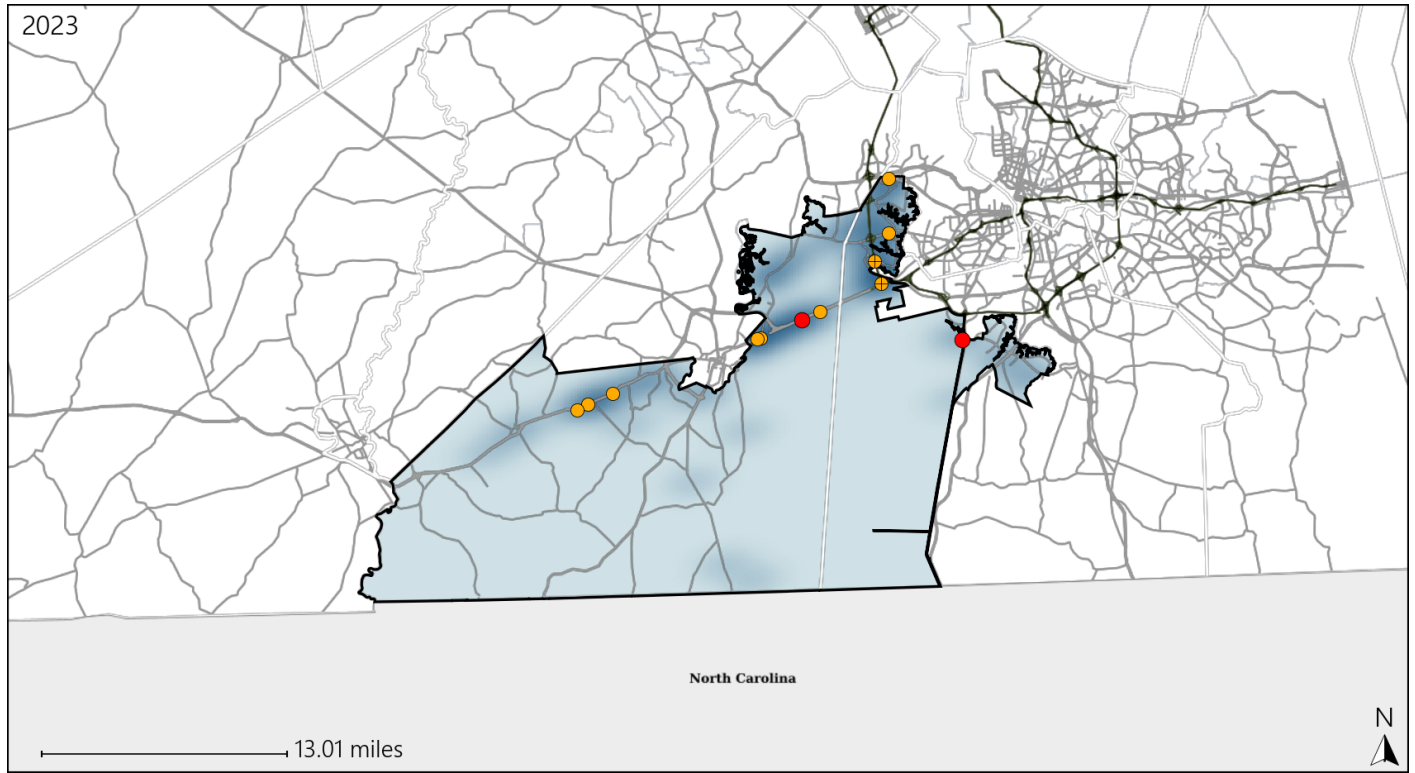


Available Crash Data - Calendar Year (CY)	CY 2020	CY 2021	CY 2022	CY 2023
Total Crashes	972	1108	1169	1191
Fatal Crashes	9	10	11	7
Injury Crashes	402	515	507	519

Virginia House District 89 Alcohol Crash Statistics

Report Generated May, 2024

	Count	Highest Time Period(s)	Highest Day(s)	Highest Month(s)
Fatal Crashes	2	6:00pm - 8:59pm	Sunday • Wednesday	April • September
Resulting Fatalities	3	Midnight - 2:59am (100%)	(100%)	(100%)
Serious Injury Crashes	11	3:00am - 5:59am 6:00pm - 8:59pm (54%)	Friday • Saturday (54%)	May (27%)



House District 89 Alcohol-Related Crashes

Interstate Crashes

Non-interstate Crashes

- Fatal
- Serious Injury

- Fatal
- Serious Injury

The blue gradient represents the density of all alcohol-related crashes.

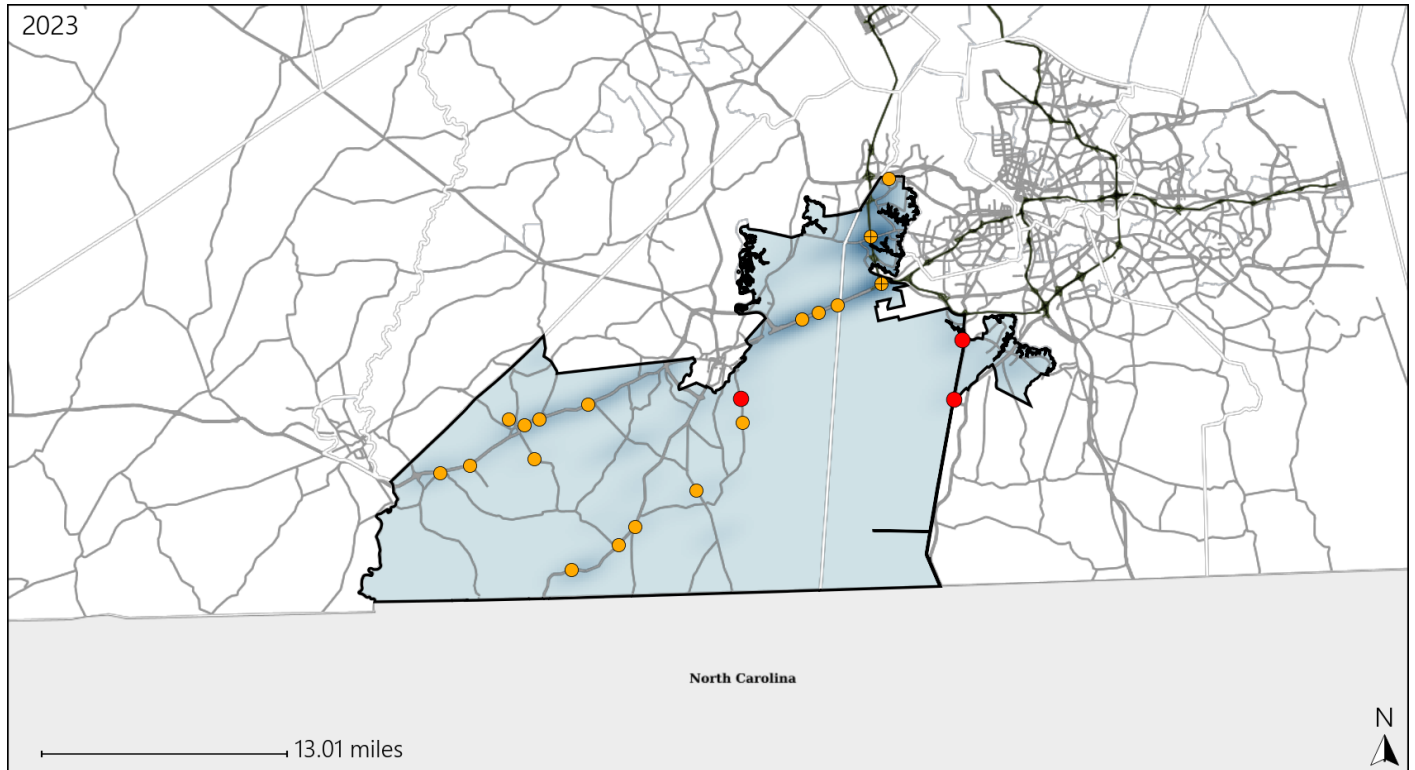


Available Crash Data - Calendar Year (CY)	CY 2020	CY 2021	CY 2022	CY 2023
Total Crashes	972	1108	1169	1191
Fatal Crashes	9	10	11	7
Injury Crashes	402	515	507	519
Alcohol-Related Fatal Crashes	1	1	4	2
Percent of Alcohol-Related Fatal Crashes to Total Fatal Crashes	11%	10%	36%	29%
Alcohol-Related Injury Crashes	35	25	24	34
Percent of Alcohol-Related Injury Crashes to Total Injury Crashes	9%	5%	5%	7%

Virginia House District 89 Speed Crash Statistics

Report Generated May, 2024

	Count	Highest Time Period(s)	Highest Day(s)	Highest Month(s)
Fatal Crashes	3	6:00pm - 8:59pm	Sunday	April - February
Resulting Fatalities	3	(67%)	(67%)	(66%)
Serious Injury Crashes	18	9:00pm - 11:59pm	Friday	May
		(22%)	(28%)	(33%)



House District 89 Speed-Related Crashes

Interstate Crashes Non-interstate Crashes
 ● Fatal ● Fatal
 ⊕ Serious Injury ⊕ Serious Injury

The blue gradient represents the density of all speed-related crashes.

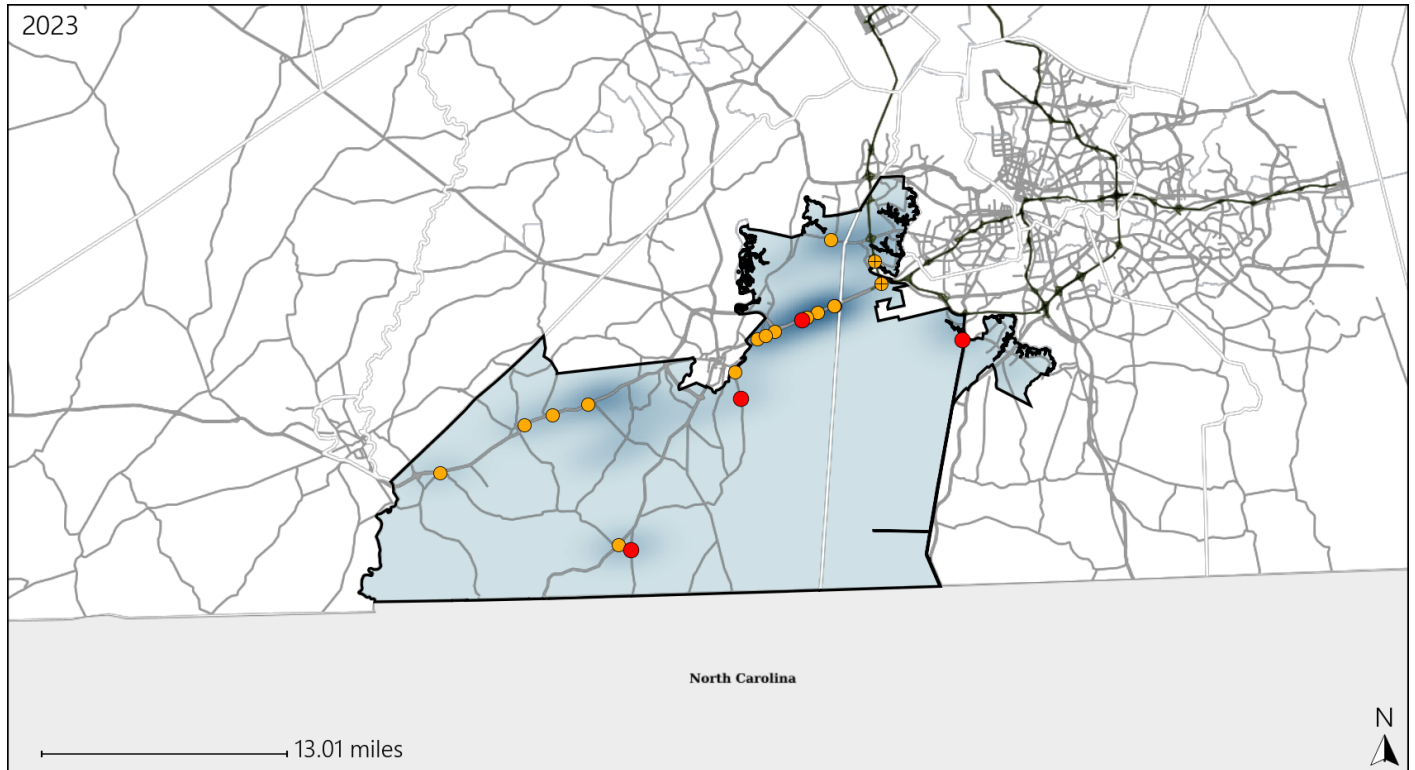


Available Crash Data - Calendar Year (CY)	CY 2020	CY 2021	CY 2022	CY 2023
Total Crashes	972	1108	1169	1191
Fatal Crashes	9	10	11	7
Injury Crashes	402	515	507	519
Speed-Related Fatal Crashes	4	4	2	3
Percent of Speed-Related Fatal Crashes to Total Fatal Crashes	44%	40%	18%	43%
Speed-Related Injury Crashes	67	92	96	97
Percent of Speed-Related Injury Crashes to Total Injury Crashes	17%	18%	19%	19%

Virginia House District 89 Unrestrained Crash Statistics

Report Generated May, 2024

	Count	Highest Time Period(s)	Highest Day(s)	Highest Month(s)
Fatal Crashes	4	6:00pm - 8:59pm	Sunday	September
Unrestrained Fatalities	4	(75%)	(50%)	(50%)
Serious Injury Crashes	17	3:00pm - 5:59pm	Tuesday	November
		(29%)	(24%)	(18%)



House District 89 Unrestrained-Related Crashes

Interstate Crashes

Non-interstate Crashes

- Fatal
- Serious Injury

- Fatal
- Serious Injury

The blue gradient represents the density of all unrestrained-related crashes.

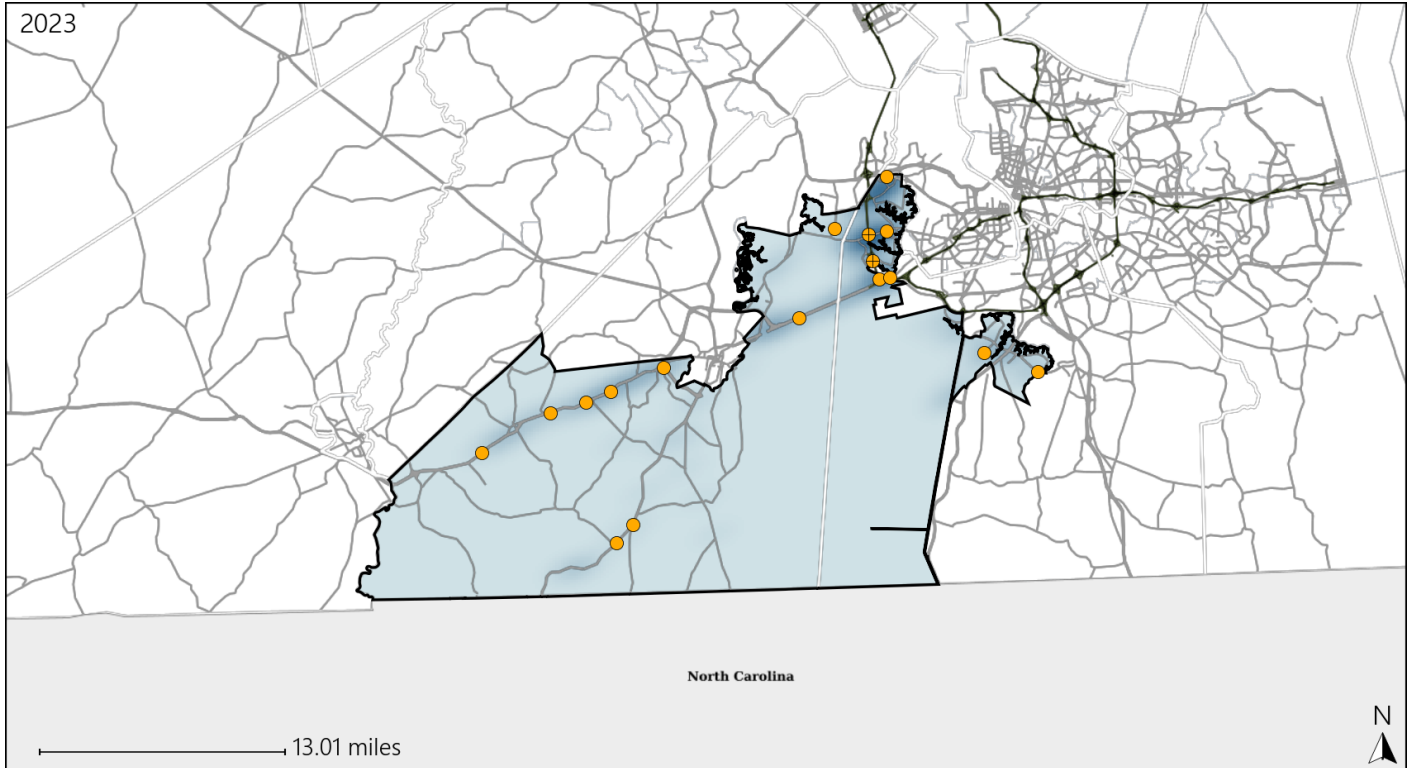


Available Crash Data - Calendar Year (CY)	CY 2020	CY 2021	CY 2022	CY 2023
Total Crashes	972	1108	1169	1191
Fatalities	9	10	11	9
Injuries	577	795	781	790
Unrestrained Fatalities	1	2	5	4
Percent of Unrestrained Fatalities to Total Fatalities	11%	20%	45%	44%
Unrestrained Injuries	31	48	41	50
Percent of Unrestrained Injuries to Total Injuries	5%	6%	5%	6%

Virginia House District 89 Distracted Driving Crash Statistics

Report Generated May, 2024

	Count	Highest Time Period(s)	Highest Day(s)	Highest Month(s)
Fatal Crashes	0	-	-	-
Resulting Fatalities	0	-	-	-
Serious Injury Crashes	17	3:00pm - 5:59pm (29%)	Wednesday (29%)	January - May (36%)



House District 89 Distracted Driving-Related Crashes

Interstate Crashes

- Fatal
- Serious Injury

Non-interstate Crashes

- Fatal
- Serious Injury

The blue gradient represents the density of all distracted driving-related crashes.



Available Crash Data - Calendar Year (CY)	CY 2020	CY 2021	CY 2022	CY 2023
Total Crashes	972	1108	1169	1191
Fatal Crashes	9	10	11	7
Injury Crashes	402	515	507	519
Distracted Driving-Related Fatal Crashes	1	2	2	0
Percent of Distracted Driving-Related Fatal Crashes to Total Fatal Crashes	11%	20%	18%	0%
Distracted Driving-Related Injury Crashes	76	84	77	83
Percent of Distracted Driving-Related Injury Crashes to Total Injury Crashes	19%	16%	15%	16%