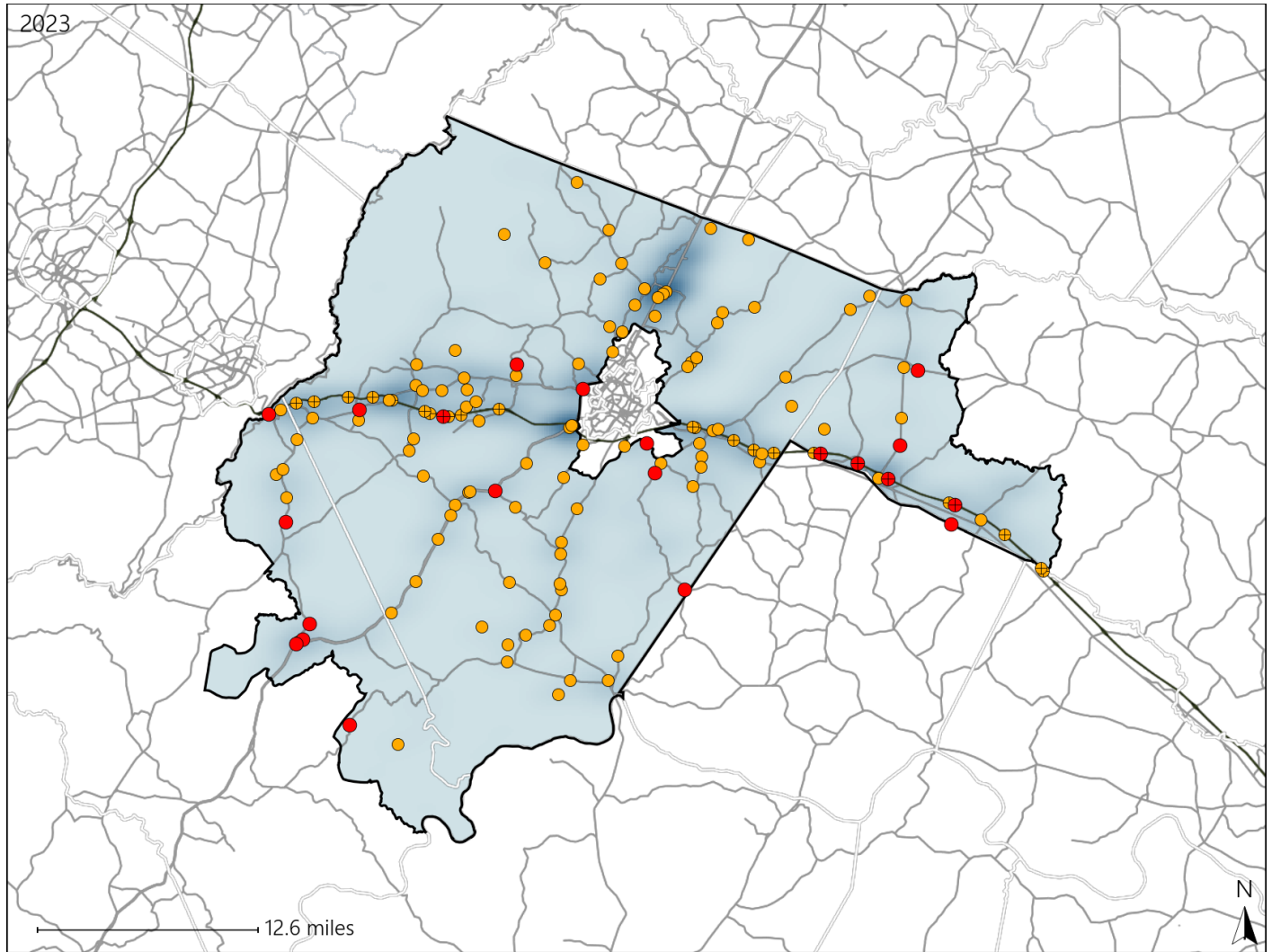


Virginia House District 55 Crash Statistics

Report Generated May, 2024

	Count	Highest Time Period(s)	Highest Day(s)	Highest Month(s)
Fatal Crashes	21	Midnight - 2:59am	Tuesday	August
Resulting Fatalities	22	(24%)	(24%)	(19%)
Serious Injury Crashes	123	3:00pm - 5:59pm	Thursday	March - October
		(20%)	(20%)	(24%)



House District 55 Crashes

Interstate Crashes

- Fatal
- Serious Injury

Non-interstate Crashes

- Fatal
- Serious Injury

The blue gradient represents the density of all crashes.

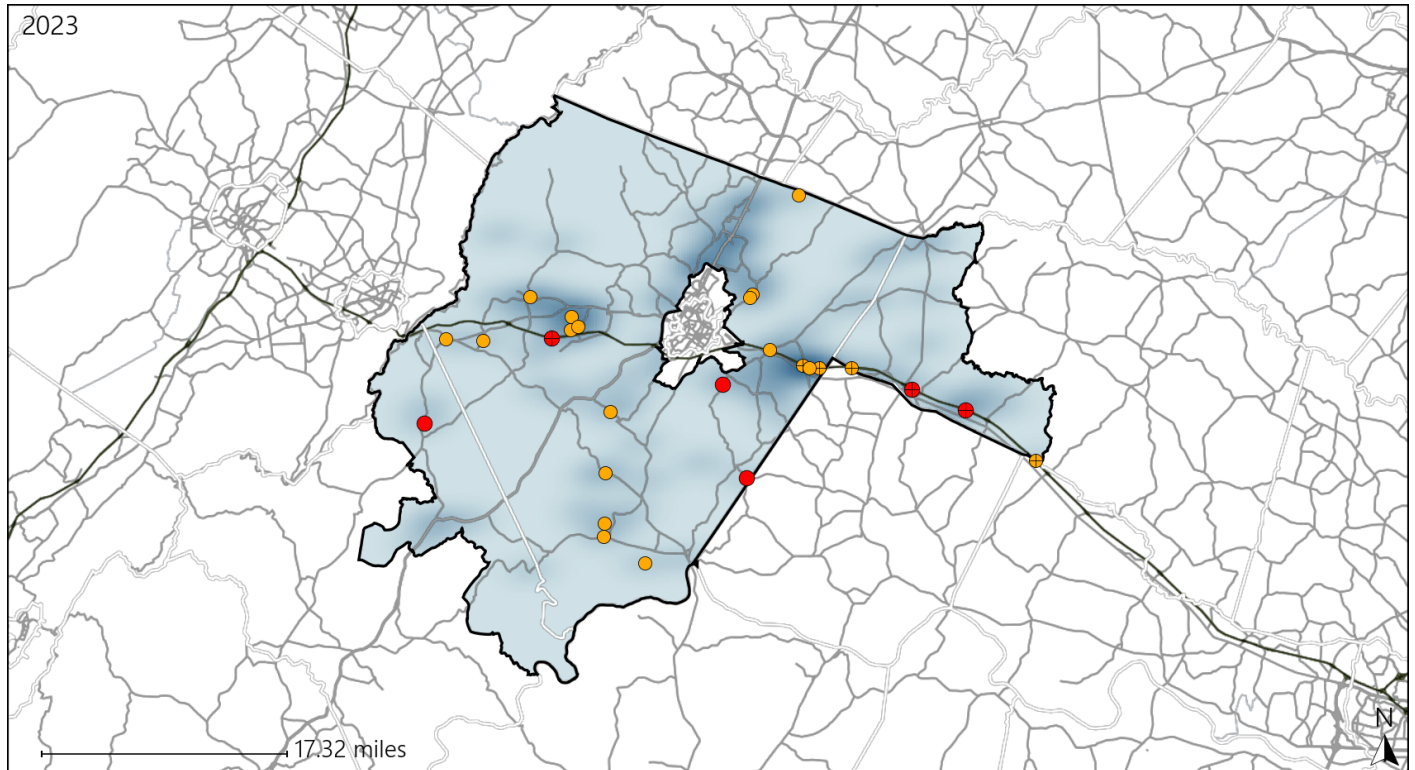


Available Crash Data - Calendar Year (CY)	CY 2020	CY 2021	CY 2022	CY 2023
Total Crashes	1481	1598	1675	1711
Fatal Crashes	11	18	16	21
Injury Crashes	653	721	848	866

Virginia House District 55 Alcohol Crash Statistics

Report Generated May, 2024

	Count	Highest Time Period(s)	Highest Day(s)	Highest Month(s)
Fatal Crashes	6	Midnight - 2:59am	Friday • Monday	January
Resulting Fatalities	6	(67%)	(34%)	(50%)
Serious Injury Crashes	20	9:00pm - 11:59pm	Sunday	March
		(40%)	(25%)	(20%)



House District 55 Alcohol-Related Crashes

Interstate Crashes Non-interstate Crashes
 ● Fatal ● Fatal
 ● Serious Injury ● Serious Injury

The blue gradient represents the density of all alcohol-related crashes.

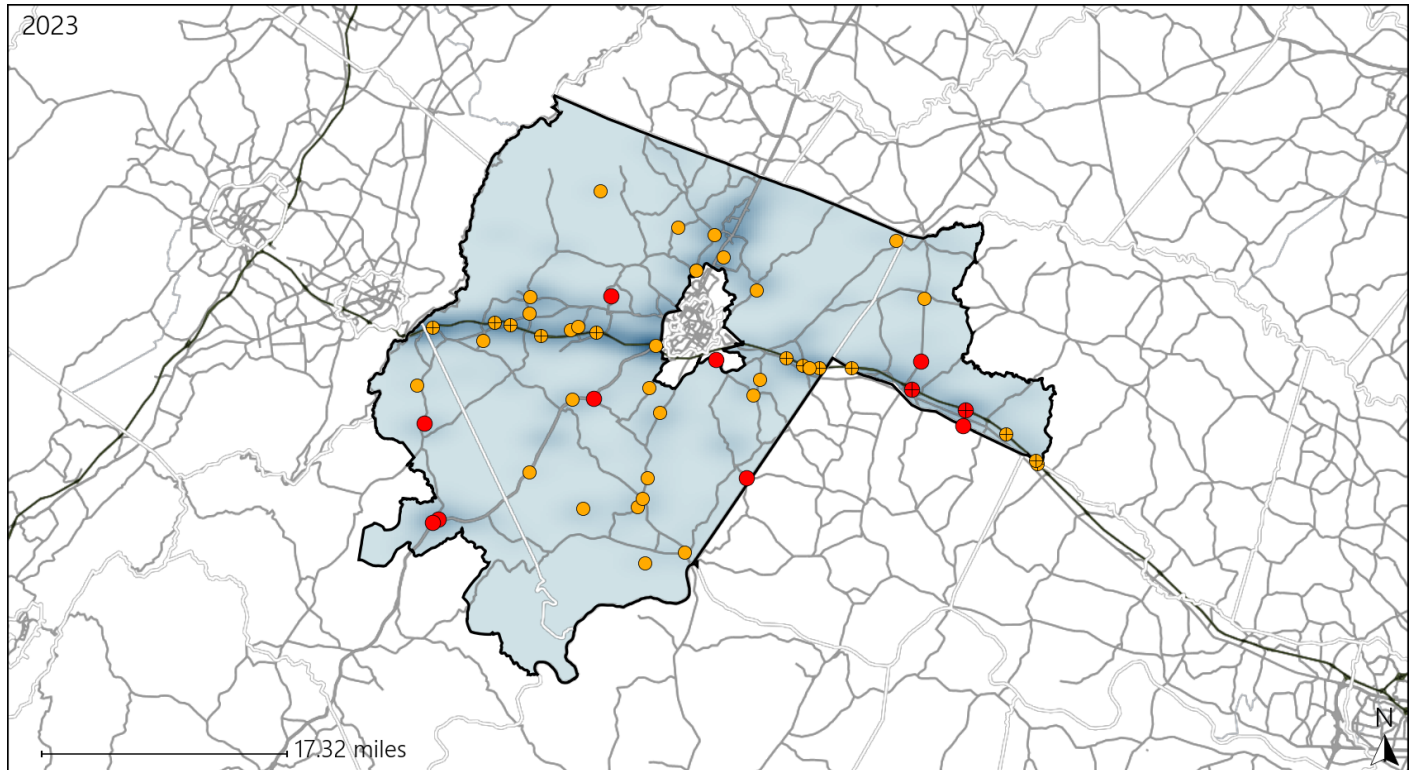


Available Crash Data - Calendar Year (CY)	CY 2020	CY 2021	CY 2022	CY 2023
Total Crashes	1481	1598	1675	1711
Fatal Crashes	11	18	16	21
Injury Crashes	653	721	848	866
Alcohol-Related Fatal Crashes	3	0	9	6
Percent of Alcohol-Related Fatal Crashes to Total Fatal Crashes	27%	0%	56%	29%
Alcohol-Related Injury Crashes	55	54	55	70
Percent of Alcohol-Related Injury Crashes to Total Injury Crashes	8%	7%	6%	8%

Virginia House District 55 Speed Crash Statistics

Report Generated May, 2024

	Count	Highest Time Period(s)	Highest Day(s)	Highest Month(s)
Fatal Crashes	11	Midnight - 2:59am	Tuesday	August • March
Resulting Fatalities	12	(45%)	(36%)	(54%)
Serious Injury Crashes	41	3:00pm - 5:59pm	Saturday	March
		(24%)	(24%)	(20%)



House District 55 Speed-Related Crashes

Interstate Crashes Non-interstate Crashes
 ● Fatal ● Fatal
 ⊕ Serious Injury ⊕ Serious Injury
 The blue gradient represents the density of all speed-related crashes.

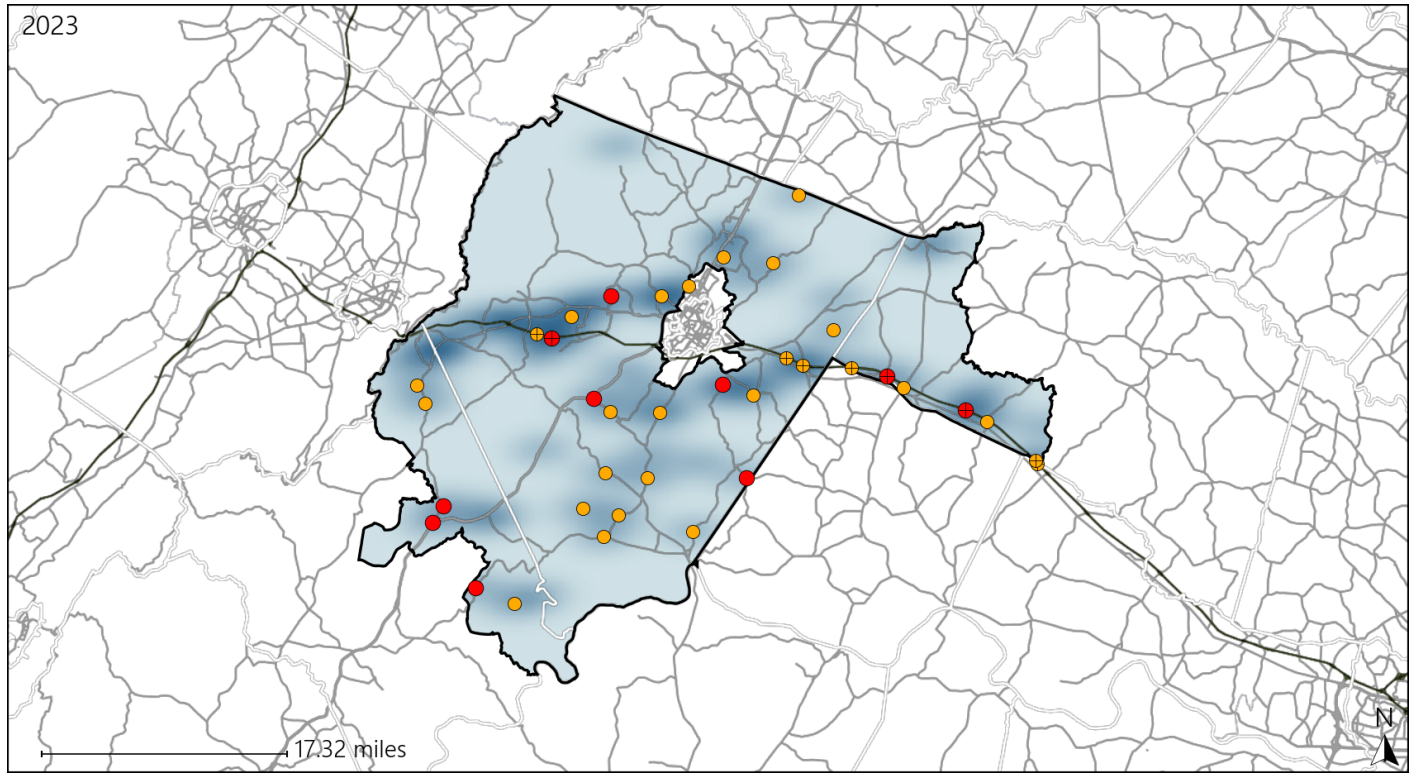


Available Crash Data - Calendar Year (CY)	CY 2020	CY 2021	CY 2022	CY 2023
Total Crashes	1481	1598	1675	1711
Fatal Crashes	11	18	16	21
Injury Crashes	653	721	848	866
Speed-Related Fatal Crashes	6	4	6	11
Percent of Speed-Related Fatal Crashes to Total Fatal Crashes	55%	22%	38%	52%
Speed-Related Injury Crashes	139	159	163	181
Percent of Speed-Related Injury Crashes to Total Injury Crashes	21%	22%	19%	21%

Virginia House District 55 Unrestrained Crash Statistics

Report Generated May, 2024

	Count	Highest Time Period(s)	Highest Day(s)	Highest Month(s)
Fatal Crashes	10	3:00pm - 5:59pm	Tuesday	December • January
Unrestrained Fatalities	11	Midnight - 2:59am (60%)	(30%)	(40%)
Serious Injury Crashes	27	6:00pm - 8:59pm 9:00pm - 11:59pm (38%)	Saturday • Thursday (52%)	November (22%)



House District 55 Unrestrained-Related Crashes

- | | |
|--------------------|------------------------|
| Interstate Crashes | Non-interstate Crashes |
| ● Fatal | ● Fatal |
| ⊕ Serious Injury | ⊕ Serious Injury |

The blue gradient represents the density of all unrestrained-related crashes.

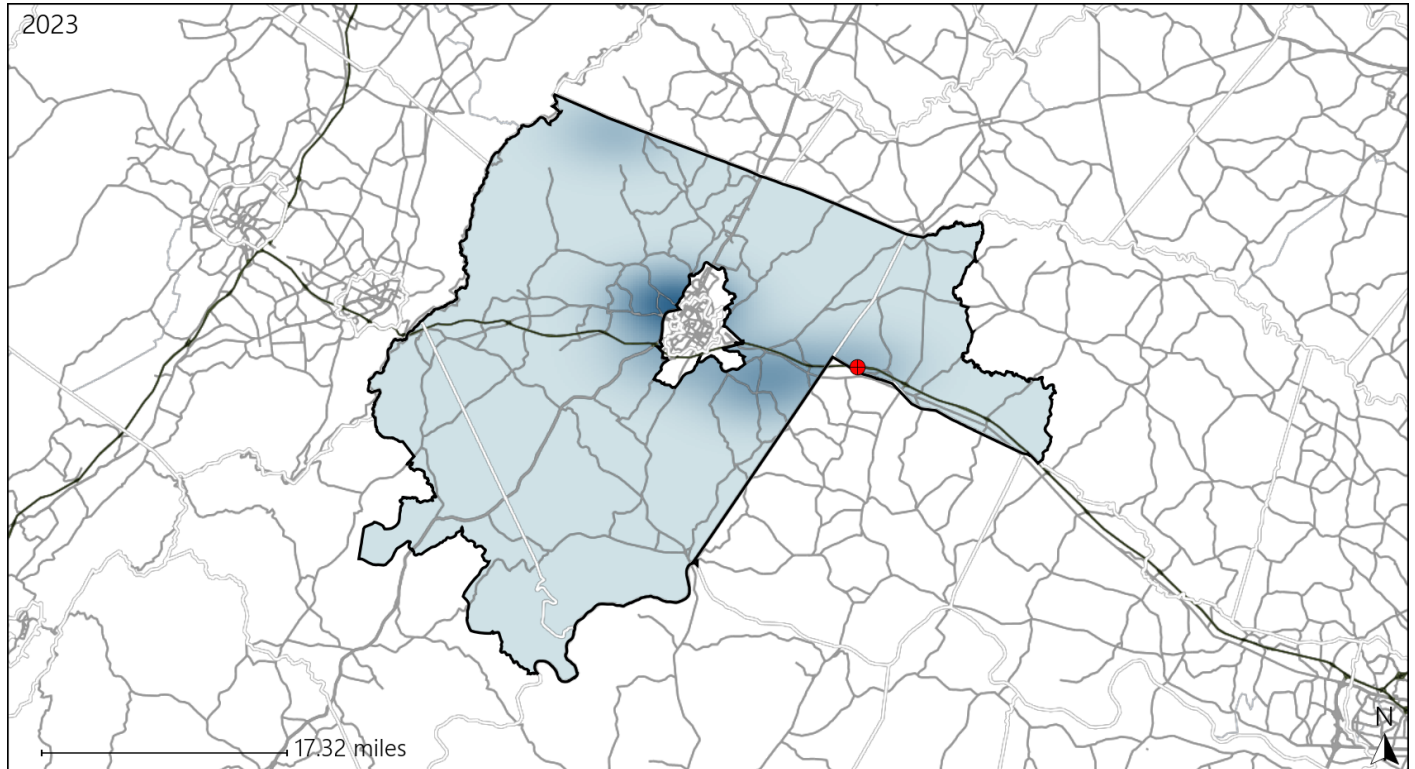


Available Crash Data - Calendar Year (CY)	CY 2020	CY 2021	CY 2022	CY 2023
Total Crashes	1481	1598	1675	1711
Fatalities	14	19	17	22
Injuries	912	1058	1283	1299
Unrestrained Fatalities	9	6	9	11
Percent of Unrestrained Fatalities to Total Fatalities	64%	32%	53%	50%
Unrestrained Injuries	72	78	74	71
Percent of Unrestrained Injuries to Total Injuries	8%	7%	6%	5%

Virginia House District 55 Pedestrian Crash Statistics

Report Generated May, 2024

	Count	Highest Time Period(s)	Highest Day(s)	Highest Month(s)
Fatal Crashes	1	6:00pm - 8:59pm	Sunday	December
Pedestrian Fatalities	1	(100%)	(100%)	(100%)
Serious Injury Crashes	0	-	-	-



House District 55 Pedestrian-Related Crashes

Interstate Crashes

Non-interstate Crashes

- Fatal
- Serious Injury

- Fatal
- Serious Injury

The blue gradient represents the density of all pedestrian-related crashes.

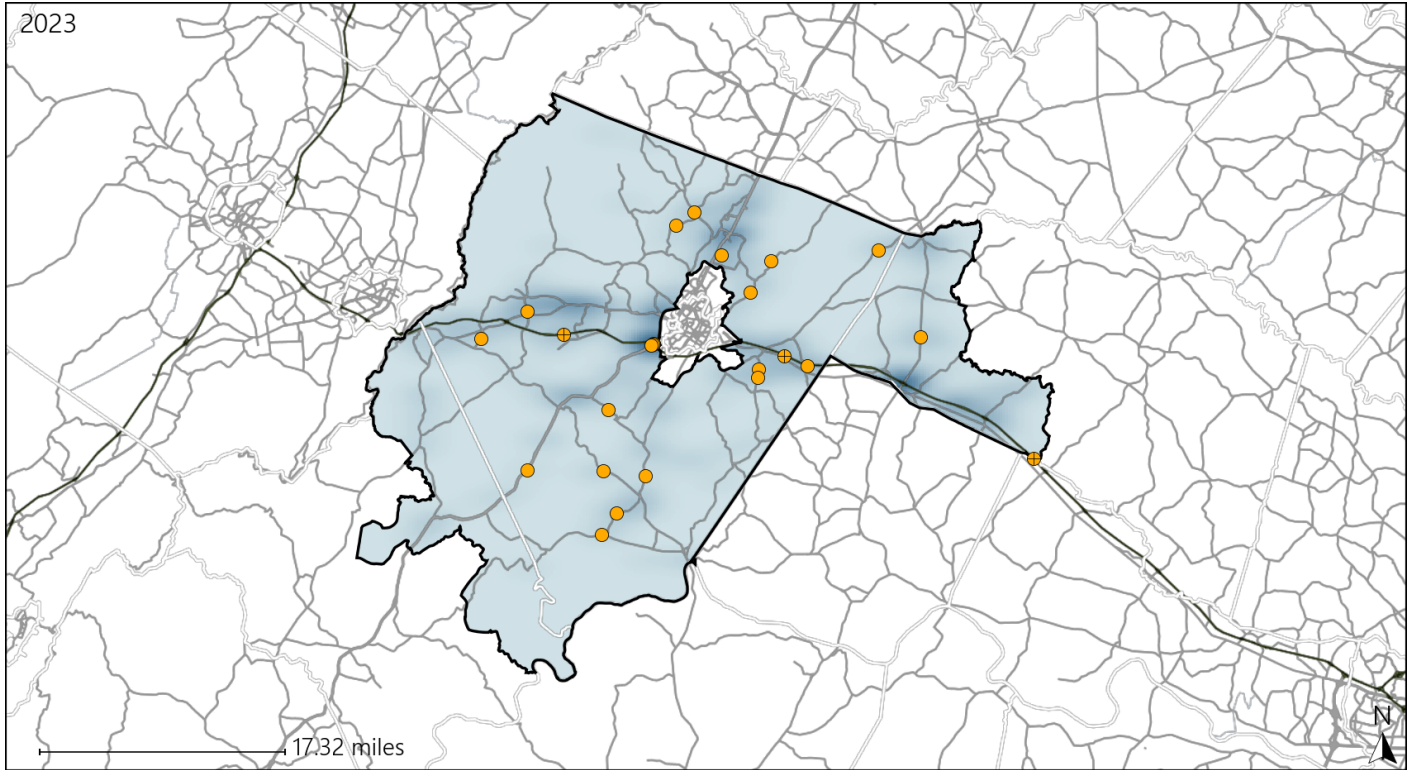


Available Crash Data - Calendar Year (CY)	CY 2020	CY 2021	CY 2022	CY 2023
Total Crashes	1481	1598	1675	1711
Fatal Crashes	11	18	16	21
Injury Crashes	653	721	848	866
Pedestrian-Related Fatal Crashes	1	1	1	1
Percent of Pedestrian-Related Fatal Crashes to Total Fatal Crashes	9%	6%	6%	5%
Pedestrian-Related Injury Crashes	2	3	6	7
Percent of Pedestrian-Related Injury Crashes to Total Injury Crashes	0%	0%	1%	1%

Virginia House District 55 Distracted Driving Crash Statistics

Report Generated May, 2024

	Count	Highest Time Period(s)	Highest Day(s)	Highest Month(s)
Fatal Crashes	0	-	-	-
Resulting Fatalities	0	-	-	-
Serious Injury Crashes	24	6:00pm - 8:59pm (29%)	Thursday (33%)	October (17%)



House District 55 Distracted Driving-Related Crashes

- | | |
|--------------------|------------------------|
| Interstate Crashes | Non-interstate Crashes |
| ● Fatal | ● Fatal |
| ● Serious Injury | ● Serious Injury |

The blue gradient represents the density of all distracted driving-related crashes.



Available Crash Data - Calendar Year (CY)	CY 2020	CY 2021	CY 2022	CY 2023
Total Crashes	1481	1598	1675	1711
Fatal Crashes	11	18	16	21
Injury Crashes	653	721	848	866
Distracted Driving-Related Fatal Crashes	1	2	1	0
Percent of Distracted Driving-Related Fatal Crashes to Total Fatal Crashes	9%	11%	6%	0%
Distracted Driving-Related Injury Crashes	125	103	128	151
Percent of Distracted Driving-Related Injury Crashes to Total Injury Crashes	19%	14%	15%	17%