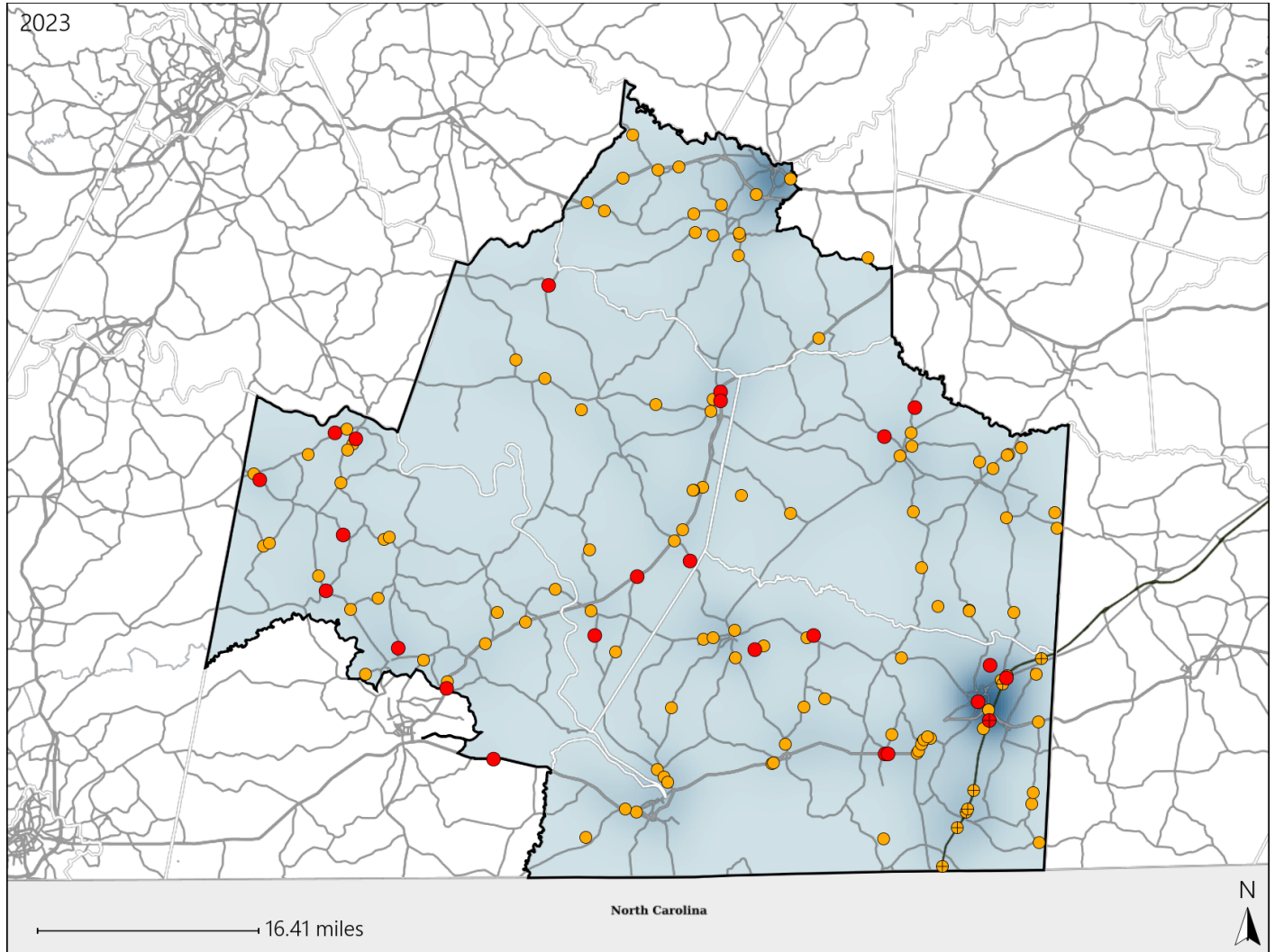


Virginia House District 50 Crash Statistics

Report Generated May, 2024

	Count	Highest Time Period(s)	Highest Day(s)	Highest Month(s)
Fatal Crashes	24	6:00pm - 8:59pm	Monday	January • June
Resulting Fatalities	28	Noon - 2:59pm (42%)	(25%)	(24%)
Serious Injury Crashes	117	6:00pm - 8:59pm (20%)	Saturday (21%)	July • October (28%)



House District 50 Crashes

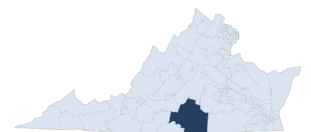
Interstate Crashes

- Fatal
- Serious Injury

Non-interstate Crashes

- Fatal
- Serious Injury

The blue gradient represents the density of all crashes.

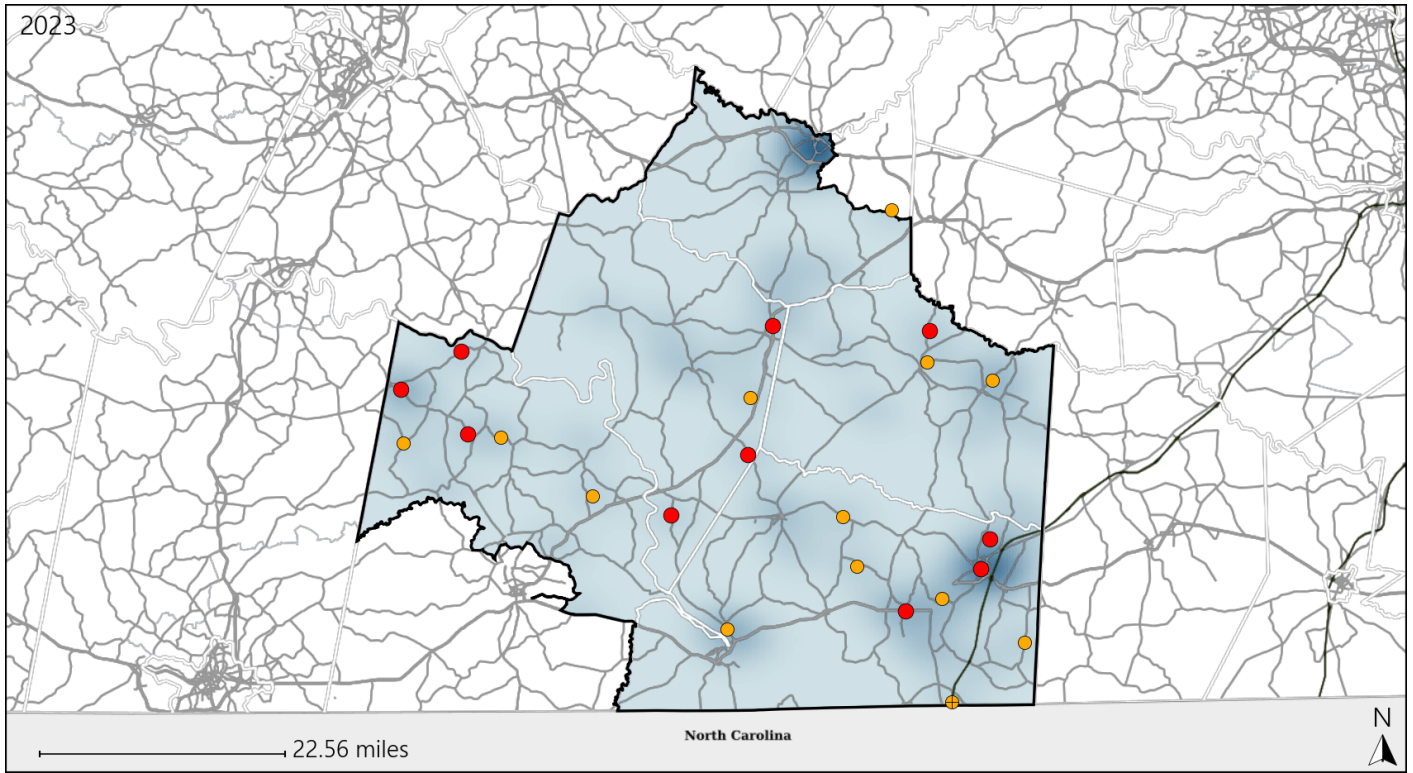


Available Crash Data - Calendar Year (CY)	CY 2020	CY 2021	CY 2022	CY 2023
Total Crashes	1037	1228	1180	1268
Fatal Crashes	16	27	31	24
Injury Crashes	324	379	358	386

Virginia House District 50 Alcohol Crash Statistics

Report Generated May, 2024

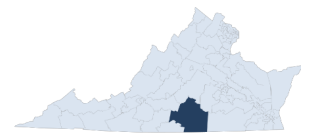
	Count	Highest Time Period(s)	Highest Day(s)	Highest Month(s)
Fatal Crashes	10	6:00pm - 8:59pm	Thursday	January • July
Resulting Fatalities	12	9:00pm - 11:59pm (60%)	(30%)	(40%)
Serious Injury Crashes	13	9:00pm - 11:59pm Midnight - 2:59am (46%)	Friday • Monday (46%)	November • October (46%)



House District 50 Alcohol-Related Crashes

Interstate Crashes Non-interstate Crashes
 ● Fatal ● Fatal
 ⊕ Serious Injury ⊕ Serious Injury

The blue gradient represents the density of all alcohol-related crashes.

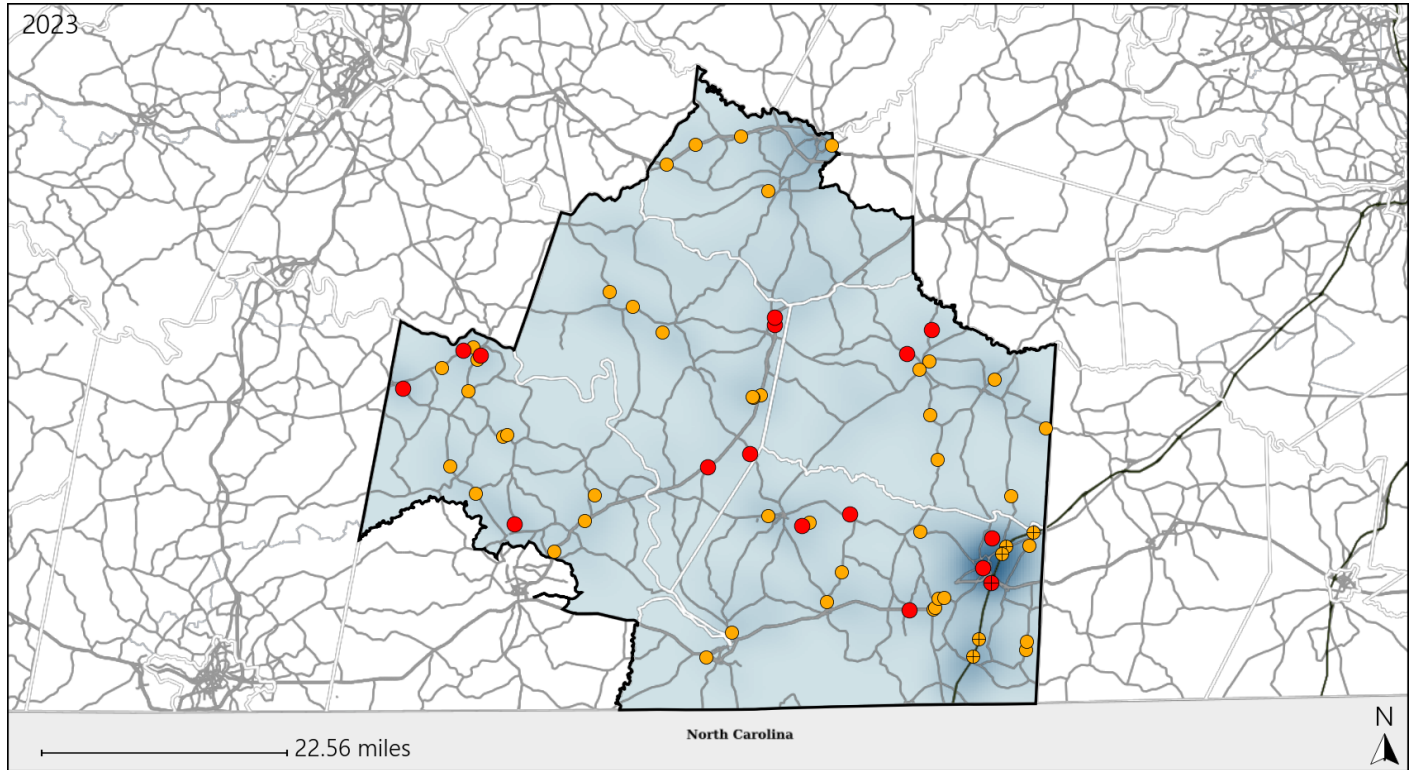


Available Crash Data - Calendar Year (CY)	CY 2020	CY 2021	CY 2022	CY 2023
Total Crashes	1037	1228	1180	1268
Fatal Crashes	16	27	31	24
Injury Crashes	324	379	358	386
Alcohol-Related Fatal Crashes	5	3	9	10
Percent of Alcohol-Related Fatal Crashes to Total Fatal Crashes	31%	11%	29%	42%
Alcohol-Related Injury Crashes	39	42	42	30
Percent of Alcohol-Related Injury Crashes to Total Injury Crashes	12%	11%	12%	8%

Virginia House District 50 Speed Crash Statistics

Report Generated May, 2024

	Count	Highest Time Period(s)	Highest Day(s)	Highest Month(s)
Fatal Crashes	16	6:00pm - 8:59pm	Thursday	June
Resulting Fatalities	19	Noon - 2:59pm (50%)	(31%)	(19%)
Serious Injury Crashes	49	3:00pm - 5:59pm (24%)	Saturday (20%)	October (14%)



House District 50 Speed-Related Crashes

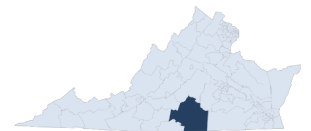
Interstate Crashes

Non-interstate Crashes

- Fatal
- Serious Injury

- Fatal
- Serious Injury

The blue gradient represents the density of all speed-related crashes.

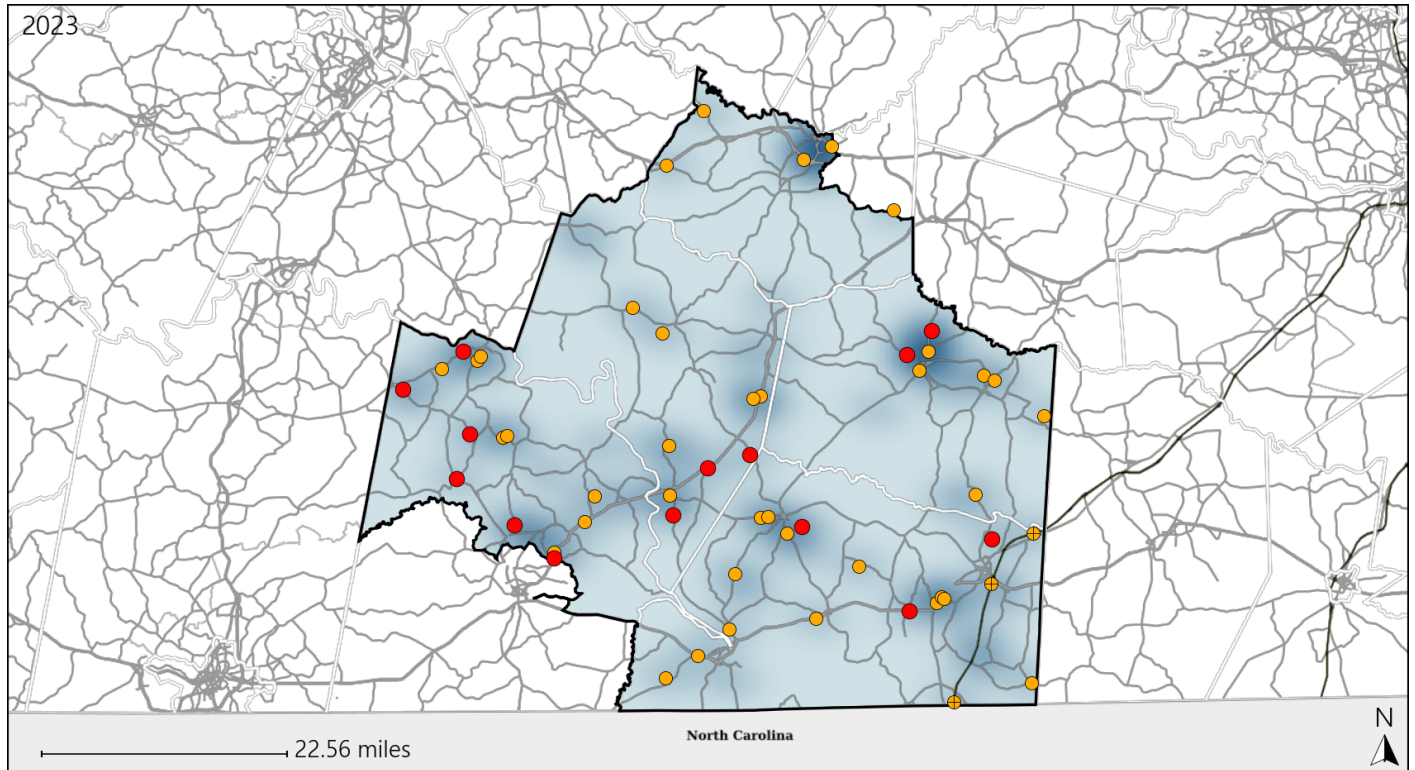


Available Crash Data - Calendar Year (CY)	CY 2020	CY 2021	CY 2022	CY 2023
Total Crashes	1037	1228	1180	1268
Fatal Crashes	16	27	31	24
Injury Crashes	324	379	358	386
Speed-Related Fatal Crashes	5	13	8	16
Percent of Speed-Related Fatal Crashes to Total Fatal Crashes	31%	48%	26%	67%
Speed-Related Injury Crashes	91	108	100	110
Percent of Speed-Related Injury Crashes to Total Injury Crashes	28%	28%	28%	28%

Virginia House District 50 Unrestrained Crash Statistics

Report Generated May, 2024

	Count	Highest Time Period(s)	Highest Day(s)	Highest Month(s)
Fatal Crashes	14	6:00pm - 8:59pm	Thursday • Wednesday	January
Unrestrained Fatalities	16	(29%)	(58%)	(21%)
Serious Injury Crashes	42	9:00pm - 11:59pm	Saturday	July • May
		(24%)	(21%)	(28%)



House District 50 Unrestrained-Related Crashes

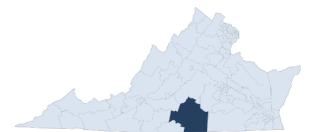
Interstate Crashes

- Fatal
- Serious Injury

Non-interstate Crashes

- Fatal
- Serious Injury

The blue gradient represents the density of all unrestrained-related crashes.

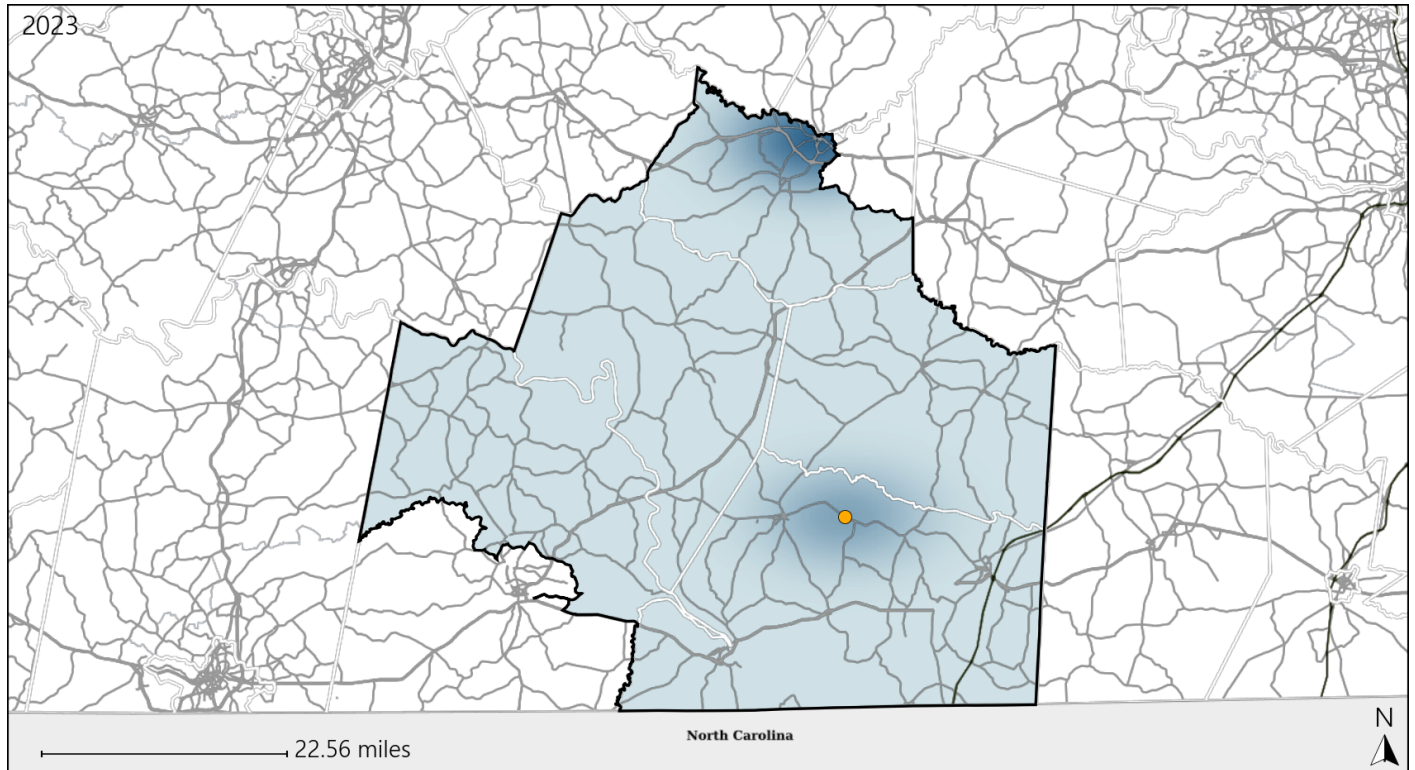


Available Crash Data - Calendar Year (CY)	CY 2020	CY 2021	CY 2022	CY 2023
Total Crashes	1037	1228	1180	1268
Fatalities	16	31	34	28
Injuries	480	554	494	586
Unrestrained Fatalities	8	15	19	16
Percent of Unrestrained Fatalities to Total Fatalities	50%	48%	56%	57%
Unrestrained Injuries	66	87	70	91
Percent of Unrestrained Injuries to Total Injuries	14%	16%	14%	16%

Virginia House District 50 Pedestrian Crash Statistics

Report Generated May, 2024

	Count	Highest Time Period(s)	Highest Day(s)	Highest Month(s)
Fatal Crashes	0	-	-	-
Pedestrian Fatalities	0	-	-	-
Serious Injury Crashes	1	6:00pm - 8:59pm (100%)	Friday (100%)	October (100%)



House District 50 Pedestrian-Related Crashes

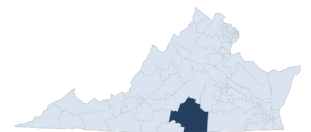
Interstate Crashes

- Fatal
- Serious Injury

Non-interstate Crashes

- Fatal
- Serious Injury

The blue gradient represents the density of all pedestrian-related crashes.

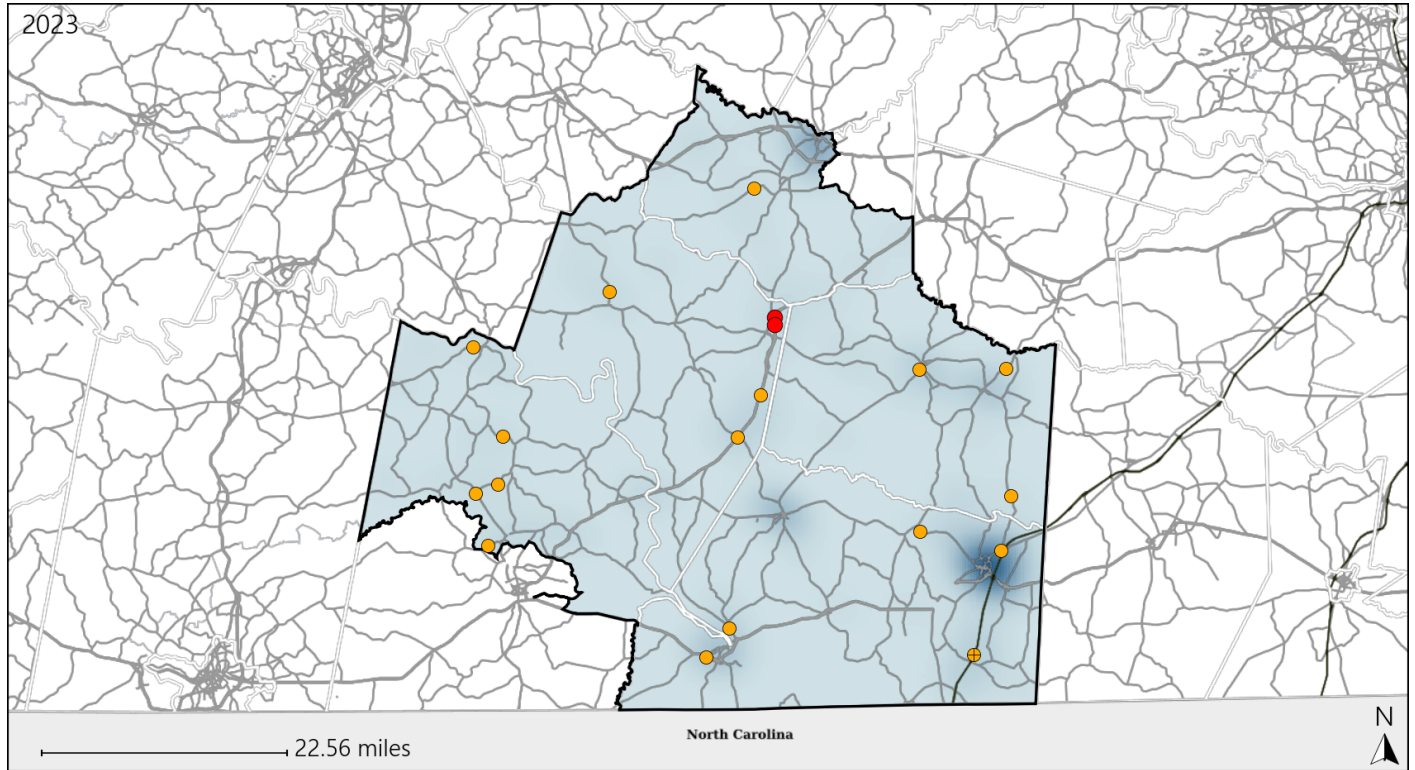


Available Crash Data - Calendar Year (CY)	CY 2020	CY 2021	CY 2022	CY 2023
Total Crashes	1037	1228	1180	1268
Fatal Crashes	16	27	31	24
Injury Crashes	324	379	358	386
Pedestrian-Related Fatal Crashes	1	2	2	0
Percent of Pedestrian-Related Fatal Crashes to Total Fatal Crashes	6%	7%	6%	0%
Pedestrian-Related Injury Crashes	3	4	5	3
Percent of Pedestrian-Related Injury Crashes to Total Injury Crashes	1%	1%	1%	1%

Virginia House District 50 Distracted Driving Crash Statistics

Report Generated May, 2024

	Count	Highest Time Period(s)	Highest Day(s)	Highest Month(s)
Fatal Crashes	2	3:00am - 5:59am	Saturday • Sunday	August • March
Resulting Fatalities	2	3:00pm - 5:59pm (100%)	(100%)	(100%)
Serious Injury Crashes	17	6:00pm - 8:59pm (41%)	Thursday (29%)	September (24%)



House District 50 Distracted Driving-Related Crashes

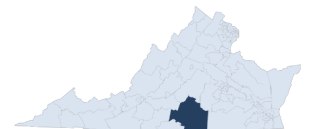
Interstate Crashes

Non-interstate Crashes

- Fatal
- Serious Injury

- Fatal
- Serious Injury

The blue gradient represents the density of all distracted driving-related crashes.



Available Crash Data - Calendar Year (CY)	CY 2020	CY 2021	CY 2022	CY 2023
Total Crashes	1037	1228	1180	1268
Fatal Crashes	16	27	31	24
Injury Crashes	324	379	358	386
Distracted Driving-Related Fatal Crashes	4	2	3	2
Percent of Distracted Driving-Related Fatal Crashes to Total Fatal Crashes	25%	7%	10%	8%
Distracted Driving-Related Injury Crashes	49	73	54	55
Percent of Distracted Driving-Related Injury Crashes to Total Injury Crashes	15%	19%	15%	14%