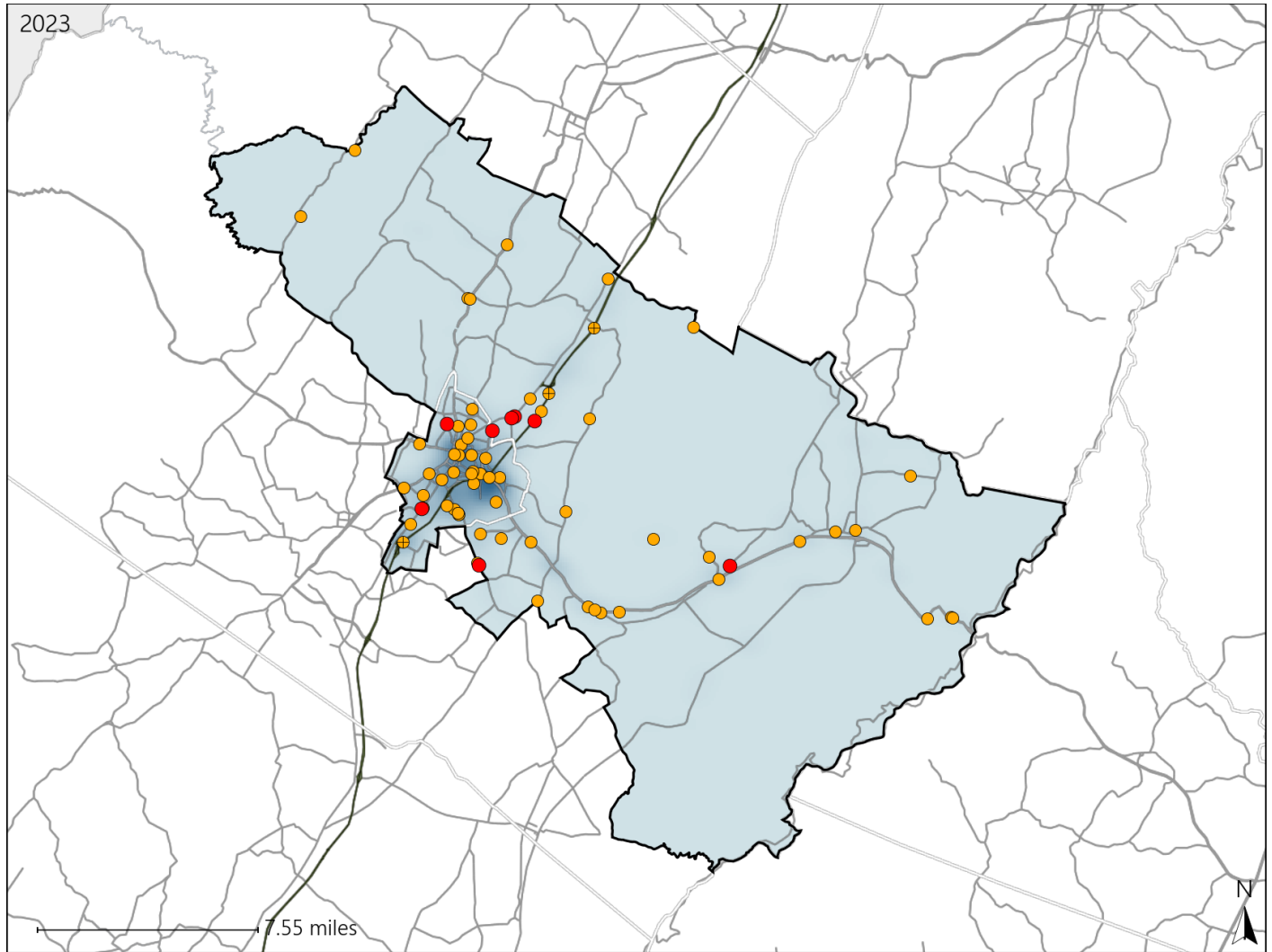


Virginia House District 34 Crash Statistics

Report Generated May, 2024

	Count	Highest Time Period(s)	Highest Day(s)	Highest Month(s)
Fatal Crashes	8	6:00am - 8:59am	Tuesday	August • December
Resulting Fatalities	8	(38%)	(38%)	(50%)
Serious Injury Crashes	63	3:00pm - 5:59pm	Tuesday	May
		(32%)	(22%)	(14%)



House District 34 Crashes

Interstate Crashes

- Fatal
- Serious Injury

Non-interstate Crashes

- Fatal
- Serious Injury

The blue gradient represents the density of all crashes.

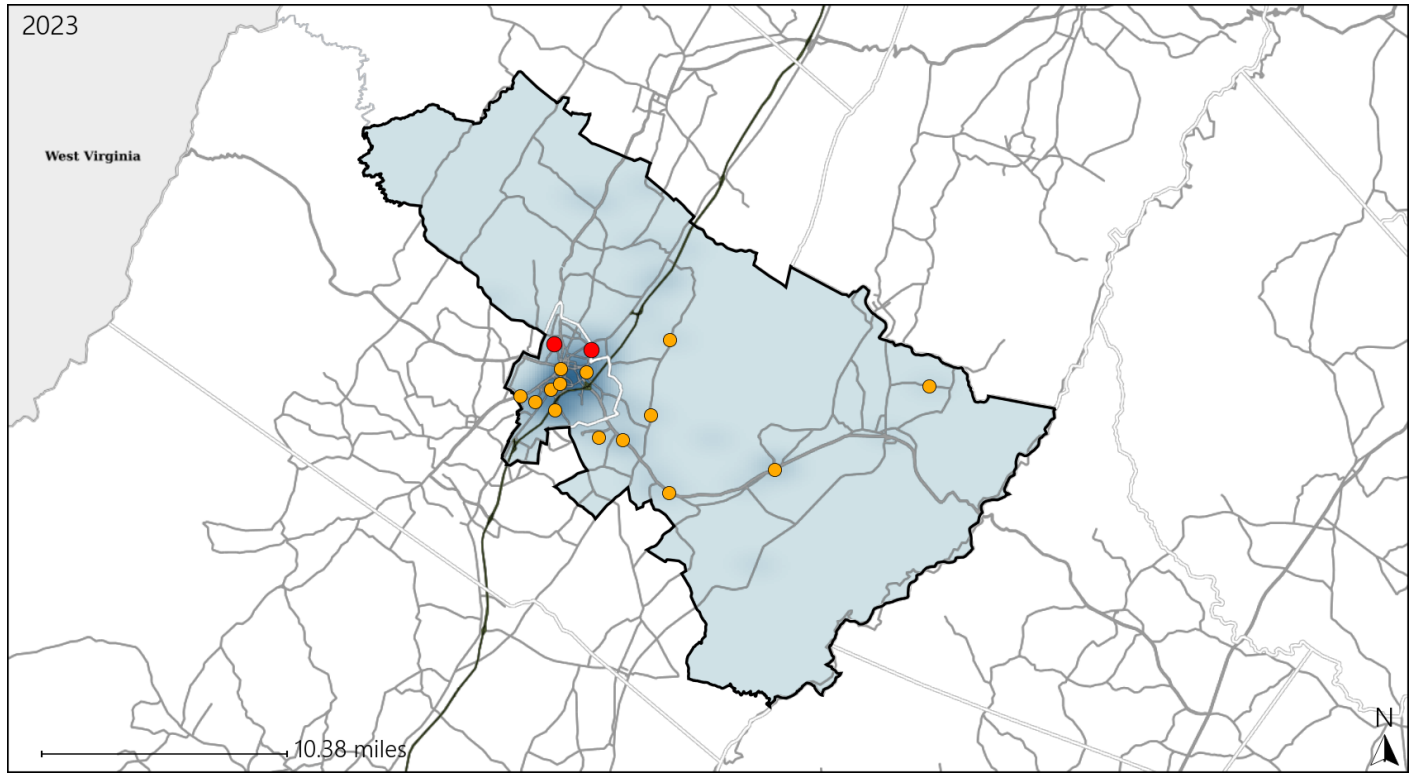


Available Crash Data - Calendar Year (CY)	CY 2020	CY 2021	CY 2022	CY 2023
Total Crashes	1205	1563	1642	1675
Fatal Crashes	8	12	15	8
Injury Crashes	275	357	370	388

Virginia House District 34 Alcohol Crash Statistics

Report Generated May, 2024

	Count	Highest Time Period(s)	Highest Day(s)	Highest Month(s)
Fatal Crashes	2	3:00am - 5:59am	Saturday • Sunday	October
Resulting Fatalities	2	6:00am - 8:59am (100%)	(100%)	(100%)
Serious Injury Crashes	14	6:00pm - 8:59pm Midnight - 2:59am (72%)	Tuesday (36%)	October (21%)



House District 34 Alcohol-Related Crashes

Interstate Crashes Non-interstate Crashes
 ● Fatal ● Fatal
 ⊕ Serious Injury ⊕ Serious Injury

The blue gradient represents the density of all alcohol-related crashes.

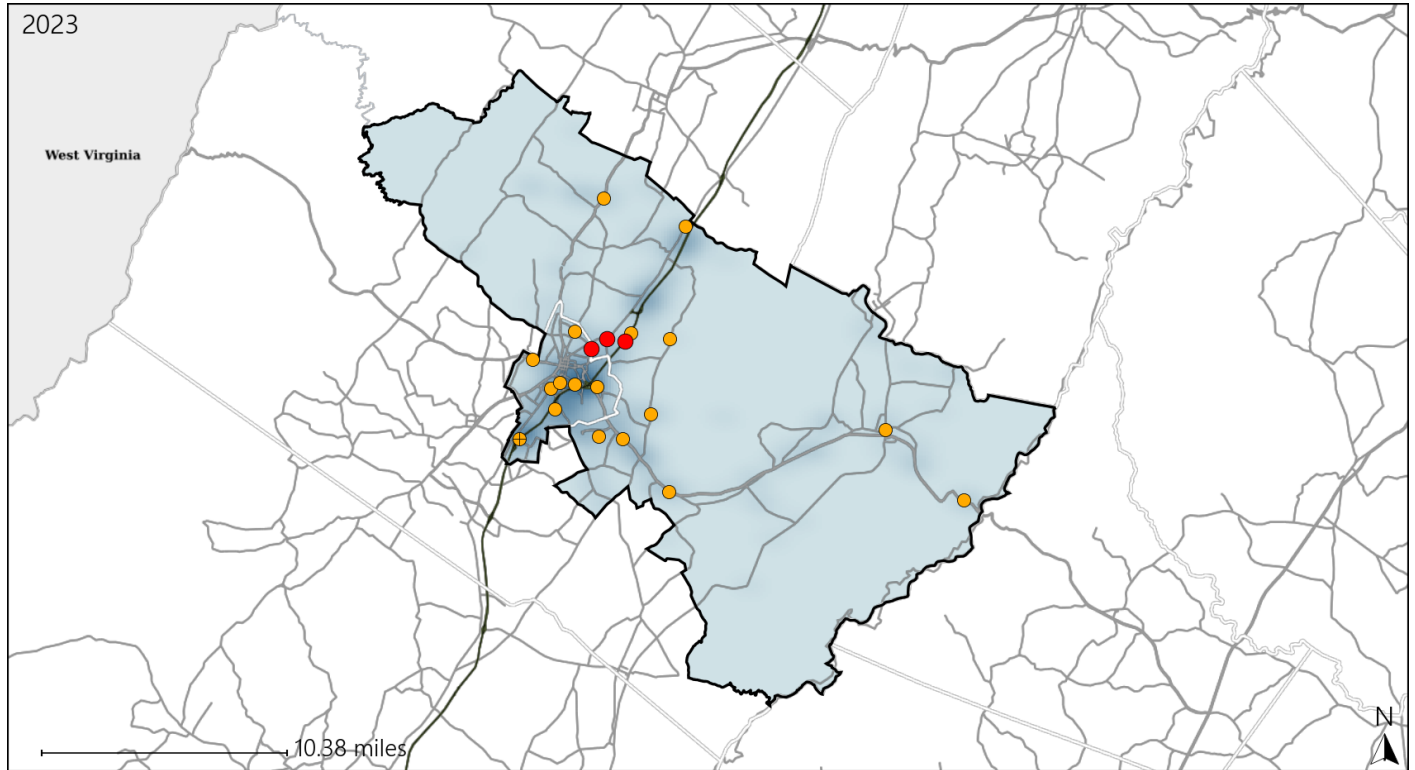


Available Crash Data - Calendar Year (CY)	CY 2020	CY 2021	CY 2022	CY 2023
Total Crashes	1205	1563	1642	1675
Fatal Crashes	8	12	15	8
Injury Crashes	275	357	370	388
Alcohol-Related Fatal Crashes	4	4	4	2
Percent of Alcohol-Related Fatal Crashes to Total Fatal Crashes	50%	33%	27%	25%
Alcohol-Related Injury Crashes	17	31	28	32
Percent of Alcohol-Related Injury Crashes to Total Injury Crashes	6%	9%	8%	8%

Virginia House District 34 Speed Crash Statistics

Report Generated May, 2024

	Count	Highest Time Period(s)	Highest Day(s)	Highest Month(s)
Fatal Crashes	3	3:00am - 5:59am	Monday • Saturday	August • December
Resulting Fatalities	3	6:00pm - 8:59pm (66%)	(66%)	(66%)
Serious Injury Crashes	18	Midnight - 2:59am (28%)	Thursday • Tuesday (56%)	October (22%)



House District 34 Speed-Related Crashes

Interstate Crashes Non-interstate Crashes
 ● Fatal ● Fatal
 ● Serious Injury ● Serious Injury

The blue gradient represents the density of all speed-related crashes.

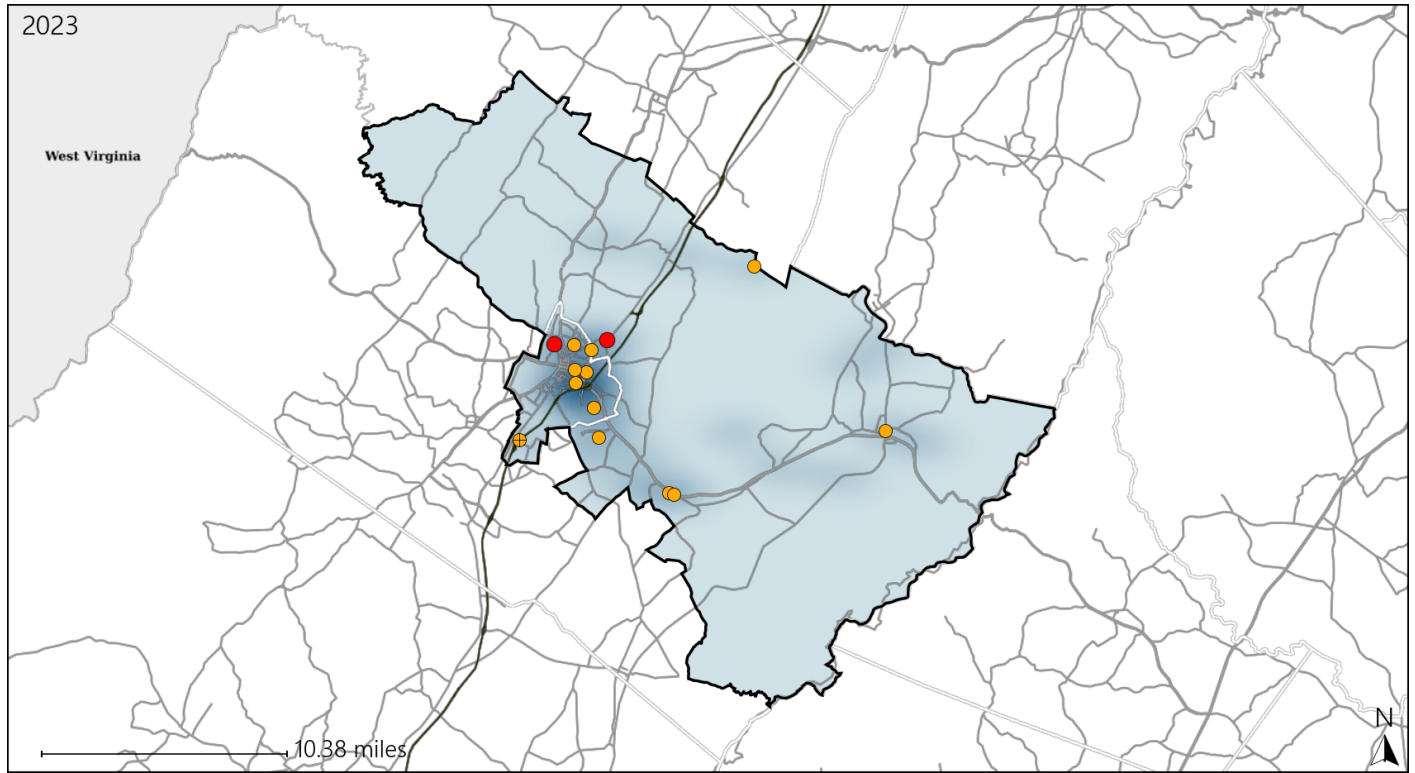


Available Crash Data - Calendar Year (CY)	CY 2020	CY 2021	CY 2022	CY 2023
Total Crashes	1205	1563	1642	1675
Fatal Crashes	8	12	15	8
Injury Crashes	275	357	370	388
Speed-Related Fatal Crashes	2	7	9	3
Percent of Speed-Related Fatal Crashes to Total Fatal Crashes	25%	58%	60%	38%
Speed-Related Injury Crashes	68	80	77	71
Percent of Speed-Related Injury Crashes to Total Injury Crashes	25%	22%	21%	18%

Virginia House District 34 Unrestrained Crash Statistics

Report Generated May, 2024

	Count	Highest Time Period(s)	Highest Day(s)	Highest Month(s)
Fatal Crashes	2	6:00am - 8:59am	Monday • Sunday	December • October
Unrestrained Fatalities	2	Noon - 2:59pm (100%)	(100%)	(100%)
Serious Injury Crashes	12	3:00pm - 5:59pm Midnight - 2:59am (50%)	Saturday (25%)	August • January (34%)



House District 34 Unrestrained-Related Crashes

- | | |
|--------------------|------------------------|
| Interstate Crashes | Non-interstate Crashes |
| ● Fatal | ● Fatal |
| ⊕ Serious Injury | ⊕ Serious Injury |

The blue gradient represents the density of all unrestrained-related crashes.

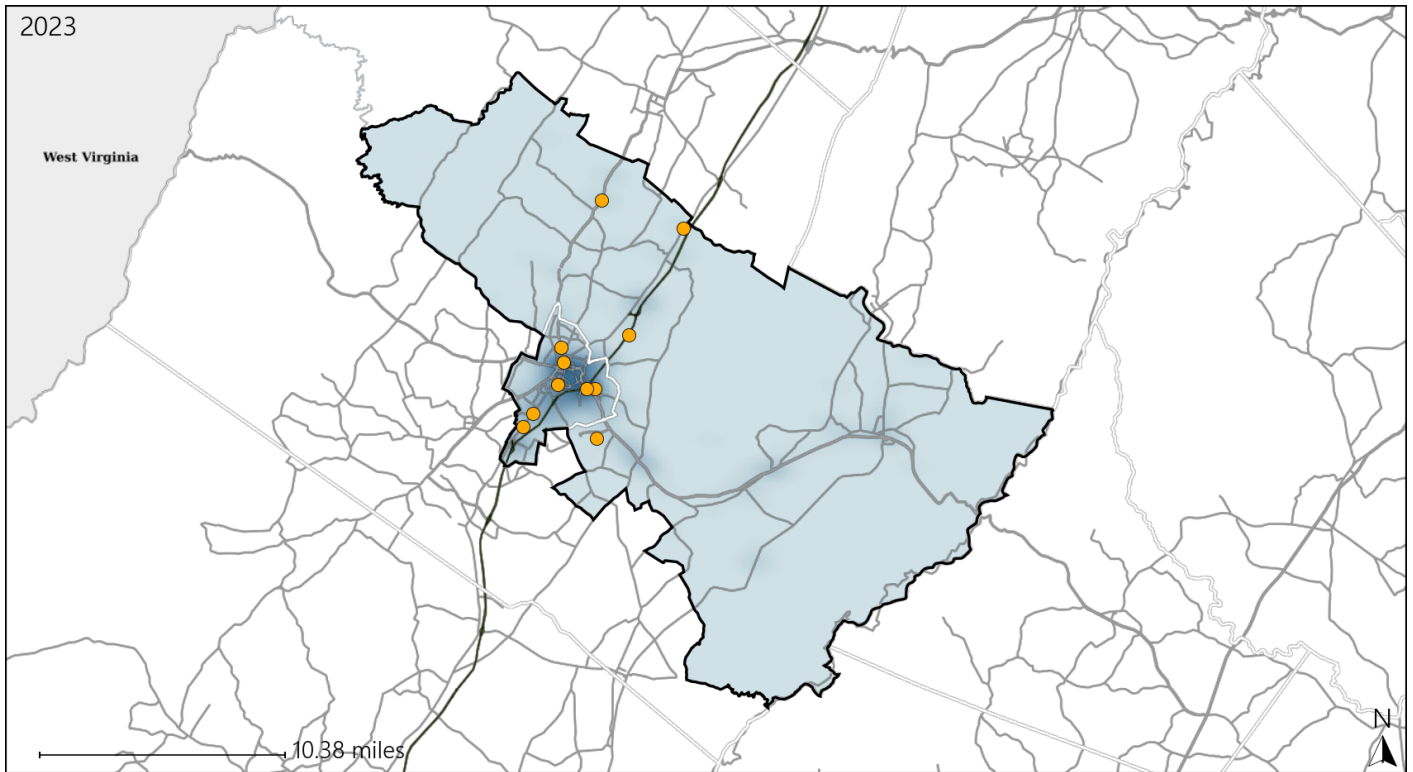


Available Crash Data - Calendar Year (CY)	CY 2020	CY 2021	CY 2022	CY 2023
Total Crashes	1205	1563	1642	1675
Fatalities	9	12	15	8
Injuries	429	472	489	547
Unrestrained Fatalities	5	3	5	2
Percent of Unrestrained Fatalities to Total Fatalities	56%	25%	33%	25%
Unrestrained Injuries	39	53	49	31
Percent of Unrestrained Injuries to Total Injuries	9%	11%	10%	6%

Virginia House District 34 Distracted Driving Crash Statistics

Report Generated May, 2024

	Count	Highest Time Period(s)	Highest Day(s)	Highest Month(s)
Fatal Crashes	0	-	-	-
Resulting Fatalities	0	-	-	-
Serious Injury Crashes	11	6:00pm - 8:59pm Midnight - 2:59am (54%)	Saturday * Thursday (72%)	August * June (36%)



House District 34 Distracted Driving-Related Crashes

- | | |
|--------------------|------------------------|
| Interstate Crashes | Non-interstate Crashes |
| ● Fatal | ● Fatal |
| ⊕ Serious Injury | ● Serious Injury |

The blue gradient represents the density of all distracted driving-related crashes.



Available Crash Data - Calendar Year (CY)	CY 2020	CY 2021	CY 2022	CY 2023
Total Crashes	1205	1563	1642	1675
Fatal Crashes	8	12	15	8
Injury Crashes	275	357	370	388
Distracted Driving-Related Fatal Crashes	3	2	3	0
Percent of Distracted Driving-Related Fatal Crashes to Total Fatal Crashes	38%	17%	20%	0%
Distracted Driving-Related Injury Crashes	50	67	74	55
Percent of Distracted Driving-Related Injury Crashes to Total Injury Crashes	18%	19%	20%	14%