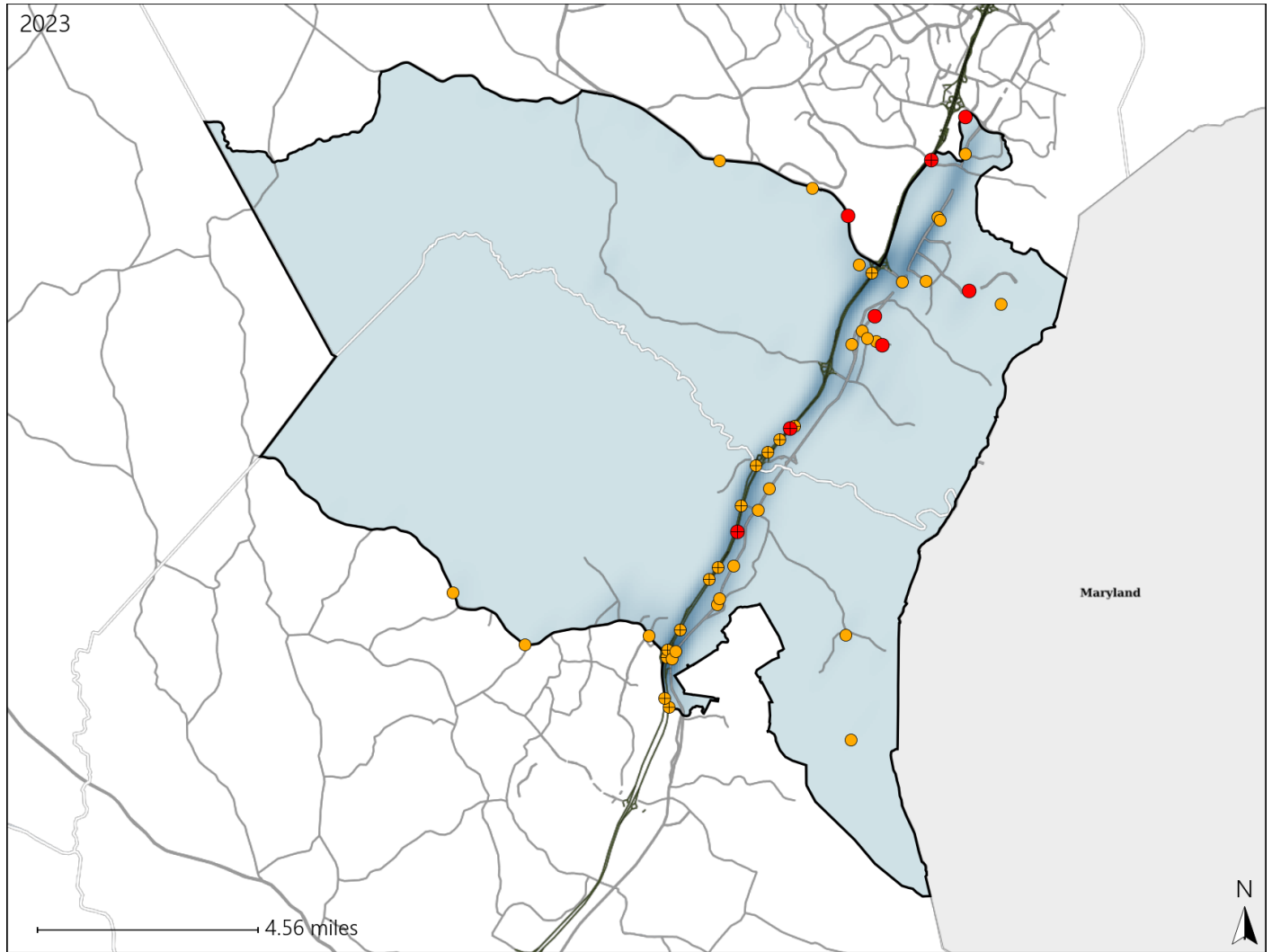


Virginia House District 23 Crash Statistics

Report Generated May, 2024

| | Count | Highest Time Period(s) | Highest Day(s) | Highest Month(s) |
|-------------------------------|-----------|--------------------------|------------------|------------------|
| Fatal Crashes | 8 | Midnight - 2:59am | Wednesday | August |
| Resulting Fatalities | 9 | (38%) | (50%) | (25%) |
| Serious Injury Crashes | 38 | Noon - 2:59pm | Sunday | December |
| | | (21%) | (18%) | (16%) |



House District 23 Crashes

Interstate Crashes

- Fatal
- Serious Injury

Non-interstate Crashes

- Fatal
- Serious Injury

The blue gradient represents the density of all crashes.

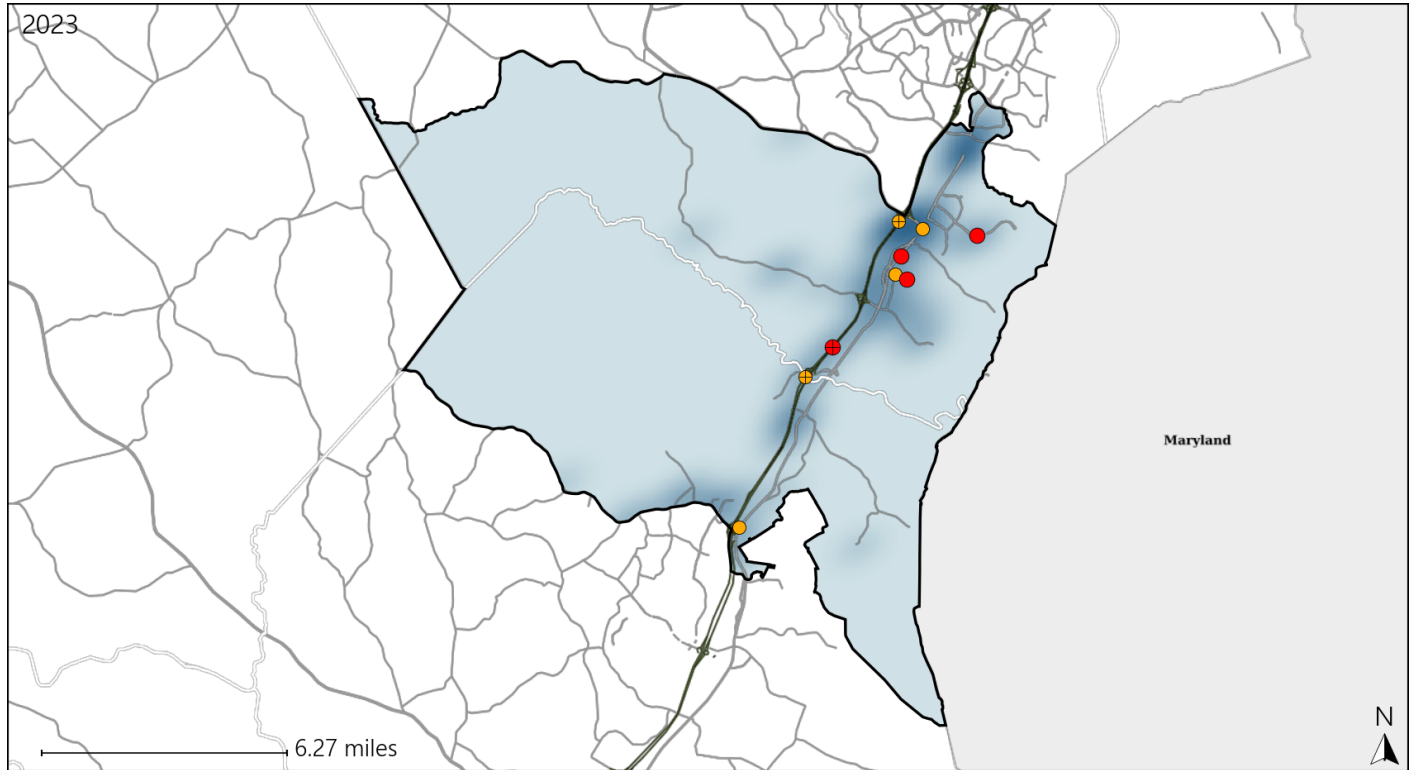


| Available Crash Data - Calendar Year (CY) | CY 2020 | CY 2021 | CY 2022 | CY 2023 |
|---|-------------|-------------|-------------|-------------|
| Total Crashes | 1037 | 1350 | 1392 | 1356 |
| Fatal Crashes | 7 | 4 | 8 | 8 |
| Injury Crashes | 246 | 361 | 365 | 356 |

Virginia House District 23 Alcohol Crash Statistics

Report Generated May, 2024

| | Count | Highest Time Period(s) | Highest Day(s) | Highest Month(s) |
|-------------------------------|----------|------------------------------------|----------------------------------|-----------------------------|
| Fatal Crashes | 4 | 9:00pm - 11:59pm | Saturday | August • January |
| Resulting Fatalities | 4 | Midnight - 2:59am (100%) | (50%) | (50%) |
| Serious Injury Crashes | 5 | 3:00am - 5:59am (40%) | Friday • Tuesday (80%) | July • June (40%) |



House District 23 Alcohol-Related Crashes

Interstate Crashes

Non-interstate Crashes

● Fatal

● Fatal

● Serious Injury

● Serious Injury

The blue gradient represents the density of all alcohol-related crashes.

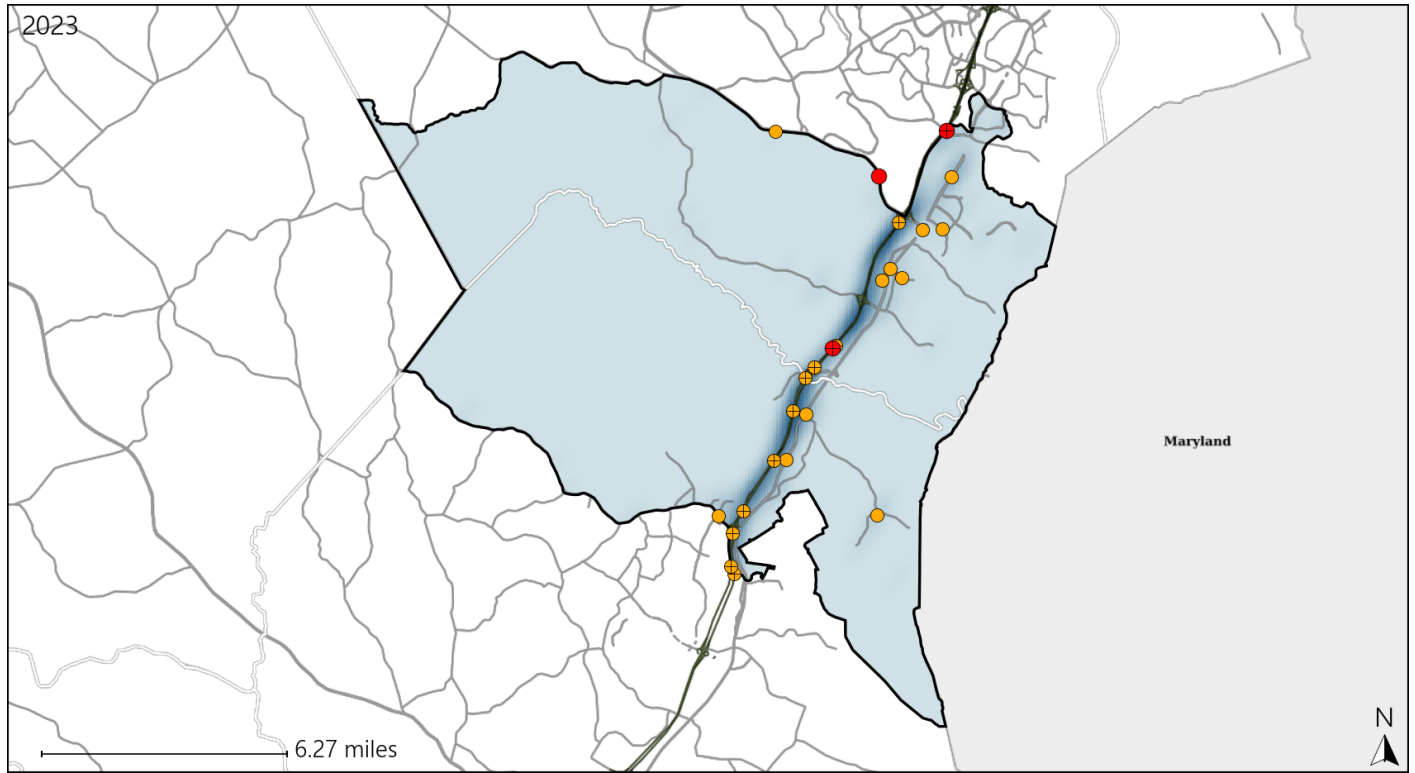


| Available Crash Data - Calendar Year (CY) | CY 2020 | CY 2021 | CY 2022 | CY 2023 |
|---|---------|---------|---------|---------|
| Total Crashes | 1037 | 1350 | 1392 | 1356 |
| Fatal Crashes | 7 | 4 | 8 | 8 |
| Injury Crashes | 246 | 361 | 365 | 356 |
| Alcohol-Related Fatal Crashes | 1 | 2 | 4 | 4 |
| Percent of Alcohol-Related Fatal Crashes to Total Fatal Crashes | 14% | 50% | 50% | 50% |
| Alcohol-Related Injury Crashes | 21 | 29 | 28 | 21 |
| Percent of Alcohol-Related Injury Crashes to Total Injury Crashes | 9% | 8% | 8% | 6% |

Virginia House District 23 Speed Crash Statistics

Report Generated May, 2024

| | Count | Highest Time Period(s) | Highest Day(s) | Highest Month(s) |
|-------------------------------|-----------|---|--------------------|-------------------|
| Fatal Crashes | 3 | 3:00pm - 5:59pm | Wednesday | April - July |
| Resulting Fatalities | 4 | 6:00pm - 8:59pm (66%) | (67%) | (66%) |
| Serious Injury Crashes | 21 | 9:00am - 11:59am 9:00pm - 11:59pm (38%) | Wednesday (24%) | December (29%) |



House District 23 Speed-Related Crashes

Interstate Crashes Non-interstate Crashes
 ● Fatal ● Fatal
 ⊕ Serious Injury ⊕ Serious Injury

The blue gradient represents the density of all speed-related crashes.

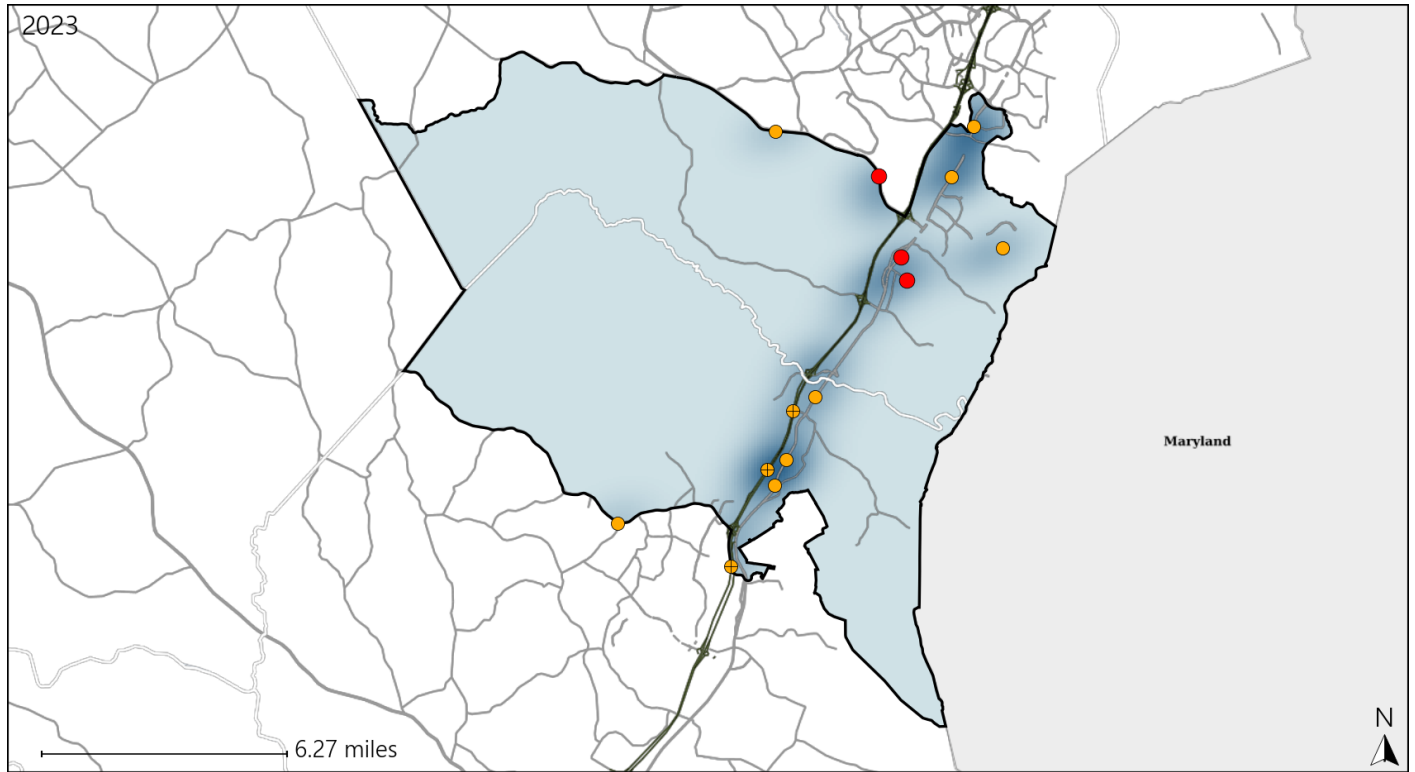


| Available Crash Data - Calendar Year (CY) | CY 2020 | CY 2021 | CY 2022 | CY 2023 |
|---|---------|---------|---------|---------|
| Total Crashes | 1037 | 1350 | 1392 | 1356 |
| Fatal Crashes | 7 | 4 | 8 | 8 |
| Injury Crashes | 246 | 361 | 365 | 356 |
| Speed-Related Fatal Crashes | 2 | 2 | 2 | 3 |
| Percent of Speed-Related Fatal Crashes to Total Fatal Crashes | 29% | 50% | 25% | 38% |
| Speed-Related Injury Crashes | 78 | 108 | 111 | 111 |
| Percent of Speed-Related Injury Crashes to Total Injury Crashes | 32% | 30% | 30% | 31% |

Virginia House District 23 Unrestrained Crash Statistics

Report Generated May, 2024

| | Count | Highest Time Period(s) | Highest Day(s) | Highest Month(s) |
|--------------------------------|-----------|--------------------------|--------------------------|-----------------------|
| Fatal Crashes | 3 | Midnight - 2:59am | Wednesday | April • August |
| Unrestrained Fatalities | 3 | (67%) | (67%) | (66%) |
| Serious Injury Crashes | 11 | Noon - 2:59pm | Friday • Saturday | June |
| | | (36%) | (36%) | (27%) |



House District 23 Unrestrained-Related Crashes

Interstate Crashes

- Fatal
- Serious Injury

Non-interstate Crashes

- Fatal
- Serious Injury

The blue gradient represents the density of all unrestrained-related crashes.

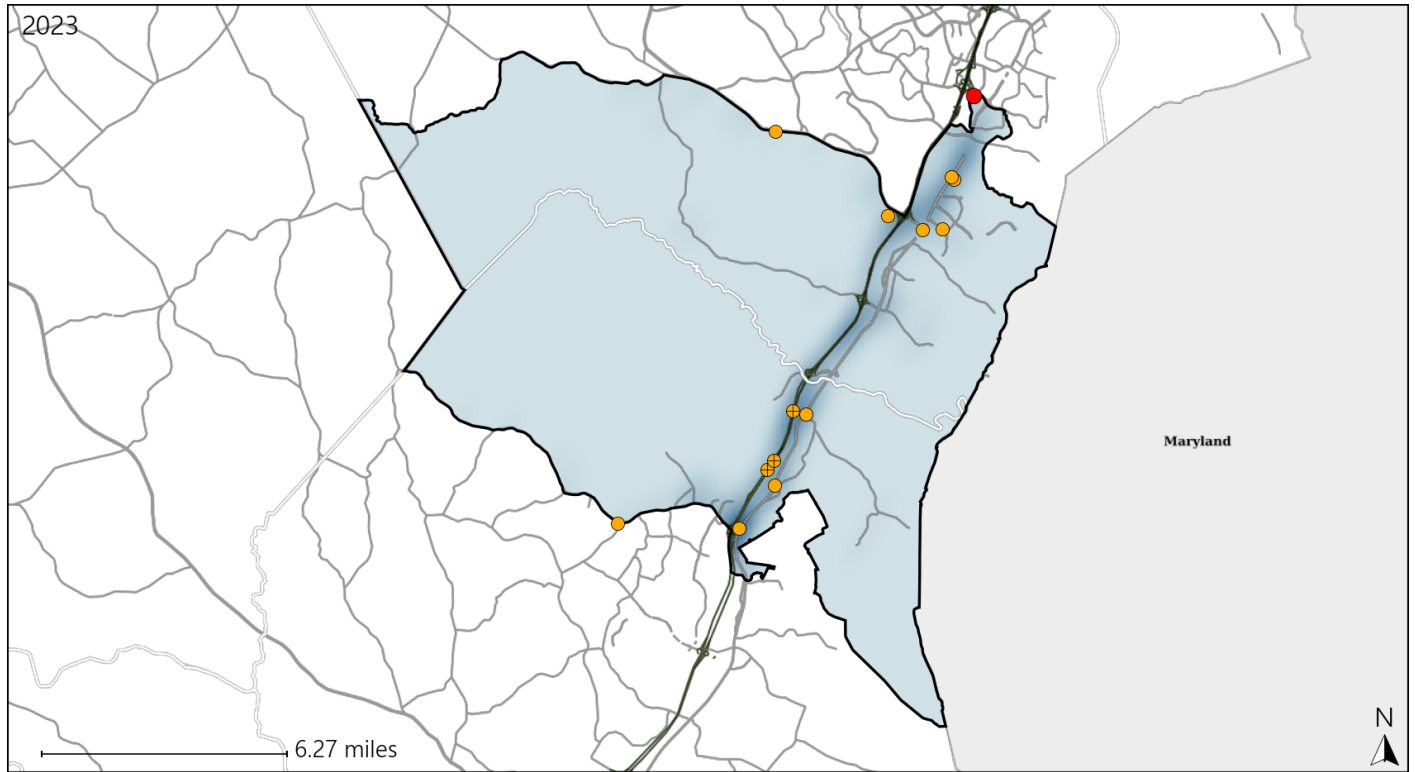


| Available Crash Data - Calendar Year (CY) | CY 2020 | CY 2021 | CY 2022 | CY 2023 |
|---|-------------|-------------|-------------|-------------|
| Total Crashes | 1037 | 1350 | 1392 | 1356 |
| Fatalities | 7 | 4 | 8 | 9 |
| Injuries | 412 | 594 | 586 | 599 |
| Unrestrained Fatalities | 2 | 0 | 0 | 3 |
| Percent of Unrestrained Fatalities to Total Fatalities | 29% | 0% | 0% | 33% |
| Unrestrained Injuries | 22 | 40 | 32 | 35 |
| Percent of Unrestrained Injuries to Total Injuries | 5% | 7% | 5% | 6% |

Virginia House District 23 Distracted Driving Crash Statistics

Report Generated May, 2024

| | Count | Highest Time Period(s) | Highest Day(s) | Highest Month(s) |
|-------------------------------|-----------|--------------------------|----------------|------------------|
| Fatal Crashes | 1 | Midnight - 2:59am | Sunday | August |
| Resulting Fatalities | 1 | (100%) | (100%) | (100%) |
| Serious Injury Crashes | 13 | 9:00pm - 11:59pm | Friday | June |
| | | (23%) | (31%) | (23%) |




House District 23 Distracted Driving-Related Crashes


Interstate Crashes

Non-interstate Crashes

 Fatal

 Fatal

 Serious Injury

 Serious Injury

The blue gradient represents the density of all distracted driving-related crashes.



| Available Crash Data - Calendar Year (CY) | CY 2020 | CY 2021 | CY 2022 | CY 2023 |
|--|---------|---------|---------|---------|
| Total Crashes | 1037 | 1350 | 1392 | 1356 |
| Fatal Crashes | 7 | 4 | 8 | 8 |
| Injury Crashes | 246 | 361 | 365 | 356 |
| Distracted Driving-Related Fatal Crashes | 1 | 1 | 1 | 1 |
| Percent of Distracted Driving-Related Fatal Crashes to Total Fatal Crashes | 14% | 25% | 13% | 13% |
| Distracted Driving-Related Injury Crashes | 55 | 83 | 86 | 87 |
| Percent of Distracted Driving-Related Injury Crashes to Total Injury Crashes | 22% | 23% | 24% | 24% |