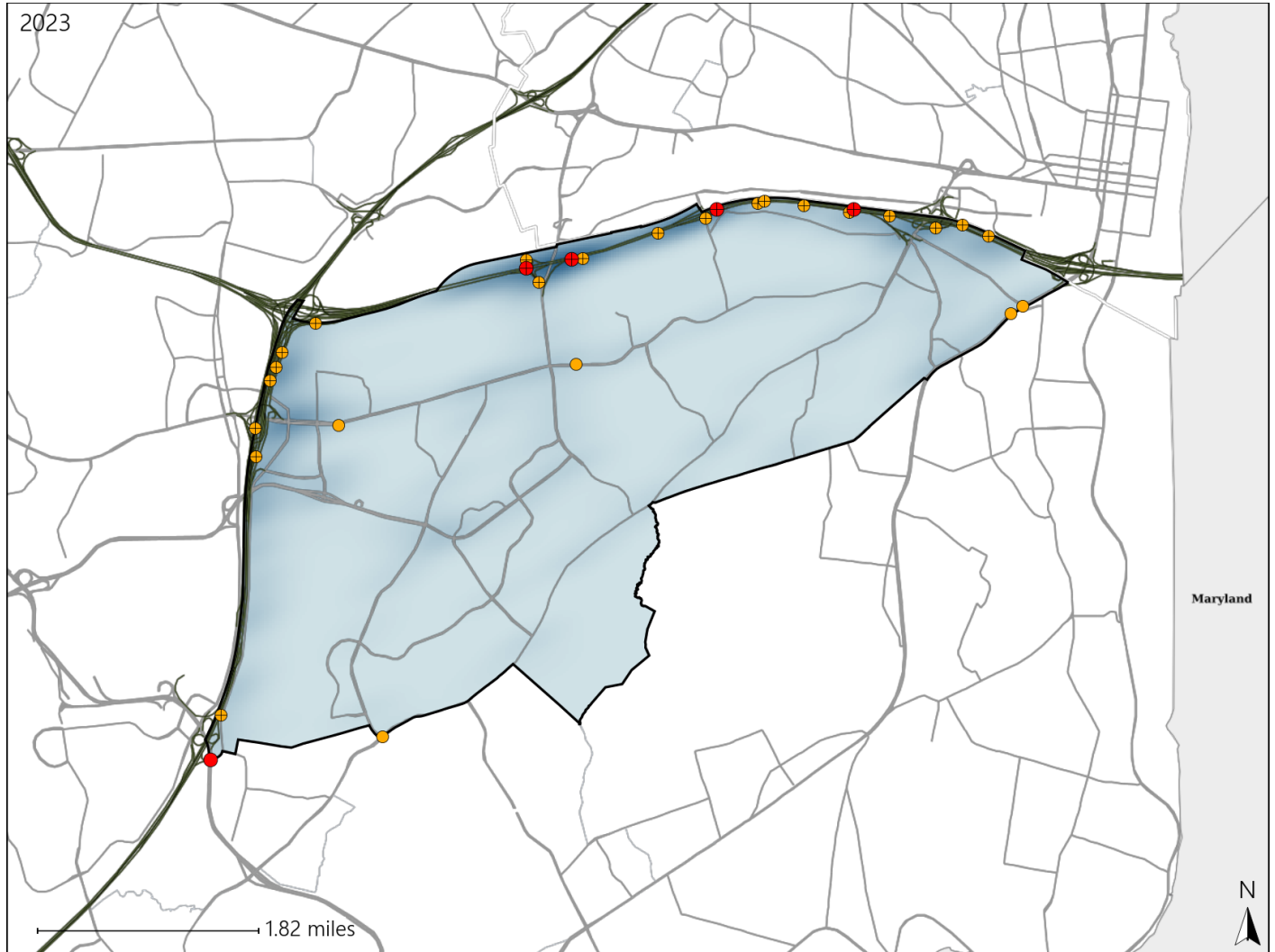


# Virginia House District 17 Crash Statistics

Report Generated May, 2024

	Count	Highest Time Period(s)	Highest Day(s)	Highest Month(s)
<b>Fatal Crashes</b>	<b>5</b>	<b>3:00am - 5:59am</b>	<b>Friday</b>	<b>September</b>
<b>Resulting Fatalities</b>	<b>6</b>	<b>Midnight - 2:59am</b> (80%)	<b>(40%)</b>	<b>(40%)</b>
<b>Serious Injury Crashes</b>	<b>25</b>	<b>6:00am - 8:59am</b> (20%)	<b>Saturday</b> (24%)	<b>September</b> (16%)



### House District 17 Crashes

Interstate Crashes

- Fatal
- Serious Injury

Non-interstate Crashes

- Fatal
- Serious Injury

The blue gradient represents the density of all crashes.

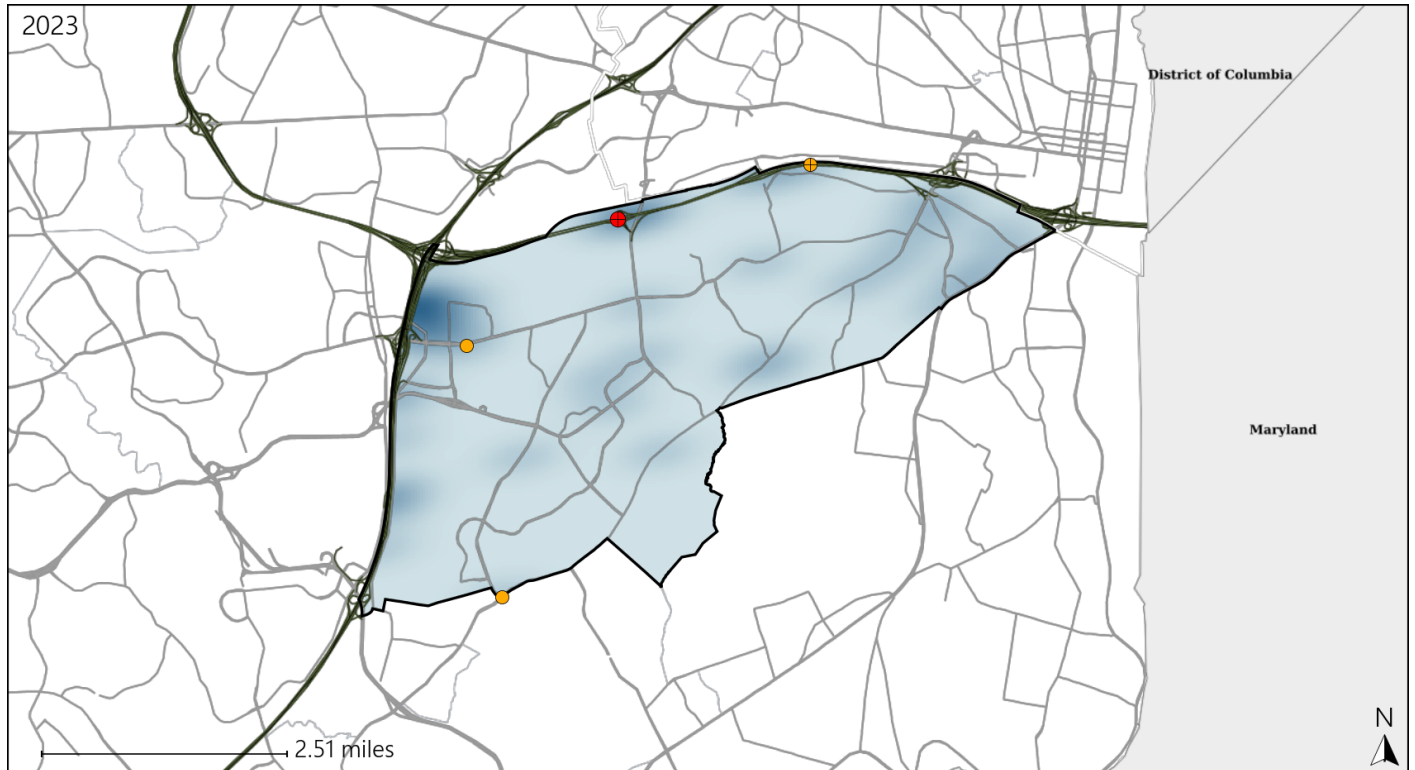


Available Crash Data - Calendar Year (CY)	CY 2020	CY 2021	CY 2022	CY 2023
Total Crashes	701	857	973	1109
Fatal Crashes	6	7	10	5
Injury Crashes	178	255	270	311

# Virginia House District 17 Alcohol Crash Statistics

Report Generated May, 2024

	Count	Highest Time Period(s)	Highest Day(s)	Highest Month(s)
<b>Fatal Crashes</b>	<b>1</b>	<b>3:00am - 5:59am</b>	<b>Saturday</b>	<b>March</b>
<b>Resulting Fatalities</b>	<b>1</b>	<b>(100%)</b>	<b>(100%)</b>	<b>(100%)</b>
<b>Serious Injury Crashes</b>	<b>3</b>	<b>Midnight - 2:59am</b>	<b>Wednesday</b>	<b>December • January</b>
		<b>(67%)</b>	<b>(67%)</b>	<b>(66%)</b>



## House District 17 Alcohol-Related Crashes

Interstate Crashes                      Non-interstate Crashes  
 ● Fatal                                      ● Fatal  
 ● Serious Injury                          ● Serious Injury

The blue gradient represents the density of all alcohol-related crashes.

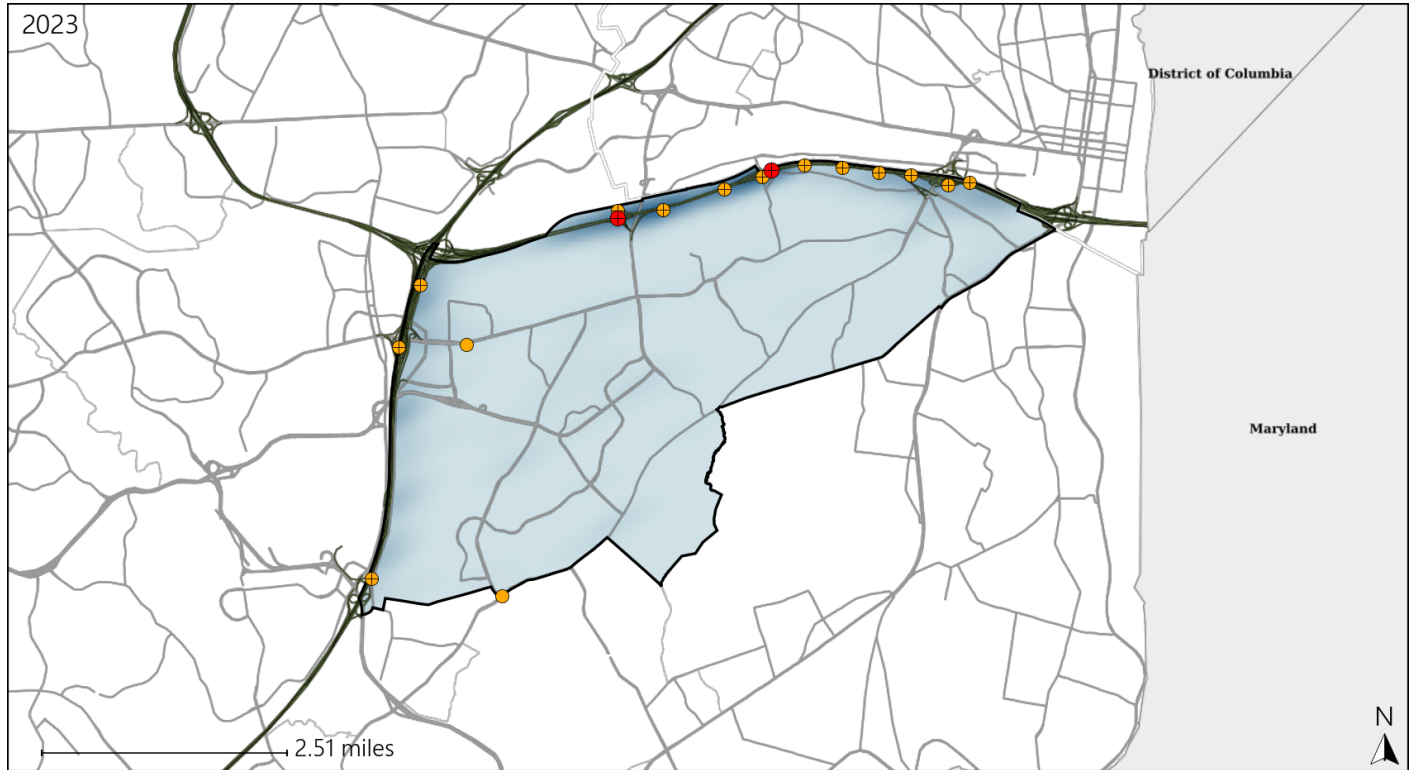


Available Crash Data - Calendar Year (CY)	CY 2020	CY 2021	CY 2022	CY 2023
<b>Total Crashes</b>	<b>701</b>	<b>857</b>	<b>973</b>	<b>1109</b>
<b>Fatal Crashes</b>	<b>6</b>	<b>7</b>	<b>10</b>	<b>5</b>
<b>Injury Crashes</b>	<b>178</b>	<b>255</b>	<b>270</b>	<b>311</b>
<b>Alcohol-Related Fatal Crashes</b>	<b>1</b>	<b>2</b>	<b>4</b>	<b>1</b>
<b>Percent of Alcohol-Related Fatal Crashes to Total Fatal Crashes</b>	<b>17%</b>	<b>29%</b>	<b>40%</b>	<b>20%</b>
<b>Alcohol-Related Injury Crashes</b>	<b>10</b>	<b>15</b>	<b>15</b>	<b>12</b>
<b>Percent of Alcohol-Related Injury Crashes to Total Injury Crashes</b>	<b>6%</b>	<b>6%</b>	<b>6%</b>	<b>4%</b>

# Virginia House District 17 Speed Crash Statistics

Report Generated May, 2024

	Count	Highest Time Period(s)	Highest Day(s)	Highest Month(s)
<b>Fatal Crashes</b>	<b>2</b>	<b>3:00am - 5:59am</b>	<b>Saturday • Tuesday</b>	<b>March • September</b>
<b>Resulting Fatalities</b>	<b>2</b>	<b>Midnight - 2:59am</b> (100%)	<b>(100%)</b>	<b>(100%)</b>
<b>Serious Injury Crashes</b>	<b>15</b>	<b>Noon - 2:59pm</b> (27%)	<b>Monday • Saturday</b> (40%)	<b>February • January</b> (26%)



### House District 17 Speed-Related Crashes

Interstate Crashes                      Non-interstate Crashes  
 ● Fatal                                      ● Fatal  
 ● Serious Injury                          ● Serious Injury

The blue gradient represents the density of all speed-related crashes.

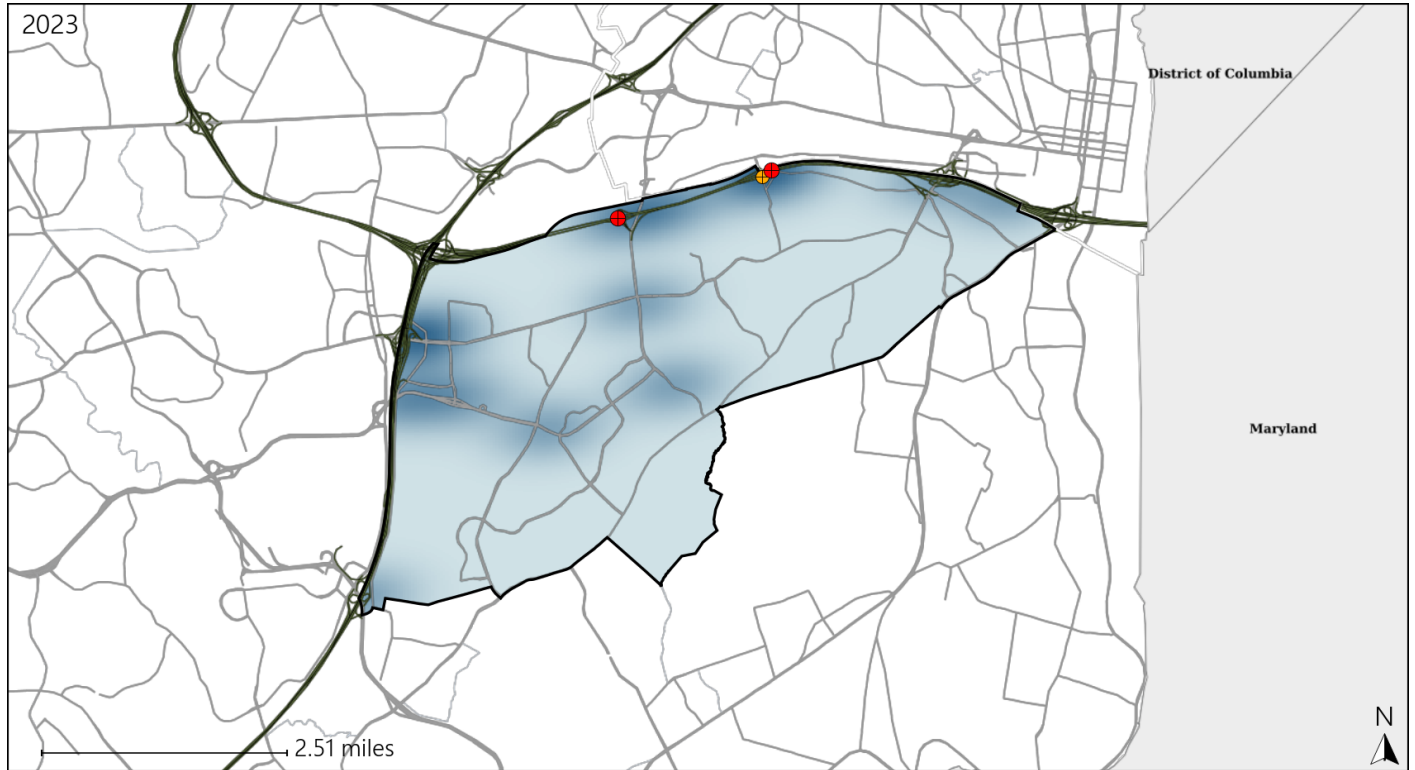


Available Crash Data - Calendar Year (CY)	CY 2020	CY 2021	CY 2022	CY 2023
Total Crashes	701	857	973	1109
Fatal Crashes	6	7	10	5
Injury Crashes	178	255	270	311
Speed-Related Fatal Crashes	3	2	7	2
Percent of Speed-Related Fatal Crashes to Total Fatal Crashes	50%	29%	70%	40%
Speed-Related Injury Crashes	59	112	97	102
Percent of Speed-Related Injury Crashes to Total Injury Crashes	33%	44%	36%	33%

# Virginia House District 17 Unrestrained Crash Statistics

Report Generated May, 2024

	Count	Highest Time Period(s)	Highest Day(s)	Highest Month(s)
<b>Fatal Crashes</b>	<b>2</b>	<b>3:00am - 5:59am</b>	<b>Saturday • Tuesday</b>	<b>March • September</b>
<b>Unrestrained Fatalities</b>	<b>2</b>	<b>Midnight - 2:59am</b> (100%)	<b>(100%)</b>	<b>(100%)</b>
<b>Serious Injury Crashes</b>	<b>1</b>	<b>6:00pm - 8:59pm</b> (100%)	<b>Saturday</b> (100%)	<b>March</b> (100%)



## House District 17 Unrestrained-Related Crashes

Interstate Crashes

Non-interstate Crashes

- Fatal
- Serious Injury

- Fatal
- Serious Injury

The blue gradient represents the density of all unrestrained-related crashes.

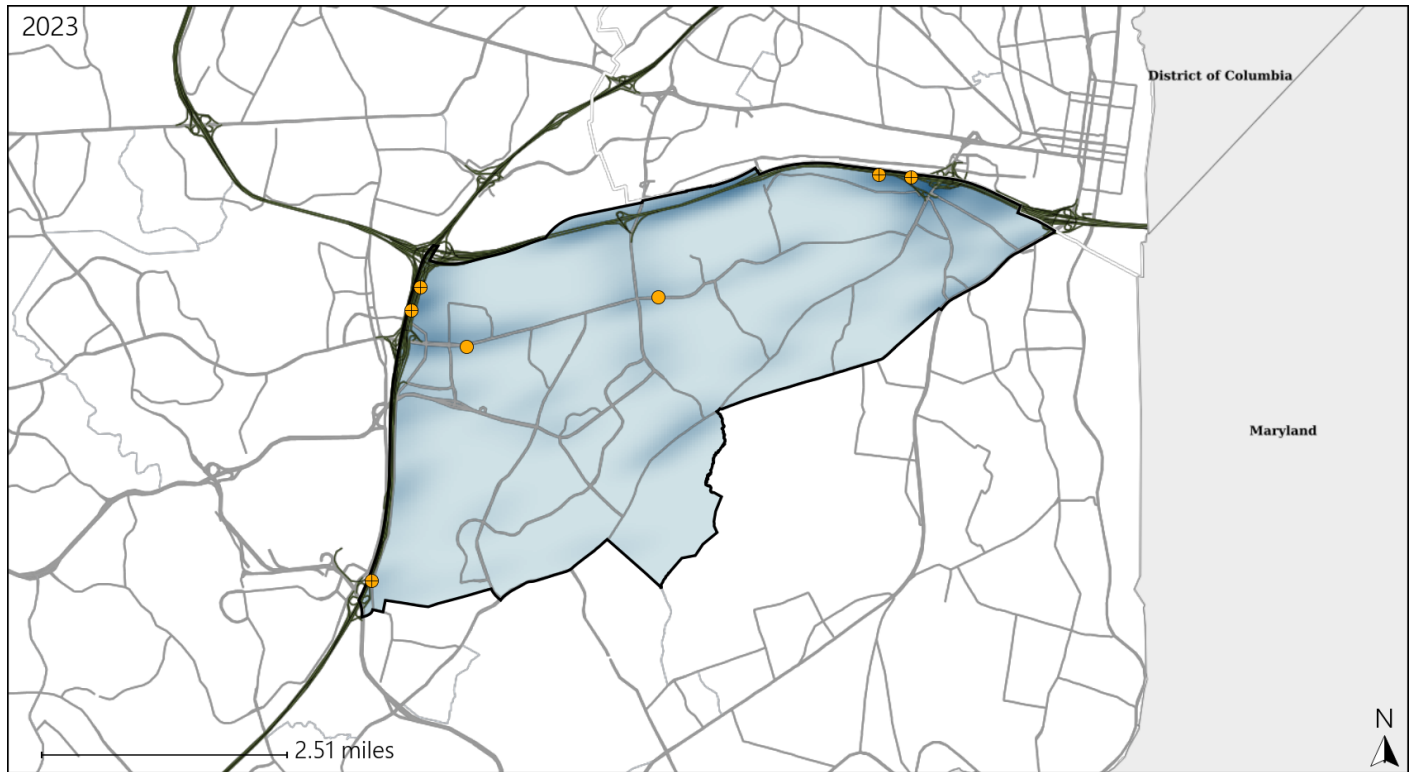


Available Crash Data - Calendar Year (CY)	CY 2020	CY 2021	CY 2022	CY 2023
<b>Total Crashes</b>	<b>701</b>	<b>857</b>	<b>973</b>	<b>1109</b>
<b>Fatalities</b>	<b>6</b>	<b>7</b>	<b>11</b>	<b>6</b>
<b>Injuries</b>	<b>259</b>	<b>417</b>	<b>407</b>	<b>500</b>
<b>Unrestrained Fatalities</b>	<b>2</b>	<b>3</b>	<b>4</b>	<b>2</b>
<b>Percent of Unrestrained Fatalities to Total Fatalities</b>	<b>33%</b>	<b>43%</b>	<b>36%</b>	<b>33%</b>
<b>Unrestrained Injuries</b>	<b>11</b>	<b>19</b>	<b>12</b>	<b>13</b>
<b>Percent of Unrestrained Injuries to Total Injuries</b>	<b>4%</b>	<b>5%</b>	<b>3%</b>	<b>3%</b>

# Virginia House District 17 Distracted Driving Crash Statistics

Report Generated May, 2024

	Count	Highest Time Period(s)	Highest Day(s)	Highest Month(s)
<b>Fatal Crashes</b>	0	-	-	-
<b>Resulting Fatalities</b>	0	-	-	-
<b>Serious Injury Crashes</b>	7	3:00pm - 5:59pm 6:00am - 8:59am (58%)	Thursday (43%)	September (29%)



## House District 17 Distracted Driving-Related Crashes

- |                    |                        |
|--------------------|------------------------|
| Interstate Crashes | Non-interstate Crashes |
| ● Fatal            | ● Fatal                |
| ⊕ Serious Injury   | ● Serious Injury       |

The blue gradient represents the density of all distracted driving-related crashes.



Available Crash Data - Calendar Year (CY)	CY 2020	CY 2021	CY 2022	CY 2023
Total Crashes	701	857	973	1109
Fatal Crashes	6	7	10	5
Injury Crashes	178	255	270	311
Distracted Driving-Related Fatal Crashes	0	0	1	0
Percent of Distracted Driving-Related Fatal Crashes to Total Fatal Crashes	0%	0%	10%	0%
Distracted Driving-Related Injury Crashes	37	44	46	75
Percent of Distracted Driving-Related Injury Crashes to Total Injury Crashes	21%	17%	17%	24%